

Mitchell Freeway Extension: Burns Beach Road to Hester Avenue

Works Update

Week commencing 1 February 2016

Freeway alignment

Location	Activity	Traffic Impacts	Timing
Between Burns Beach Road and Hester Avenue (eastern and western sides)	Earthworks to establish ground levels: <ul style="list-style-type: none">» Excavation, crushing/screening and removal of material» Placing, spreading and compacting material	» Trucks accessing site via Burns Beach Road and Connolly Drive/Neerabup Road roundabout	Ongoing until mid-2016 Monday to Saturday, 7am to 7pm
	Installation of drainage: <ul style="list-style-type: none">» Excavating, compacting and backfilling trenches» Installing drainage pipes	Nil	Ongoing until mid-2016 Monday to Saturday, 7am to 7pm
Between Burns Beach Road and Clydebank Crescent and Capitol Turn and Hemmings Close (western side)	Construction of noise walls <ul style="list-style-type: none">» Excavation and compaction of material and» Concrete pours» Laying limestone blocks	Nil	Ongoing until late April 2016 Monday to Saturday, 7am to 7pm
Between Neerabup Extension and Clarkson Station (eastern side)	Realignment of fencing adjacent rail line <ul style="list-style-type: none">» Early morning works will be required	Nil	Mid February, 1am to 4am

**While every effort is made to ensure accuracy of information presented in this update, the details are subject to change.*

Page 1



Australian Government



BUILDING OUR FUTURE

Contact us

Call 1800 883 402

Email MFEenquiries@cpbcon.com.au

www www.mainroads.wa.gov.au

Week commencing 1 February 2016

Freeway On & Off-Ramps

Location	Activity	Traffic Impacts	Timing
Between ramps and rail line (both sides)	Earthworks to establish ground levels: » Excavating, importing, spreading and compacting material	» Speed limit reduced to 60km/h along on-ramp and 70km/h along off-ramp » Trucks accessing site via ramps » Machinery intermittently crossing walkway to Clarkson Station	Ongoing to late February Monday to Saturday, 7am to 7pm
Between off-ramp and Currambine Station car park (western verge)	Construction of Principal Shared Path (PSP): » Removal of vegetation » Deviation of existing PSP through car park » Removing material	» Speed limit reduced along off-ramp » Pedestrians and cyclists detoured through Currambine Station Car Park	From mid-2017 Monday to Saturday, 7am to 7pm
Western side of Currambine Station	Removal of cover over walkway to Currambine Station	» Walkway closed to pedestrians and cyclists for short periods	Mid February 2016 Monday to Saturday, 7am to 7pm

**While every effort is made to ensure accuracy of information presented in this update, the details are subject to change.*

Page 2



Australian Government



BUILDING OUR FUTURE

Contact us

Call 1800 883 402

Email MFEenquiries@cpbcon.com.au

www.mainroads.wa.gov.au

Week commencing 1 February 2016

Burns Beach Road

Location	Activity	Traffic Impacts	Timing
Between freeway on and off-ramps	Construction of bridge footings: <ul style="list-style-type: none">» removing material» concrete pours	<ul style="list-style-type: none">» Speed limit reduced to 60km/h» Footpath closed and detoured	Ongoing to March 2016 Monday to Saturday, 7am to 7pm

Neerabup Road

Location	Activity	Traffic Impacts	Timing
Between Ladera Drive and rail line	Construction of shared bus/pedestrian underpass: <ul style="list-style-type: none">» Excavation, crushing/screening and removal of material	<ul style="list-style-type: none">» Trucks access site via Connolly Drive/Neerabup Road roundabout	Ongoing until mid-February 2016 Monday to Saturday, 7am to 7pm

**While every effort is made to ensure accuracy of information presented in this update, the details are subject to change.*

Page 3



Australian Government



BUILDING OUR FUTURE

Contact us

Call 1800 883 402

Email MFEenquiries@cpbcon.com.au

www.mainroads.wa.gov.au

Week commencing 1 February 2016

Hester Avenue

Location	Activity	Traffic Impacts	Timing
Southern verge between Ridgewood Boulevard and Hidden Valley Retreat	Installation of drainage: » Excavating, compacting and backfilling trenches » Installing drainage pipes	» Speed limit reduced to 40km/h	Ongoing until mid-February 2016 Monday to Saturday, 7am to 7pm
Northern verge between Hidden Valley Retreat and rail line	Installation of deep drainage: » Excavating, compacting and backfilling trenches » Installing drainage pipes	» Speed limit reduced to 40km/h » Traffic stopped in both directions intermittently	10 February to mid-March 2016 Monday to Saturday, 7am to 7pm
Western side of bridge	Temporary works to support existing bridge: » Installing steel sheet piles » Removing material	» Speed limit reduced to 40km/h	Ongoing to mid-February 2016 Monday to Saturday, 7am to 7pm
Northern verge between Quarry Access Road and bridge	Excavation for new bridge footings and abutments: » Removing material	» Speed limit reduced to 40km/h	Ongoing until mid-February 2016 Monday to Saturday, 7am to 7pm
	Earthworks to establish ground levels: » Importing, spreading and compacting material	» Speed limit reduced to 40km/h	Ongoing until May 2016 Monday to Saturday, 7am to 7pm
Northern verge between Quarry Access Road and Wanneroo Road	Installation of pedestrian/fauna underpass: » Concrete pours » Lifting precast concrete culverts with a crane	» Speed limit reduced to 40km/h	Ongoing to late February 2016 Monday to Saturday, 7am to 7pm

**While every effort is made to ensure accuracy of information presented in this update, the details are subject to change.*

Page 4



Australian Government



BUILDING OUR FUTURE

Contact us

Call 1800 883 402

Email MFEenquiries@cpbcon.com.au

www.mainroads.wa.gov.au

Week commencing 1 February 2016

Wanneroo Road

Location	Activity	Traffic Impacts	Timing
Between 10 th Light Horse Trail and Hall Road	Installation of drainage: » Excavating, compacting and backfilling trenches » Installing drainage pipes	» Speed limit reduced to 70km/h	Ongoing until late February 2016 Monday to Saturday, 7am to 7pm
	Construction of new Wanneroo Road alignment: » Importing, spreading and compacting road base material	» Speed limit reduced to 70km/h » Trucks accessing site via Wanneroo Road	Ongoing until May 2016 Monday to Saturday, 7am to 7pm
	Earthworks to establish ground levels: » Importing, spreading and compacting sand/limestone material » Material will be from the Neerabup Road extension worksite	» Speed limit reduced to 70km/h	Ongoing until late March 2016 Monday to Saturday, 7am to 7pm
North and south of new Flynn Drive/Wanneroo Road/Neerabup Road intersection	Installation of limestone retaining walls » Removing material and pouring concrete » Laying limestone blocks	» Speed limit reduced to 70km/h	Ongoing until late February 2016 Monday to Saturday, 7am to 7pm
Intersection with Neerabup Road extension	Sewer protection works: » Removing material to expose sewer main » Installing protection pipes » Backfilling over sewer main	» Speed limit reduced to 70km/h	Early February Monday to Saturday, 7am to 7pm

**While every effort is made to ensure accuracy of information presented in this update, the details are subject to change.*

Page 5



Australian Government



BUILDING OUR FUTURE

Contact us

Call 1800 883 402

Email MFEenquiries@cpbcon.com.au

www.mainroads.wa.gov.au

Week commencing 1 February 2016

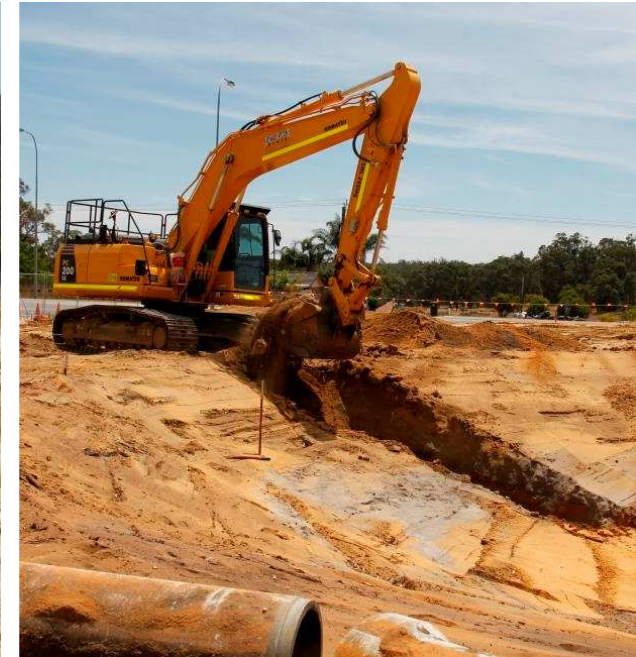
Median between Hall Road and Menchetti Road	Construction of temporary road pavement » Asphalting	» Single lane closure in each direction » Speed limit reduced to 40km/h	Ongoing until mid-February Monday to Saturday, 7am to 7pm
---------------------------------------------	---------------------------------------------------------	----------------------------------------------------------------------------	--------------------------------------------------------------



Install sheet piling to support the existing Hester Avenue bridge during construction.



Looking north from Kinross - Major earthworks will continue across the project site until mid-year.



Installation of underground drainage is underway across the project site.

**While every effort is made to ensure accuracy of information presented in this update, the details are subject to change.*

Page 6



Australian Government



BUILDING OUR FUTURE

Contact us

Call 1800 883 402

Email MFEenquiries@cpbcon.com.au

www.mainroads.wa.gov.au