

EARLY MORNING WORKS

Clarkson Station

February 9 - 12 2016

From Tuesday 9 to Friday 12 February 2016

work will be undertaken from **midnight to 4am** to realign fencing on the eastern side of the Joondalup Train Line near Clarkson Station.

Due to the close proximity to the rail line, this work can only be completed safely and without disruption to commuters outside of train operation.

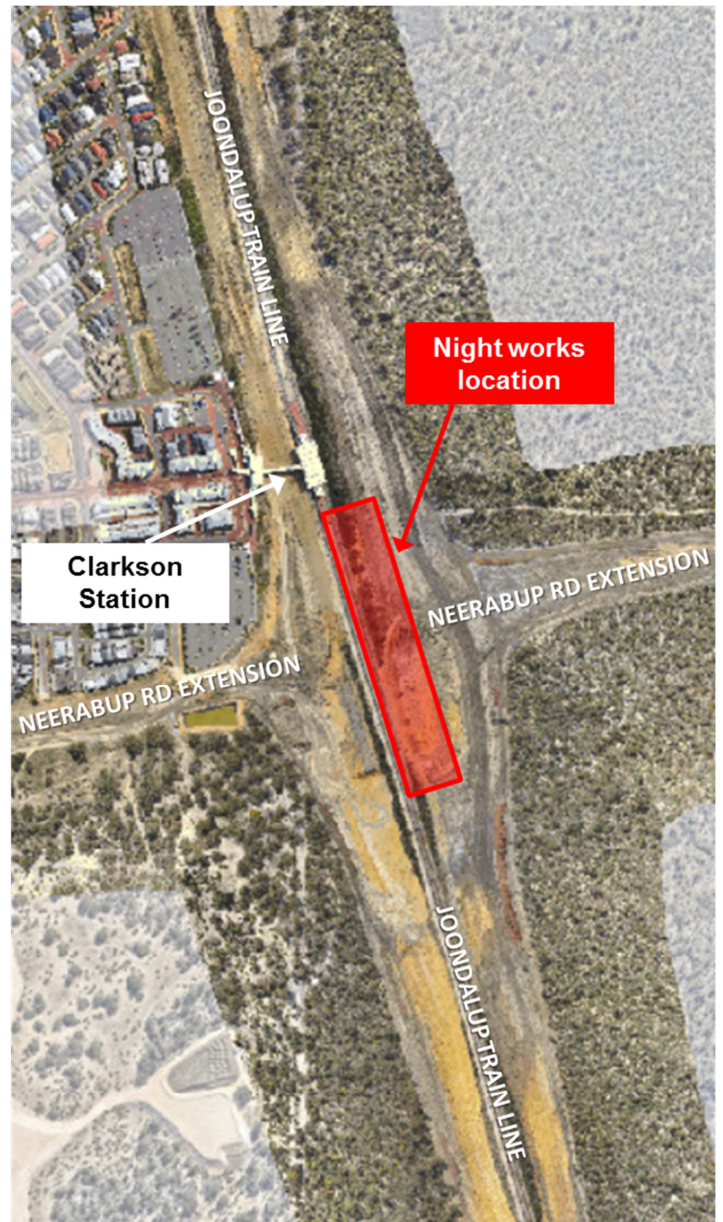
Disruption and noise impacts on the local community will be minimised as much as possible.

WORK ACTIVITIES

A generator, electric post hole digger, lighting towers and light vehicles will be used to realign the fencing.

CONTACT US

Please call 1800 883 402 with any questions you may have.



Australian Government



Reference: MFE-CORR-0040

BUILDING OUR FUTURE