

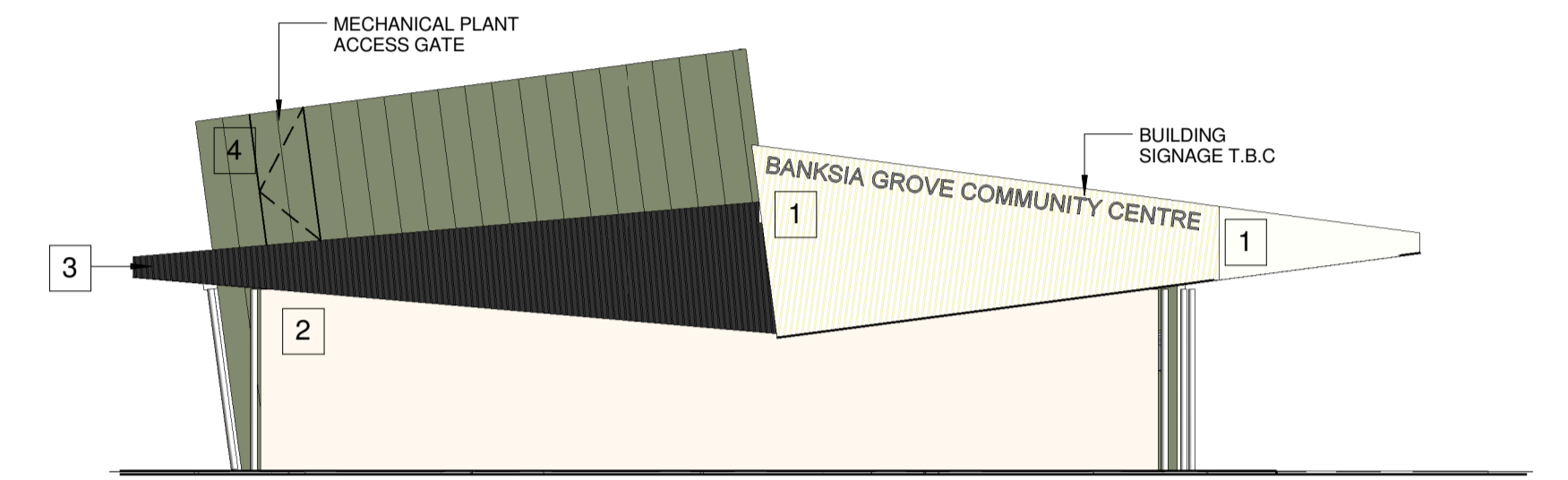
**LEGEND**

**NOTES**

- \* - ALL WALLS TO BE 92mm STUD FRAMED WALLS (LIGHT GAUGE STEEL) LINED GENERALLY WITH 13mm IMPACTCHECK PLASTERBOARD.
- \* - TRUSSES TO BE MADE OF LIGHT GAUGE STEEL.
- \* - CEILINGS TO BE LINED GENERALLY WITH 13mm PLASTERBOARD.
- \* - MULTIPURPOSE HALL CEILING TO BE LINED WITH ACOUSTIC CEILING.

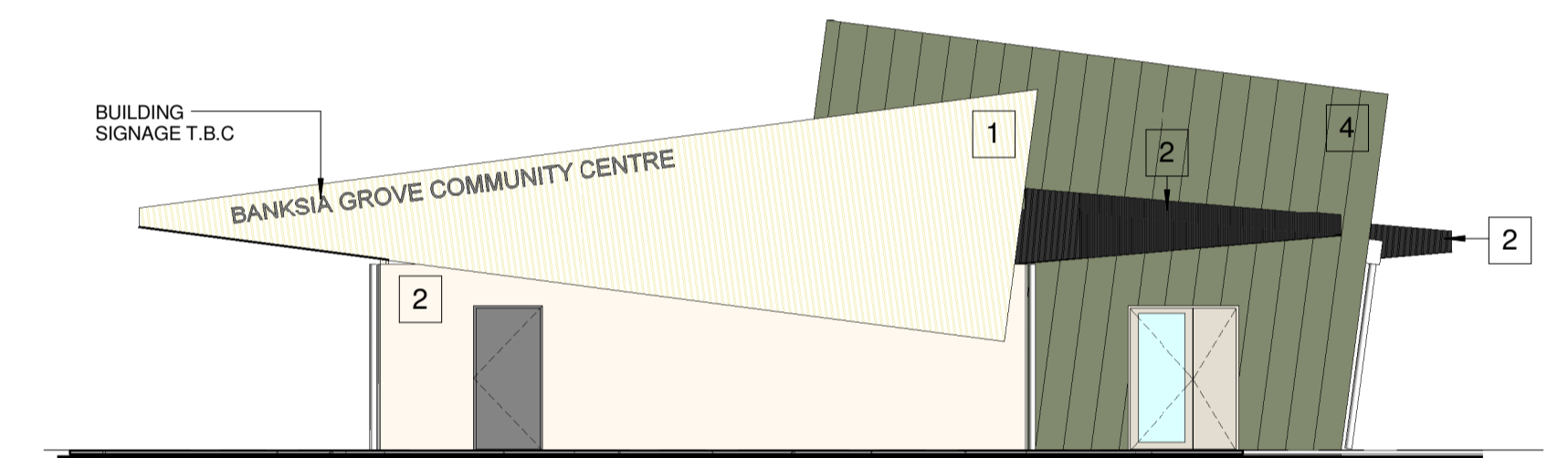
**LEGEND**

- 1 COLORBOND WHITEHAVEN SPANDEK ROOF SHEETING
- 2 RENDERED BRICKWORK
- 3 COLORBOND MONUMENT SPANDEK ROOF SHEETING
- 4 SCYON AXON WALL CLADDING
- 5 POLYCARBONATE TRANSLUCENT SHEETING (ROOF LIGHT) - GRECA PROFILE



**EAST ELEVATION**

1:100

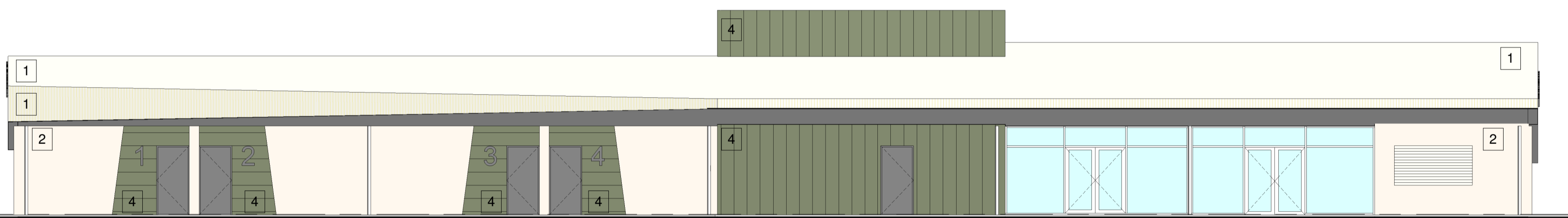


**WEST ELEVATION**

1:100

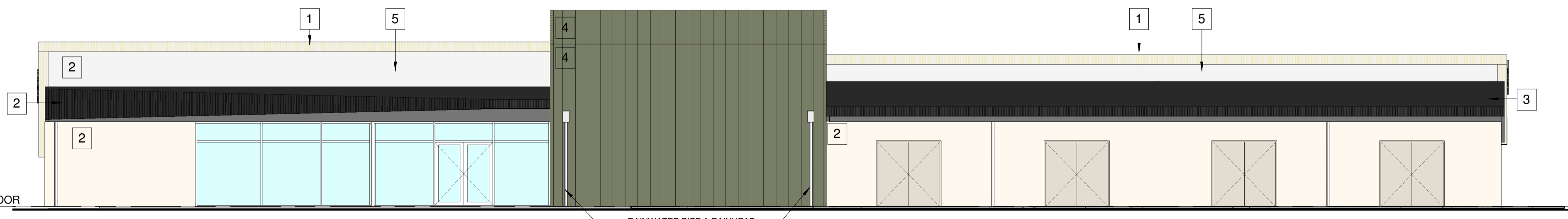
**1-100 Ground Floor Sketch design**

1:100



**NORTH ELEVATION**

1:100



**SOUTH ELEVATION**

1:100



**NORTH**

DESIGNED: PAUL EDWARDS	CHECKED: PAUL EDWARDS
ARCHITECT DIRECTOR	ARCHITECT DIRECTOR
DRAWN: ANDREW DE BOER	APPROVED: PAUL EDWARDS
DRAFTSPERSON	ARCHITECT DIRECTOR

**site** **Site Architecture Studio**  
 Suite 11, 90 King Street Perth 6000 WA  
 T 08 9226 5661 | F 08 9226 5662  
 mail@sitearchitecture.com.au  
 www.sitearchitecture.com.au

**CITY OF WANNEROO**  
**INFRASTRUCTURE**

**BANKSIA GROVE CLUBROOM**  
 BANKSIA GROVE SPORTS GROUNDS CHANGEROOM FACILITY  
 2 GRANDIS BOULEVARD BANKSIA GROVE WA 6019

SKETCH DESIGN FLOOR PLAN & ELEVATIONS

NO.	REVISION	BY	DATE	AUTH	NO.	REVISION	BY	DATE	AUTH	NO.	SCALE: 1:100	APPROVED:	DRAWN/DESIGNED:	APPROVED:	TRIM FILE NO.	DRAWING NO.	SHEET	REVISION	ORIGINAL DRG. SIZE
1	ISSUED TO CONSULTANTS	PE	25.11.15								1:100		SITE ARCHITECTURE STUDIO		14481	3189-SK01 - B	A1		
2	ISSUED FOR SCHEMATIC DESIGN REPORT	PE	01.12.15										RESONER	MANAGER INFRASTRUCTURE PROJECTS	PR-2819				
3	SCHEMATIC DESIGN REPORT UPDATE	PE	07.12.15										APPROVED:	APPROVED:					
													MANAGER PROGRAM SERVICES	DIRECTOR INFRASTRUCTURE					