

Mitchell Freeway Extension: Burns Beach Road to Hester Avenue

Works Update

Week commencing 15 February 2016

Construction works will generally be conducted, Monday to Saturday between 7am and 7pm. Some works outside of these hours may be required and we will notify local residents accordingly.

Change traffic conditions may be in place outside of these times and road users are asked to follow all traffic management in place.

Freeway alignment

Location	Activity	Traffic Impacts	Timing
Between Burns Beach Road and Hester Avenue (eastern and western sides)	Earthworks to establish design levels: <ul style="list-style-type: none">» Excavation, crushing/screening and removal of material» Placing, spreading and compacting material	» Trucks accessing site via Burns Beach Road and Connolly Drive/Neerabup Road roundabout	Ongoing until mid-2016
	Installation of drainage: <ul style="list-style-type: none">» Excavating, compacting and backfilling trenches» Installing drainage pipes	Nil	Ongoing until mid-2016
Between Burns Beach Road and Clydebank Crescent and Capitol Turn and Hemmings Close (western side)	Construction of noise walls <ul style="list-style-type: none">» Excavation and compaction of material» Concrete pours» Laying limestone blocks	Nil	Ongoing until late April 2016

**While every effort is made to ensure accuracy of information presented in this update, the details are subject to change.*

Page 1



Australian Government



BUILDING OUR FUTURE

Contact us

Call 1800 883 402

Email MFEenquiries@cpbcon.com.au

www www.mainroads.wa.gov.au

Week commencing 15 February 2016

Freeway On & Off-Ramps

Location	Activity	Traffic Impacts	Timing
Between ramps and rail line (both sides)	Earthworks to establish ground levels: <ul style="list-style-type: none">» Excavating, importing, spreading and compacting material	<ul style="list-style-type: none">» Speed limit reduced to 60km/h» Trucks accessing site via ramps» Machinery intermittently crossing walkway to Currambine Station	Ongoing to mid-March 2016
Between off-ramp and Currambine Station car park (western verge)	Construction of Principal Shared Path (PSP): <ul style="list-style-type: none">» Service location» Removal of vegetation» Removing material	<ul style="list-style-type: none">» Speed limit reduced to 60km/h» Pedestrians and cyclists detoured through Currambine Station Car Park	Ongoing until late March 2016

**While every effort is made to ensure accuracy of information presented in this update, the details are subject to change.*

Page 2



Australian Government



BUILDING OUR FUTURE

Contact us

Call 1800 883 402

Email MFEenquiries@cpbcon.com.au

www.mainroads.wa.gov.au

Week commencing 15 February 2016

Burns Beach Road

Location	Activity	Traffic Impacts	Timing
Between freeway on and off-ramps	Construction of bridge footings » Steel fixing and concrete pours	» Speed limit reduced to 60km/h » Footpath closed and detoured	Ongoing to mid-2016

Neerabup Road

Location	Activity	Traffic Impacts	Timing
Between Ladera Drive and rail line	Construction of shared bus/pedestrian underpass: » Concrete pours and steel fixing » Backfilling with material	» Trucks access site via Connolly Drive/Neerabup Road roundabout	Ongoing until mid- 2016

Hester Avenue

Location	Activity	Traffic Impacts	Timing
Southern verge between Ridgewood Boulevard and Hidden Valley Retreat	Pavement and PSP construction: » Importing, spreading and compacting material.	» Speed limit reduced to 40km/h	From mid February 2016 until late March 2016
Northern verge between	Delivery of material	» Trucks accessing site via	Ongoing until late February 2016

**While every effort is made to ensure accuracy of information presented in this update, the details are subject to change.*

Page 3



Australian Government



BUILDING OUR FUTURE

Contact us

Call 1800 883 402

Email MFEenquiries@cpbcon.com.au

www.mainroads.wa.gov.au

Week commencing 15 February 2016

Ridgewood Boulevard and bridge		<p>Hester Avenue.</p> <ul style="list-style-type: none"> » Traffic stopped in both directions intermittently » Speed limit reduced to 40km/h 	
Northern verge between Quarry Access Road and Wanneroo Road	<p>Installation of pedestrian/fauna underpass:</p> <ul style="list-style-type: none"> » Concrete pours » Lifting precast concrete culverts with a crane 	<ul style="list-style-type: none"> » Speed limit reduced to 40km/h 	Ongoing to late February 2016
	<p>Earthworks to establish design levels:</p> <ul style="list-style-type: none"> » Importing, spreading and compacting material 		Ongoing until May 2016
	<p>Installation of drainage</p> <ul style="list-style-type: none"> » Excavating, compacting and backfilling trenches » Installing drainage pipes 		Ongoing until late February 2016
Southern verge between Quarry Access Road and Hidden Valley Retreat	<p>Hester Avenue bridge construction:</p> <ul style="list-style-type: none"> » Removing material » Steel fixing and concrete pours 	<ul style="list-style-type: none"> » Speed limit reduced to 40km/h 	Ongoing until late- 2016
	<p>Installation of pedestrian underpass:</p> <ul style="list-style-type: none"> » Concrete pours and steel fixing » Lifting precast concrete culverts with a crane 		Ongoing until late-February 2016
	<p>Installation of retaining walls around power transmission poles:</p> <ul style="list-style-type: none"> » Lifting precast concrete panels with a crane 		23-26 February 2016

**While every effort is made to ensure accuracy of information presented in this update, the details are subject to change.*

Page 4



Australian Government



BUILDING OUR FUTURE

Contact us

Call 1800 883 402

Email MFEenquiries@cpbcon.com.au

www.mainroads.wa.gov.au

Week commencing 15 February 2016

Wanneroo Road

Location	Activity	Traffic Impacts	Timing
Between 10 th Light Horse Trail and Hall Road	Installation of drainage: » Excavating, compacting and backfilling trenches » Installing drainage pipes	» Speed limit reduced to 70km/h	Ongoing until late February 2016
	Construction of new Wanneroo Road alignment: » Importing, spreading and compacting road base material	» Speed limit reduced to 70km/h » Trucks accessing site via Wanneroo Road	Ongoing until May 2016
	Earthworks to establish design levels: » Importing, spreading and compacting sand/limestone material » Material will be from the Neerabup Road extension worksite	» Speed limit reduced to 70km/h	Ongoing until late March 2016
North and south of new Flynn Drive/Wanneroo Road/Neerabup Road intersection	Installation of limestone retaining walls » Removing material and pouring concrete » Laying limestone blocks	» Speed limit reduced to 70km/h	Ongoing until early March 2016
Intersection with Neerabup Road extension	Sewer protection works: » Removing material to expose sewer main » Installing protection pipes » Backfilling over sewer main	» Speed limit reduced to 70km/h	Late February 2016

**While every effort is made to ensure accuracy of information presented in this update, the details are subject to change.*

Page 5



Australian Government



BUILDING OUR FUTURE

Contact us

Call 1800 883 402

Email MFEenquiries@cpbcon.com.au

www.mainroads.wa.gov.au

Week commencing 15 February 2016

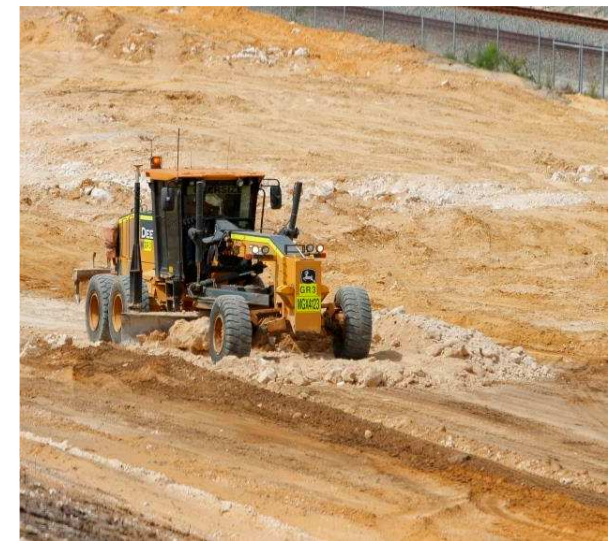
Median between Hall Road and Menchetti Road	Construction of temporary road pavement and realignment of traffic » Asphaltting and line marking	» Single lane closure in each direction » Traffic stopped intermittently » Speed limit reduced to 40km/h	Ongoing until early March 2016 Monday to Saturday, 7am to 7pm
North of existing Flynn Drive intersection	Installation of temporary traffic barriers: » Night works will be required	» Speed limit reduced to 40km/h » Traffic stopped in both directions intermittently	Late February 2016



Noise wall construction underway adjacent Liberty Drive, Clarkson.



Works to protect the water main near Kinross continue.



Earthworks to establish design levels are ongoing across the project.

**While every effort is made to ensure accuracy of information presented in this update, the details are subject to change.*

Page 6



Australian Government



BUILDING OUR FUTURE

Contact us

Call 1800 883 402

Email MFEenquiries@cpbcon.com.au

www.mainroads.wa.gov.au