

Week commencing 28 March 2016

The project will be closed from Friday 25 to Tuesday 30 March 2016 (inclusive) for the Easter period.

Freeway alignment

Location	Activity	Traffic Impacts	Timing
Between Burns Beach Road and Hester Avenue (eastern and western sides)	Earthworks to establish design levels: <ul style="list-style-type: none"> » Excavation, crushing/screening and importing and removing material » Placing, spreading and compacting material 	» Trucks accessing site via Burns Beach Road and Connolly Drive/Neerabup Road roundabout	Ongoing until mid-2016
	Installation of drainage: <ul style="list-style-type: none"> » Excavating, compacting and backfilling trenches » Installing drainage pipes 	Nil	Ongoing until mid-2016
Between Burns Beach Road and Clydebank Crescent and Capitol Turn and Hemmings Close (western side)	Construction of noise walls <ul style="list-style-type: none"> » Excavating and compacting material » Concrete pours » Laying limestone blocks 	Nil	Ongoing until late May 2016

**While every effort is made to ensure accuracy of information presented in this update, the details are subject to change.*

Page 1



Australian Government



BUILDING OUR FUTURE

Contact us

Call 1800 883 402

Email MFEenquiries@cpbcon.com.au

www.mainroads.wa.gov.au

Freeway On & Off-Ramps at Burns Beach Road

Location	Activity	Traffic Impacts	Timing
Between ramps and rail line (both sides)	Earthworks to establish ground levels: <ul style="list-style-type: none"> » Excavating and removing material » Importing, spreading and compacting material 	<ul style="list-style-type: none"> » Speed limit reduced to 60 km/h » Trucks accessing site via ramps » Machinery intermittently crossing walkway at access to Currambine Station. » Speed limit reduced to 60 km/h 	Ongoing to mid-2016
	Installation of drainage: <ul style="list-style-type: none"> » Excavating, compacting and backfilling trenches » Installing drainage pipes 		Ongoing until late April 2016
	Construction of pedestrian underpasses to Currambine Station: <ul style="list-style-type: none"> » Excavating and removal material for the footings 		Ongoing until mid-2016
Between off-ramp and Currambine Station car park (western verge)	Construction of Principal Shared Path (PSP): <ul style="list-style-type: none"> » Removing vegetation and material 	<ul style="list-style-type: none"> » Speed limit reduced to 60 km/h » Footpath closed and detoured » Closure of a small section of the Currambine Station car park 	Ongoing until late 2016
Western side of Currambine Station	Removal of cover over walkway to Currambine Station	Walkway closed to pedestrians and cyclists for short periods	Thursday 31 March and Friday 1 April 2016

**While every effort is made to ensure accuracy of information presented in this update, the details are subject to change.*



Burns Beach Road

Location	Activity	Traffic Impacts	Timing
Between freeway on and off-ramps	Burns Beach Road bridges construction: <ul style="list-style-type: none"> » Steel fixing and concrete pours » Excavation of bridge pier footings 	<ul style="list-style-type: none"> » Speed limit reduced to 60 km/h » Footpath closed and detoured 	Ongoing to mid-2016

Neerabup Road

Location	Activity	Traffic Impacts	Timing
Between Connolly Drive and rail line	Construction of shared bus/pedestrian underpass: <ul style="list-style-type: none"> » Concrete pours and steel fixing » Importing and backfilling with material 	<ul style="list-style-type: none"> » Trucks access site via Connolly Drive/Neerabup Road roundabout 	Ongoing until mid-2016
	Removal of material		Ongoing until May 2016
	Installation of drainage: <ul style="list-style-type: none"> » Excavating, compacting and backfilling trenches » Installing drainage pipes 		Ongoing until late April 2016
	Neerabup Road bridge construction: <ul style="list-style-type: none"> » Excavation of bridge footings » Steel fixing and concrete pours 		Ongoing until late 2016

*While every effort is made to ensure accuracy of information presented in this update, the details are subject to change.



Hester Avenue

Location	Activity	Traffic Impacts	Timing
Southern verge between Ridgewood Boulevard and Hidden Valley Retreat	Road pavement and PSP construction: » Importing, spreading and compacting material	<ul style="list-style-type: none"> » Speed limit reduced to 40 km/h » Trucks accessing site via Hester Avenue » Speed limit reduced to 40 km/h 	Ongoing until mid-April 2016
Southern verge between Quarry Access Road and Hidden Valley Retreat	Hester Avenue bridge construction: » Excavating material » Steel fixing and concrete pours » Installing precast panels		Ongoing until late 2016
	Installation of pedestrian underpass: » Backfilling over structure		Ongoing until early April 2016
Northern verge between Quarry Access Road and Wanneroo Road	Earthworks to establish design levels: » Importing, spreading and compacting material		Ongoing until May 2016
Various locations along Hester Avenue	Installation of drainage: » Excavating, compacting and backfilling trenches » Installing drainage pipes		Ongoing until mid-April 2016

**While every effort is made to ensure accuracy of information presented in this update, the details are subject to change.*



Wanneroo Road

Location	Activity	Traffic Impacts	Timing
South of new Flynn Drive/Wanneroo Road/Neerabup Road intersection	Installation of limestone retaining walls <ul style="list-style-type: none"> » Removing material and pouring concrete » Laying limestone blocks » Backfill of retaining wall 	<ul style="list-style-type: none"> » Speed limit reduced to 60 km/h 	Ongoing until late April 2016
New Flynn Drive alignment	Site establishment: <ul style="list-style-type: none"> » Removing kerb and stone pitching 	<ul style="list-style-type: none"> » Nil 	Ongoing
Intersection with Neerabup Road extension	Sewer protection works: <ul style="list-style-type: none"> » Removing material to expose sewer main » Installing protection pipes » Backfilling over sewer main 	<ul style="list-style-type: none"> » Speed limit reduced to 60 km/h 	Ongoing until late March 2016
Between 10 th Light Horse Trail and Hall Road	Construction of new Wanneroo Road alignment: <ul style="list-style-type: none"> » Importing, spreading and compacting material 	<ul style="list-style-type: none"> » Speed limit reduced to 60 km/h » Trucks accessing site via Wanneroo Road 	Ongoing until May 2016
	Installation of fauna underpasses: <ul style="list-style-type: none"> » Removing material » Concrete pours and steel fixing » Lifting precast concrete culverts with a crane 	<ul style="list-style-type: none"> » Speed limit reduced to 60 km/h 	Ongoing until late April 2016
Between Flynn Drive and Joondalup Drive	Service location works	<ul style="list-style-type: none"> » Speed limit reduced to 60 km/h 	Ongoing until early April 2016

**While every effort is made to ensure accuracy of information presented in this update, the details are subject to change.*



Week commencing 28 March 2016

Working Hours

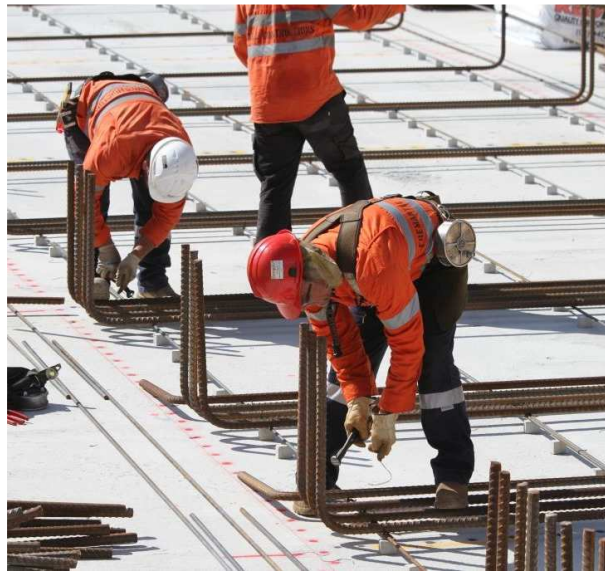
Construction works will generally be conducted, Monday to Saturday between 7am and 7pm. Site maintenance, such as refuelling and dust suppression, is undertaken outside of these times. Some construction works will be required outside of these general hours and notification of such works will be provided to local residents where necessary.

Traffic Changes

Change traffic conditions are in place throughout the project area, including speed restrictions and lanes closures. Signage will be place to through the works and we ask road user to follow all traffic management in place.



Works are in full swing to install the new bridge at Hester Avenue.



Steel fixing is underway on a number of structures across the project.



Excavation of the noise wall footings are progressing in Kinross.

**While every effort is made to ensure accuracy of information presented in this update, the details are subject to change.*

