

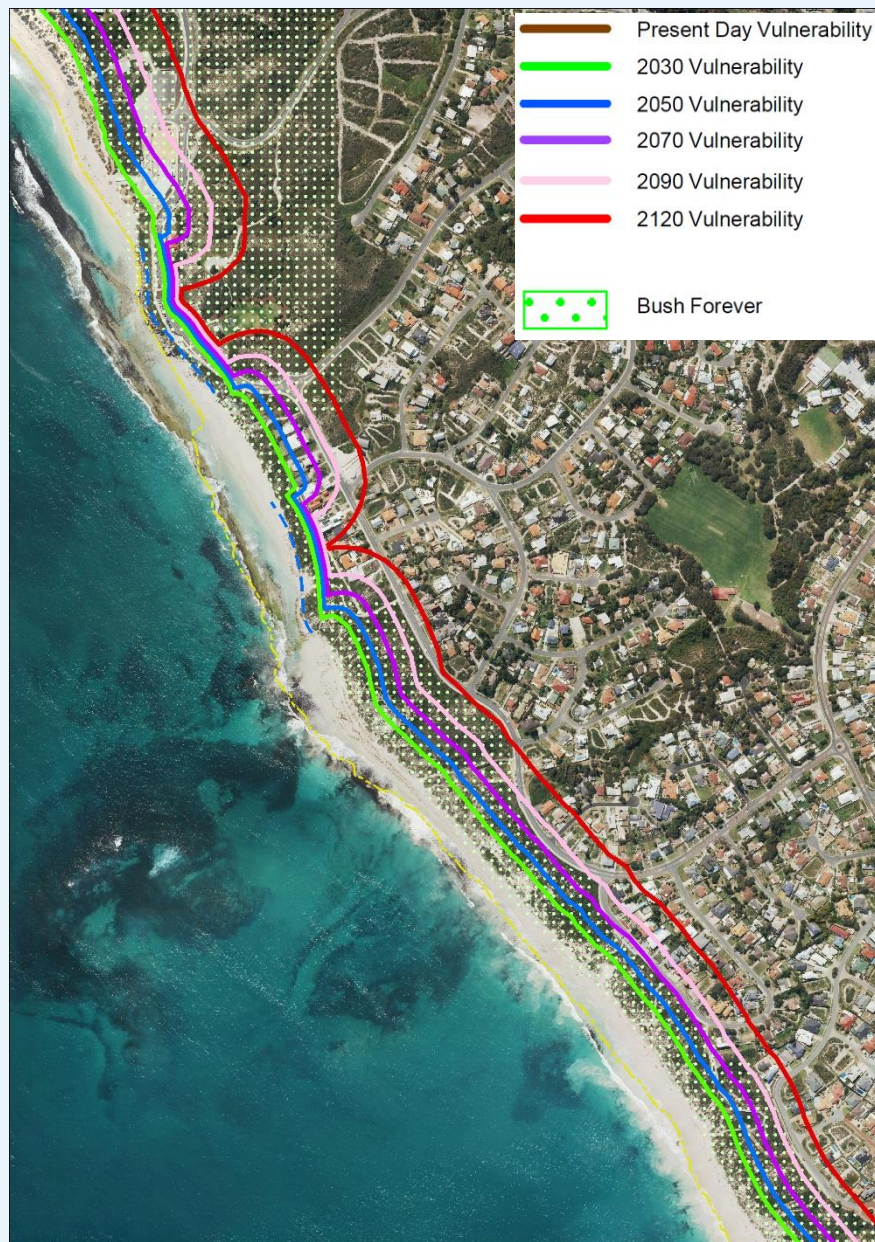
# Yanchep – Brazier Road Carpark and Residential



Image: Surf Lifesaving Australia

## What are the valuable assets in this area?

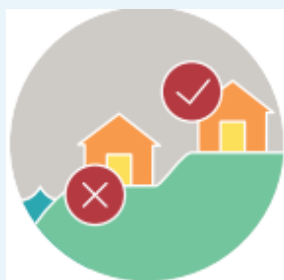
- The beach
- The dunes and their vegetation
- The roads, carpark and associated infrastructure
- Residential properties



## What action can we take now?

- Notify landowners who may be affected by present and future coastal hazards
- Implement/review planning controls to prevent additional development in coastal hazard areas (except infill)
- Undertake dune care and minor sand management to maintain the dunes as a natural buffer
- Put emergency plans and controls in place to prepare for coastal hazard events
- Monitor the shoreline to see how it is changing and better inform decision making

## What is the adaptation pathway for this area over the next 100 years?



Avoid development and manage natural assets



Managed retreat of buildings and roads when threatened



OR



Avoid additional development and intensification



Protect valuable assets while feasible (soft and/or hard protection)\*



Eventual managed retreat when protection is no longer feasible

\*Note: Hard protection structures may result in the loss of the beach in the future and increased problems on adjacent beaches