

Two Rocks – The Spot, Beach Access and Carpark



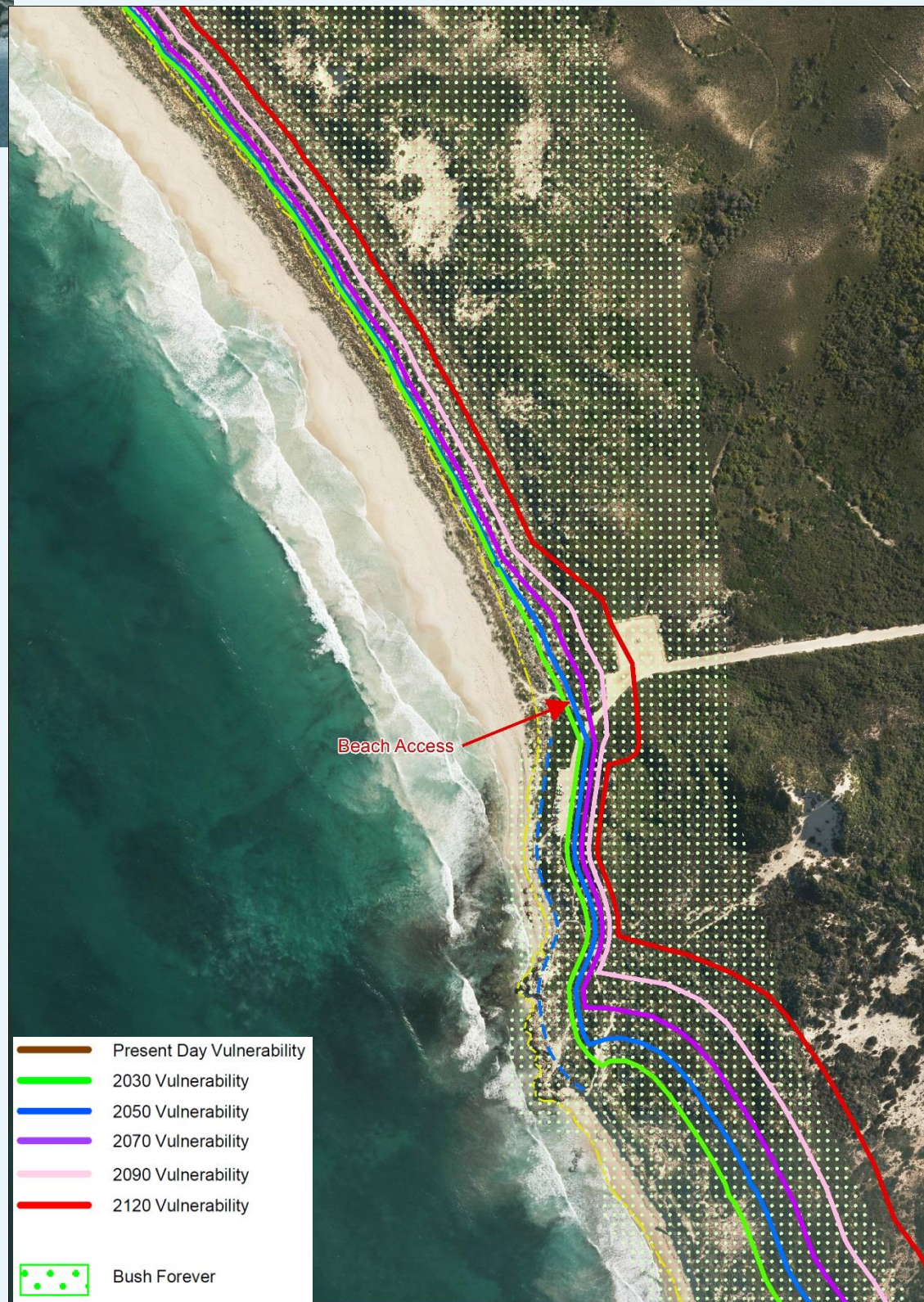
Image: Surf Lifesaving Australia

What are the valuable assets in this area?

- The beach
- The dunes and their vegetation
- The roads, carparks and associated infrastructure

What action can we take now?

- Implement/review planning controls to prevent additional development in coastal hazard areas (except infill)
- Put emergency plans and controls in place to prepare for coastal hazard events
- Monitor the shoreline to see how it is changing and better inform decision making



What is the adaptation pathway for this area over the next 100 years?



Avoid additional development and intensification



Managed retreat of roads and carparks when threatened or damaged

