

Mindarie – Priority Ecological Community

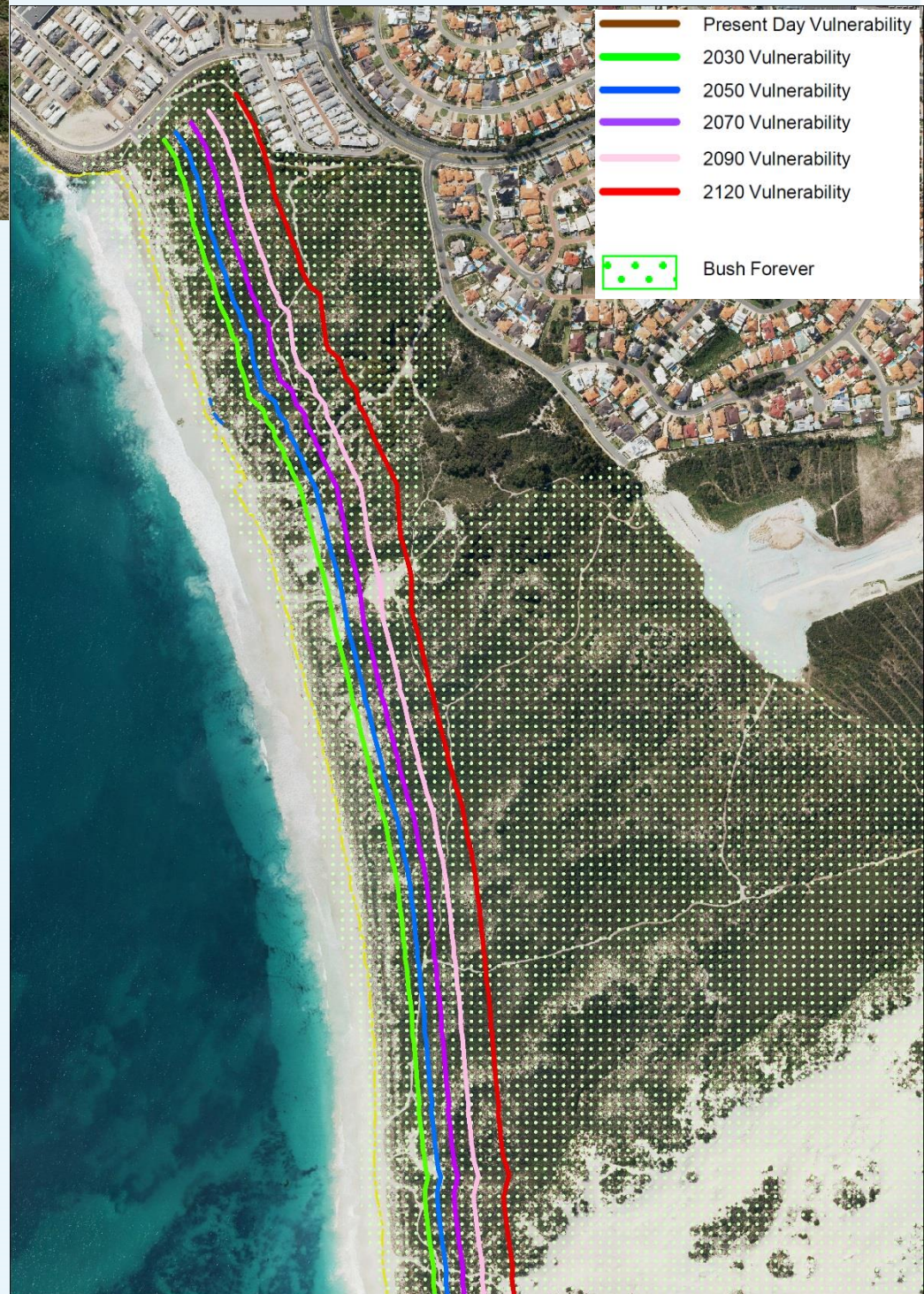


What are the valuable assets in this area?

- Priority Ecological Community
- The beach
- The dunes and their vegetation

What action can we take now?

- Review/Implement planning controls to prevent development in coastal hazard areas
- Undertake dune care and minor sand management to maintain the dunes as a natural buffer
- Monitor the shoreline to see how it is changing and better inform decision making



What is the adaptation pathway for this area over the next 100 years?



Avoid
development
and manage
natural assets

