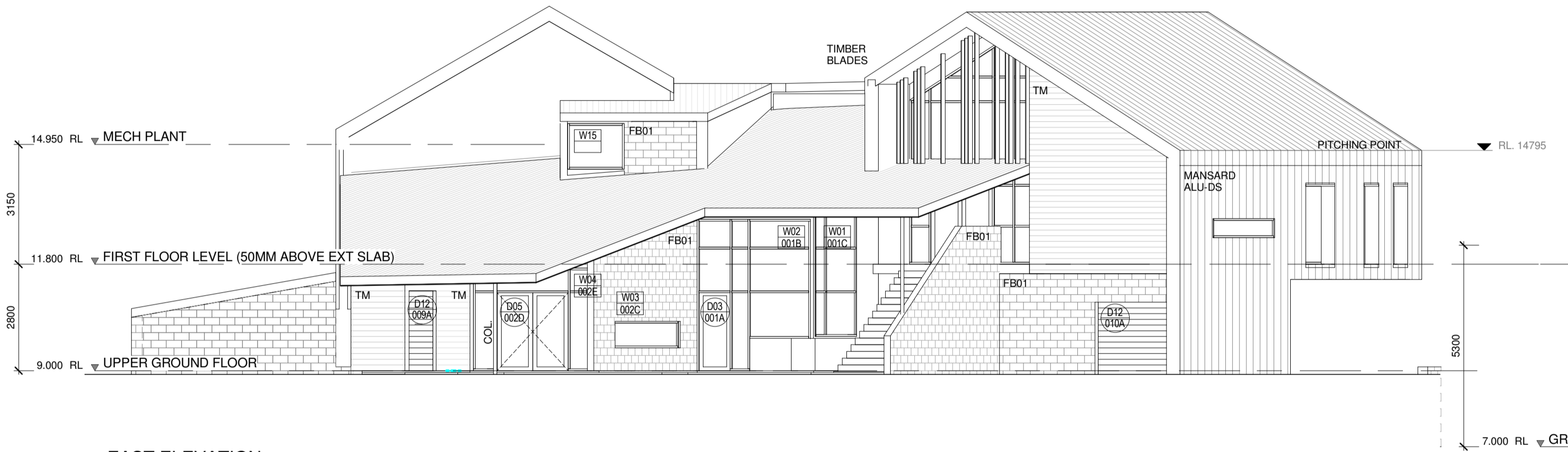




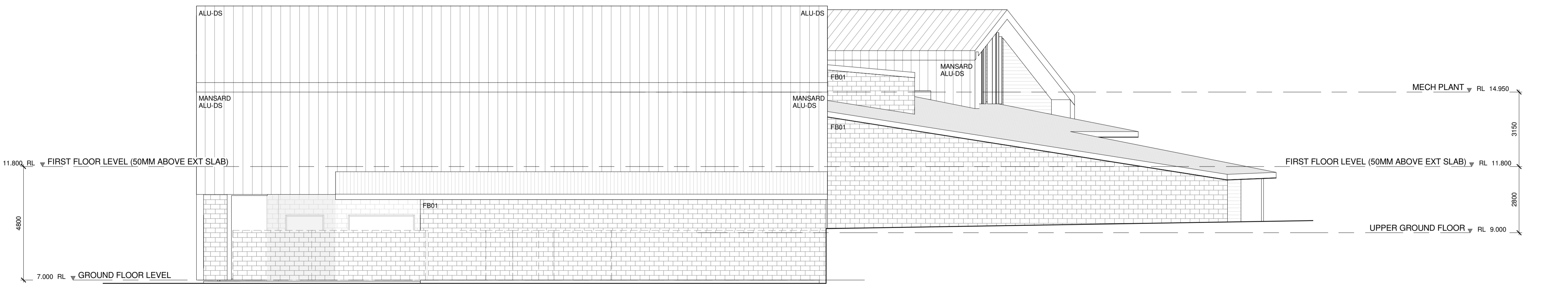
NORTH ELEVATION
1 : 100



EAST ELEVATION
1 : 100



WEST ELEVATION
1 : 100



SOUTH ELEVATION
1 : 100

- NOTES**
- BUILDER TO LOCALLY GRADE FINISHED LANDSCAPING TO ENTIRE PERIMETER OF BUILDING TO ENSURE ADEQUATE WATER RUN OFF IS ACHIEVED.
 - PROVIDE MINIMUM FALL AWAY FROM BUILDING OF 1:100 FOR STORM WATER RUN OFF TO ALL EXTERNAL PAVING.
 - ENSURE THAT ALL POINTS OF EGRESS FROM BUILDING ARE NO GREATER THAN 175mm(H) OR LESS THAN 75mm(H) FROM FINISHED LANDSCAPE LEVEL. REFER TO AS.1428 FOR DETAILS AND PROVIDE STEPS AS DETAILED BY ARCHITECT (IF REQUIRED).
 - REFER TO COLOUR SCHEDULES FOR MORE INFORMATION.
 - WHERE ONLY ONE MATERIAL/ COLOUR IS NOMINATED ON A SURFACE, ASSUME THAT MATERIAL/ COLOUR IS APPLICABLE TO THE WHOLE SURFACE.
 - ALL EXTERNAL LIGHTING FIXTURES TO BE INSTALLED @ 2150mm AFFL (CENTRE).

- LEGEND**
- ALU-DS SELECTED ALUMINIUM DOUBLE STANDING SEAM PANEL. REFER TO A6.02 FOR TYPICAL DETAIL.
 - AW AWNING SASH. REFER TO WINDOW SCHEDULE
 - NOMINATED COLORBOND FINISH
 - COL. LOCATION OF STRUCTURAL COLUMN. REFER TO STRUC. ENG. DWGS.
 - DP SELECTED 100mmØ PVC DOWNPIPE.
 - F FIXED GLAZING. REFER TO WINDOW SCHEDULE.
 - FB01 SELECTED FACEBLOCK TO MATCH EXISTING
 - NOMINATED PAINT FINISH
 - SPN SELECTED SPANDEK ROOF CLADDING PROFILE.
 - TM SELECTED FEATURE TIMBER CLADDING.
 - WL LOCATION OF WALL MOUNTED LUMINAIRE. REFER TO ELEC. ENG. DWGS FOR DETAILS.
 - VP SELECTED VITRAPANEL CLADDING. NOMINATED FINISH.

- SYMBOLS**
- D-01 DENOTES DOOR TYPE AND OPENING NUMBER. REFER TO DOOR SCHEDULE FOR DETAILS.
 - W-01 DENOTES WINDOW TYPE AND OPENING NUMBER. REFER TO WINDOW SCHEDULE FOR DETAILS.
 - RL 290.20 DENOTES PROPOSED GROUND LEVEL
 - TOW RL 290.20 DENOTES PROPOSED TOP OF WALL LEVEL

PRELIMINARY

CITY OF WANNEROO
INFRASTRUCTURE
CAPITAL WORKS

CITY OF WANNEROO - PROJECT NUMBER: PR-1121
CITY OF WANNEROO - FILE NUMBER: 2746

RECOMMENDED: [] APPROVED: []
COORDINATOR PROJECTS: [] MANAGER CLIENT: []
AUTHORIZED: [] APPROVED: []
MANAGER PROJECTS: [] DIRECTOR INFRASTRUCTURE CAPITAL WORKS: []

site Site Architecture Studio
Suite 11, 90 King Street Perth 6000 WA
T 08 9226 5661 | F 08 9226 5662
mail@sitearchitecture.com.au
www.sitearchitecture.com.au

QUINNS MINDARIE
COMMUNITY CENTRE
ALTERATIONS & ADDITIONS

LOT 211, 2 QUINNS RD, MINDARIE

ELEVATIONS

No.	REVISION	BY	DATE	AUTH	No.	REVISION	BY	DATE	AUTH	DRAWING SCALE:	DESIGNED:	CHECKED:	QUALITY ASSURANCE:
-	ISSUED TO CONSULTANTS	BM	151120							1 : 100			
A	ISSUED FOR PRELIMINARY DD	SH	151214							SCALE IN METERS			