



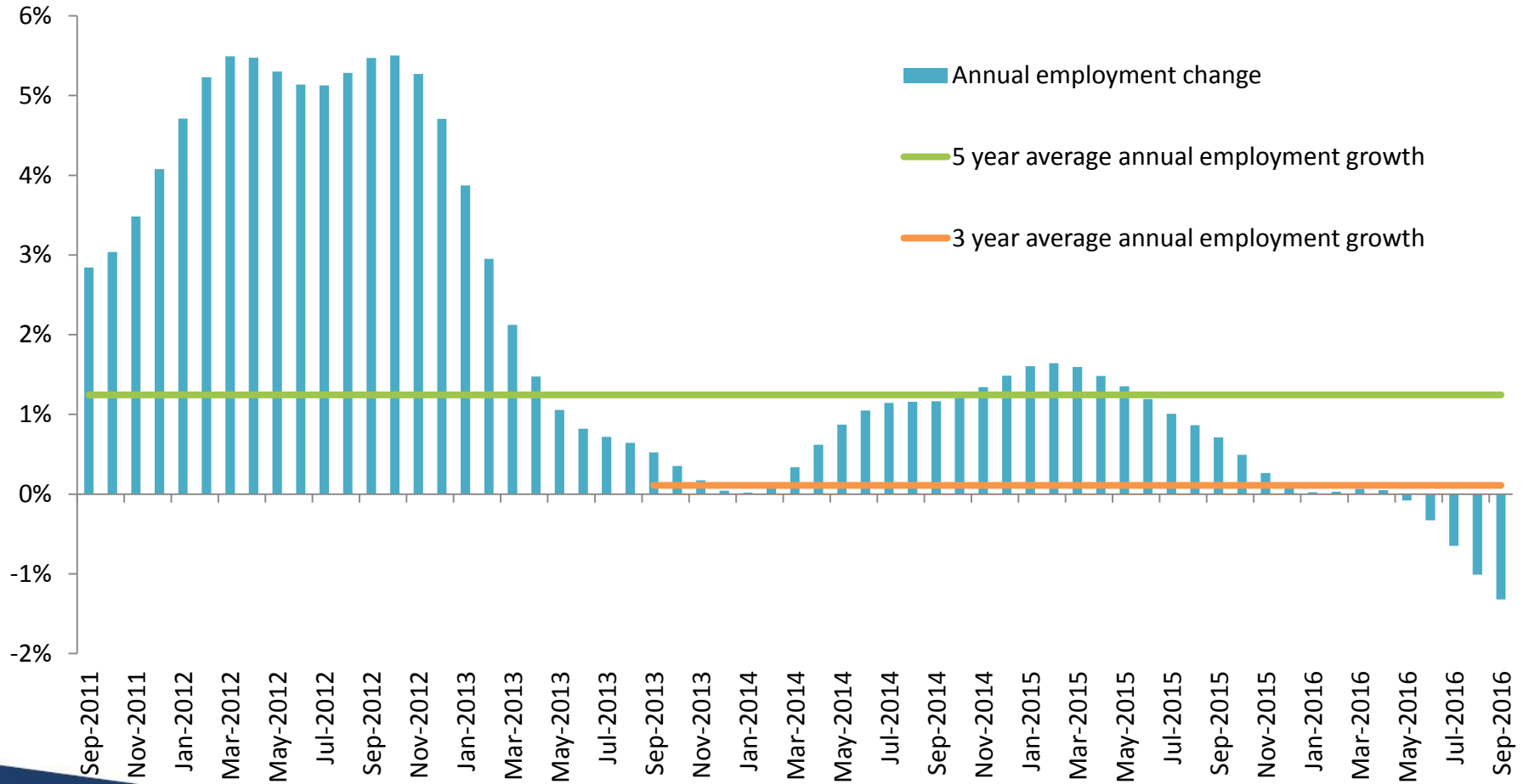
Australian Government
Department of Employment

Wanneroo Labour Market

Department of Employment

Employment growth has slowed significantly...

Western Australia, 2011-2016

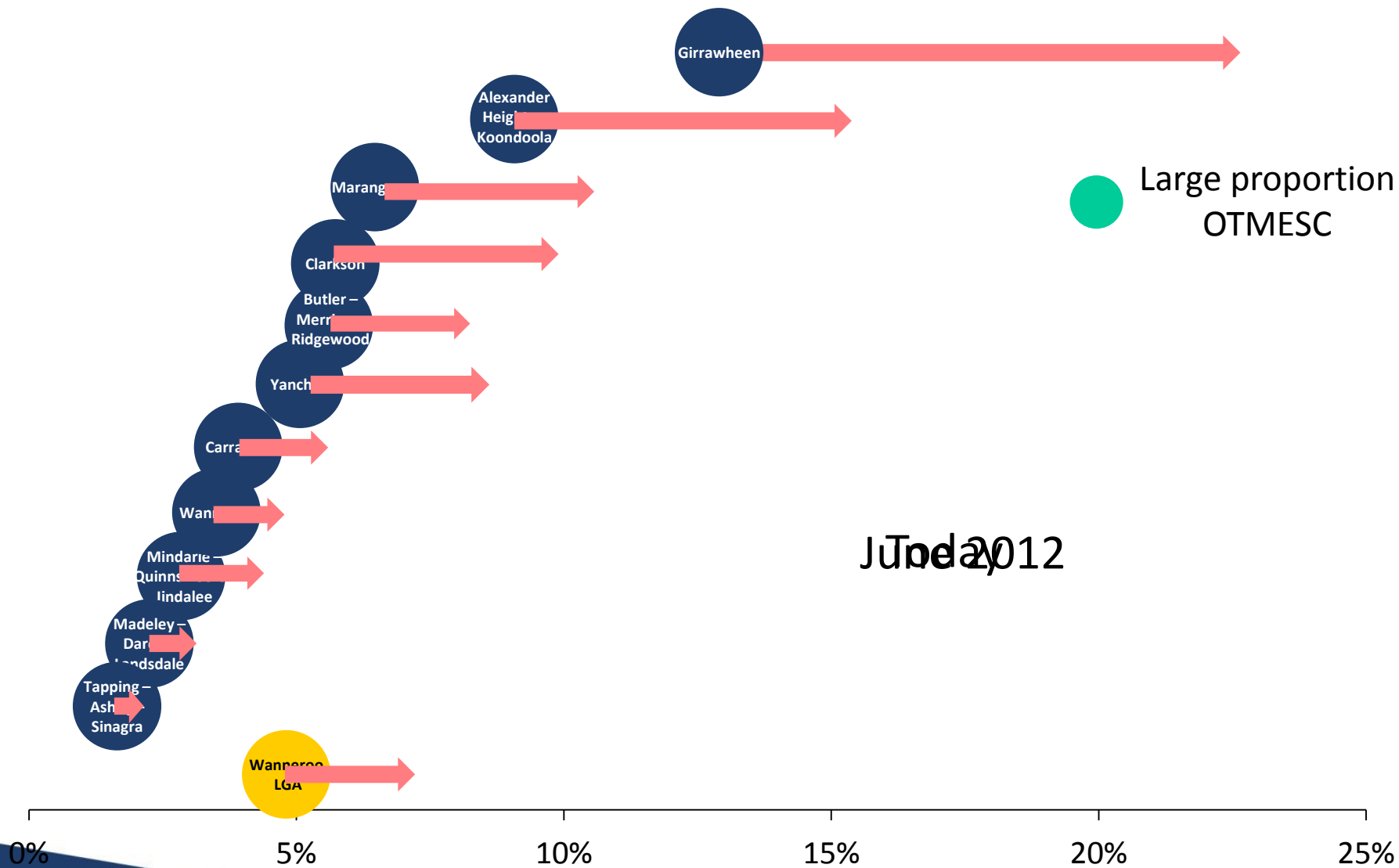


Wanneroo resident profile

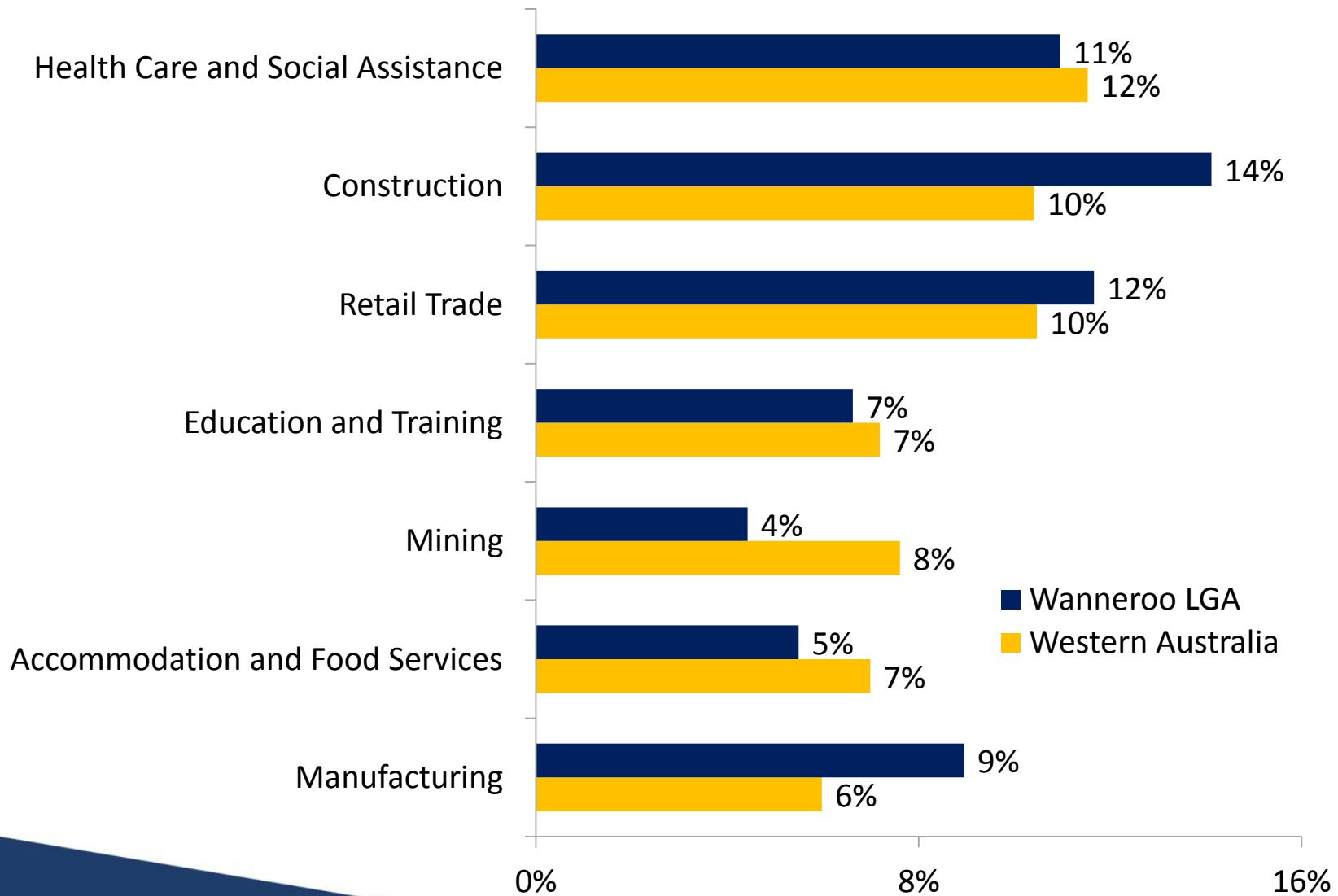
	WA	Wanneroo LGA
Unemployment rate	6.5%	8.5%
Population growth (2010 to 2015)	13%	24%
% Population aged under 19	25%	31%
Year 12 attainment (25-34 years, 2011)	70%	67%
Born in 'OTMESC' (2011)	15%	16%
% Population recently arrived migrants (last 5 years)	5.6%	6.5%

Source: ABS Census of population and housing, 2011; Department of Employment, Small Area Labour Markets, June Quarter 2016; Department of Immigration, Settlement Reporting January 2016; ABS Labour Force, October 2016 (Seasonally adjusted data); ABS Estimated Residential Population, 2013

Unemployment increasing across Wanneroo

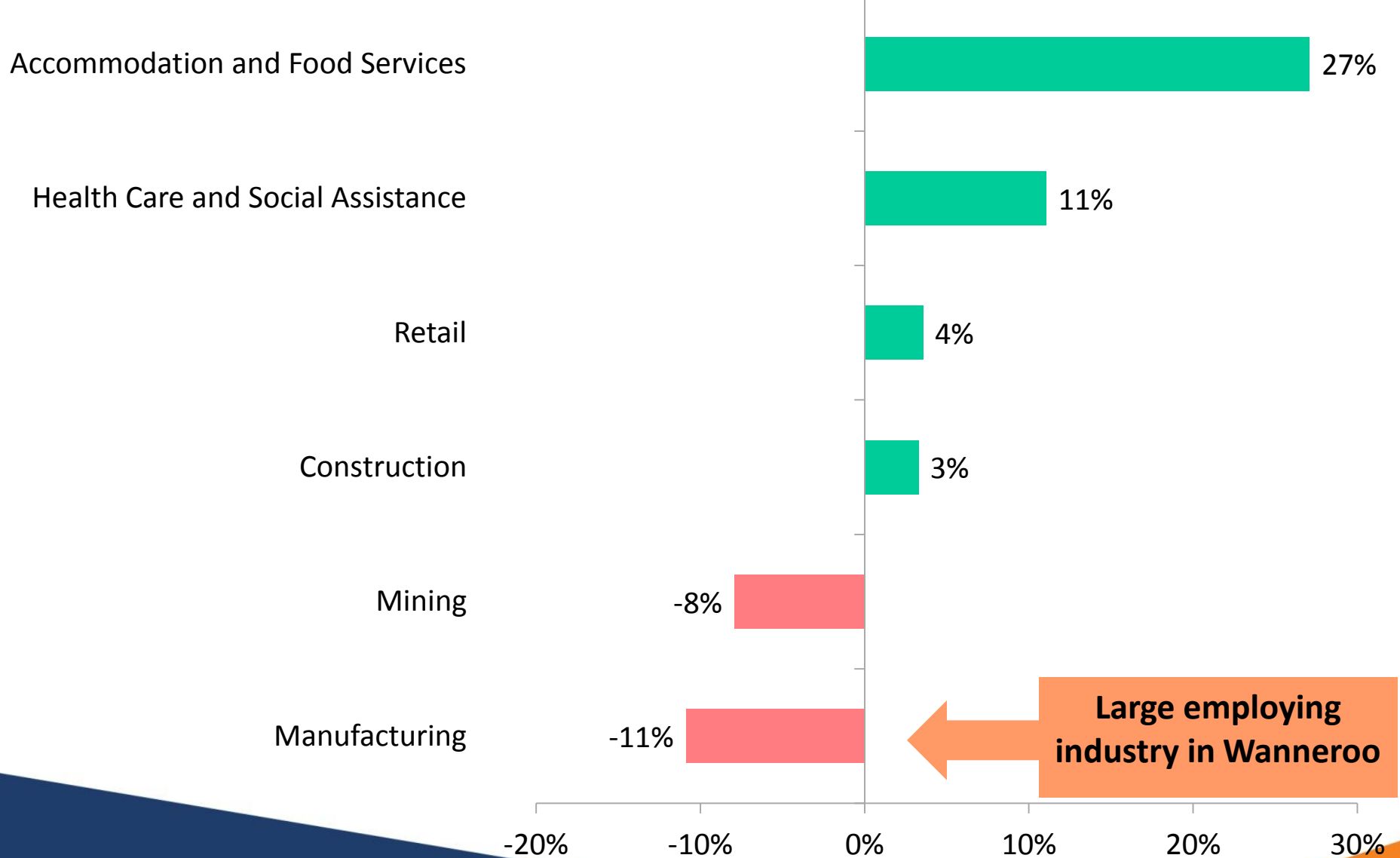


Where do residents of Wanneroo work?



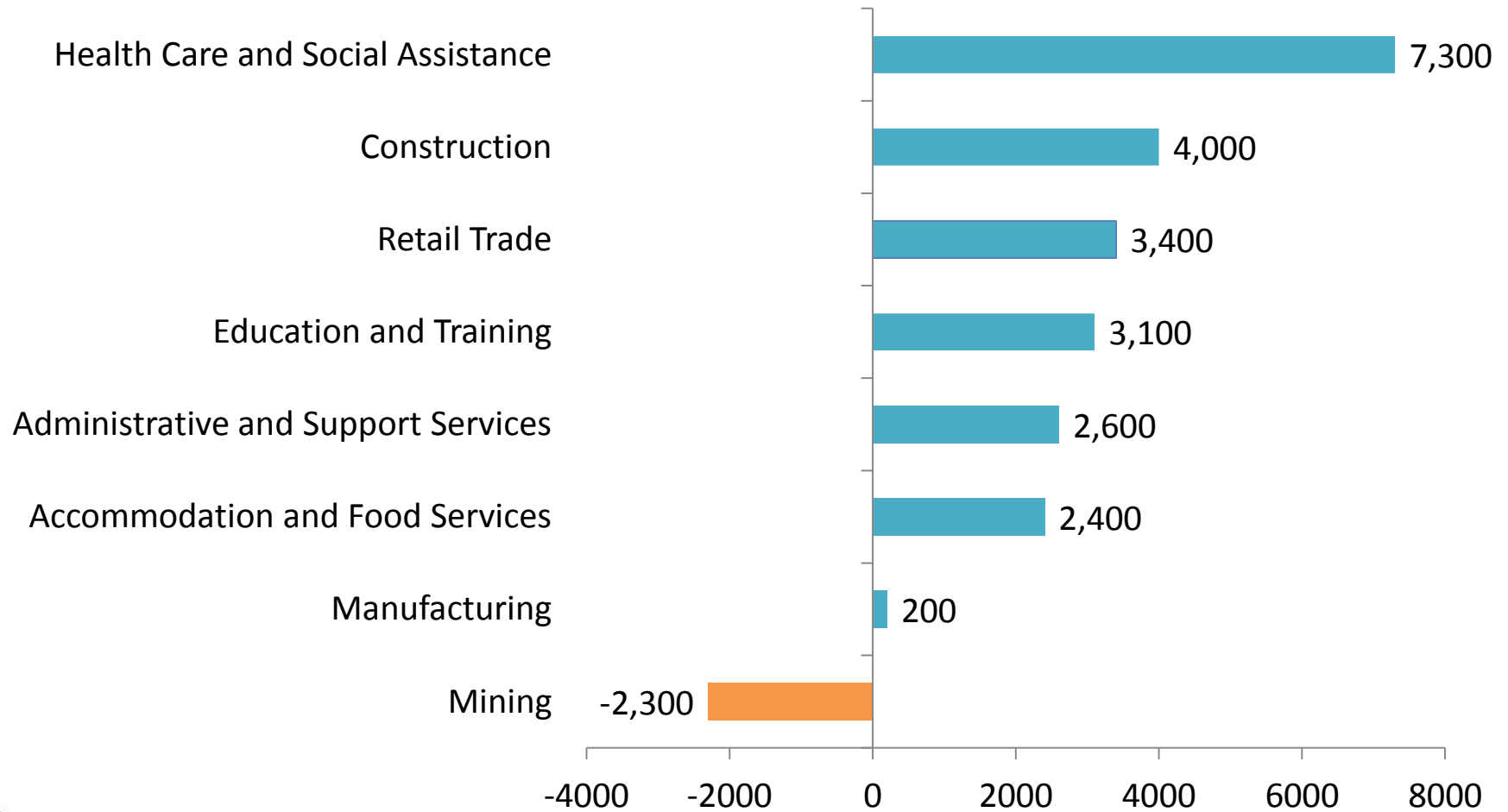
Growth in the Services sector

Over the past 3 years, WA



...which will continue into the future

Perth – North West, projections to 2020 ('000)



Employment Services

The Australian Government provides a range of programs and supports to assist people to find and keep a job. These supports include:

- employment services system **jobactive** that provides services to job seekers and works with employers to meet their needs
 - **Wage subsidies**
 - **National Work Experience Program**
 - **Work for the Dole**

In addition the Government has introduced a number of measures to support young disadvantaged job seekers including:

- **Transition to Work (TTW)**
- **Youth Jobs PATH** (prepare, trial and hire)



Australian Government

Department of Employment