

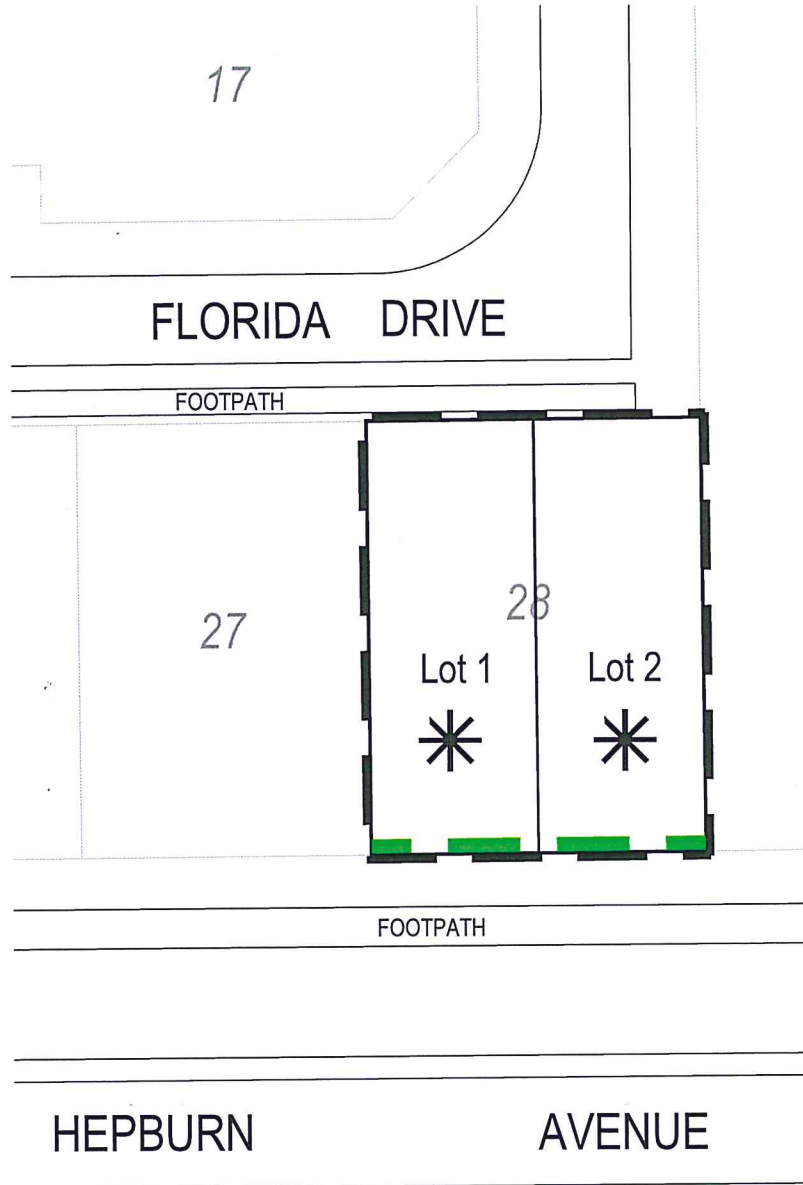
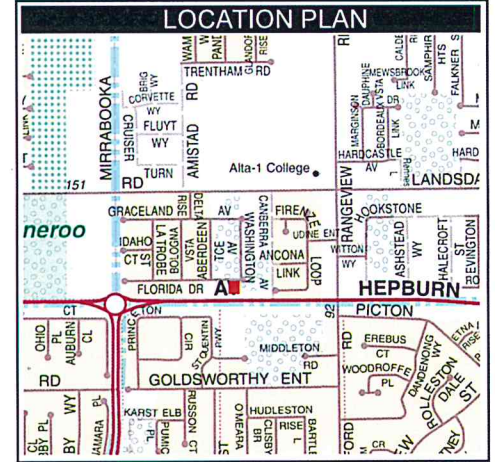
LEGEND

- LDP Boundary
- No Vehicle Access (Uniform fencing by subdivider)
- * Subject to Quiet House Design Requirements

PROVISIONS

The provisions addressed below relate to Lot 28 Florida Drive, Landsdale.

Quiet House Design measures are required for lots affected by transport noise, as shown on the plan and identified in the Acoustic Assessment Report prepared by Lloyd George Acoustics dated 18 November 2014.
 Package A is required for both lots as detailed in Attachment 1.



ENDORSEMENT

This Local Development Plan has been approved by Council under clause 52 (1)(a) of the Deemed Provisions of District Planning Scheme No. 2

Manager Planning Implementation - City of Wanneroo *[Signature]* Date *20/01/17*



NOTE:
 Pavements and footpaths shown diagrammatically only

LOCAL DEVELOPMENT PLAN No. 2 - EAST WANNEROO CELL 5

GRAY & LEWIS
 LAND USE PLANNERS
 Suite 5, 2 Hardy Street
 South Perth, WA 6151
 T (08) 9474 1722
 F (08) 9474 1172
 perth@graylewis.com.au

Package A: Noise levels within the *margin*

The following noise insulation package is designed to meet the indoor noise standards for residential developments in areas where noise levels exceed the noise *target* but are within the *limit*.

Area type	Orientation	Package A measures
Indoors		
Bedrooms	Facing road/rail corridor	<ul style="list-style-type: none"> • 6mm (minimum) laminated glazing • Fixed, casement or awning windows with seals • No external doors • Closed eaves • No vents to outside walls/eaves • Mechanical ventilation/airconditioning¹
	Side-on to corridor	<ul style="list-style-type: none"> • 6mm (minimum) laminated glazing • Closed eaves • Mechanical ventilation/airconditioning
	Away from corridor	No requirements
Living and work areas ²	Facing corridor	<ul style="list-style-type: none"> • 6mm (minimum) laminated glazing • Fixed, casement or awning windows with seals • 35mm (minimum) solid core external doors with acoustic seals³ • Sliding doors must be fitted with acoustic seals • Closed eaves • No vents to outside walls/eaves • Mechanical ventilation/airconditioning
	Side-on to corridor	<ul style="list-style-type: none"> • 6mm (minimum) laminated glazing • Closed eaves • Mechanical ventilation/airconditioning
	Away from corridor	No requirements
Other indoor areas	Any	No requirements

¹ See section on Mechanical ventilation/airconditioning for further details and requirements.

² These deemed-to-comply guidelines adopt the definitions of indoor spaces used in AS 2107-2000. A comparable description for bedrooms, living and work areas is that defined by the Building Code of Australia as a "habitable room". The Building Code of Australia may be referenced if greater clarity is needed. A living or work area can be taken to mean any "habitable room" other than a bedroom. Note that there are no noise insulation requirements for utility areas such as bathrooms. The Building Code of Australia describes these utility spaces as "non-habitable rooms".

³ Glazing panels are acceptable in external doors facing the transport corridor. However these must meet the minimum glazing requirements.