



FOR DESIGN DEVELOPMENT ONLY.
 NOT FOR CONSTRUCTION.
 THESE ARE TO BE READ IN CONJUNCTION WITH
 CONSULTANTS DRAWINGS.

DESIGNED: JULIAN SHAW <i>JS</i> 00/00/2017	CHECKED: JULIAN SHAW <i>JS</i> 00/00/2017
DRAWN: MPS ARCHITECTS 00/00/2017	APPROVED: JULIAN SHAW <i>JS</i> 00/00/2017 DIRECTOR

444 Newcastle Street
 PO Box 327 Leederville
 Western Australia 6903

T 08 9328 9888
 F 08 9328 9811
 E mps@mpsarch.com.au

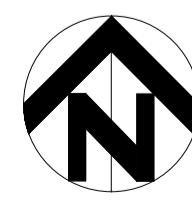
mps ARCHITECTS

architecture
 planning
 project management
 mpsarch.com.au

CITY OF WANNEROO
INFRASTRUCTURE

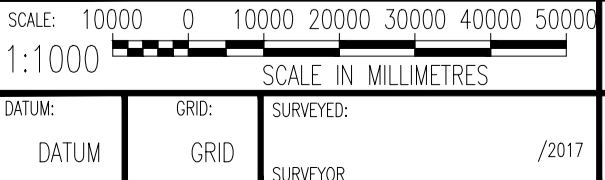
BUTLER NORTH DISTRICT
OPEN SPACE
HARDCOURT SPORTS
AMENITIES
 24 Halesworth Parade, Butler

LOCATION PLAN



No.	REVISION	BY	DATE	AUTH	No.	REVISION	BY	DATE	AUTH
A	ISSUED FOR COORDINATION	JS	22.03.2017						
B	SCALE CHANGED - CONSULTANTS COORDINATION	JS	30.03.2017						
C	ISSUED FOR PLANNING APPROVAL	JS	04.04.2017						

No.	REVISION	BY	DATE	AUTH	No.	REVISION	BY	DATE	AUTH



DRAWN/DESIGNED:
MPS ARCHITECTS

CHECKED:	APPROVED:	TRIM FILE No.
COORDINATOR BUILDING PROJECTS	MANAGER COMMUNITY FACILITIES	/2017
CHECKED:	AUTHORISED:	PROJECT No.
MANAGER INFRASTRUCTURE CAPITAL WORKS	OPERATIONS MANAGER ASSETS	/2017

CITY REFERENCE / DRAWING No. SHEET REVISION ORIGINAL Dwg. SIZE
3343-DD.01-C A1