

# Yanchep – Capricorn Groyne Carpark



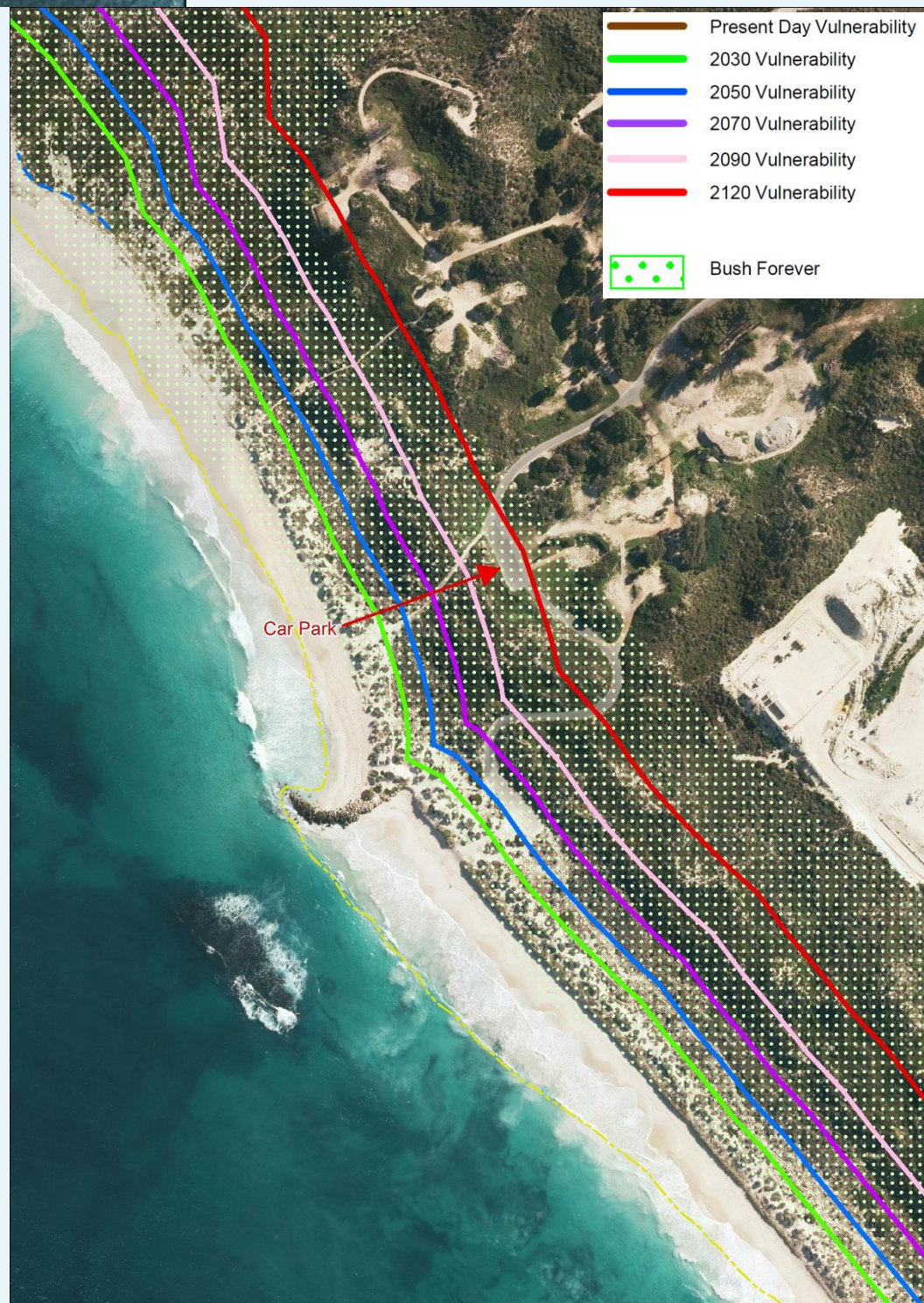
## What are the valuable assets in this area?

- The beach
- The dunes and their vegetation
- The roads, carparks and associated infrastructure

Image: Surf Lifesaving Australia

## What action can we take now?

- Notify landowners who may be affected by present and future coastal hazards
- Implement/review planning controls to prevent additional development in coastal hazard areas (except infill)
- Undertake dune care and minor sand management to maintain the dunes as a natural buffer
- Put emergency plans and controls in place to prepare for coastal hazard events
- Monitor the shoreline to see how it is changing and better inform decision making



What is the adaptation pathway for this area over the next 100 years?



Avoid additional development and intensification



Managed retreat of roads and carparks when threatened

