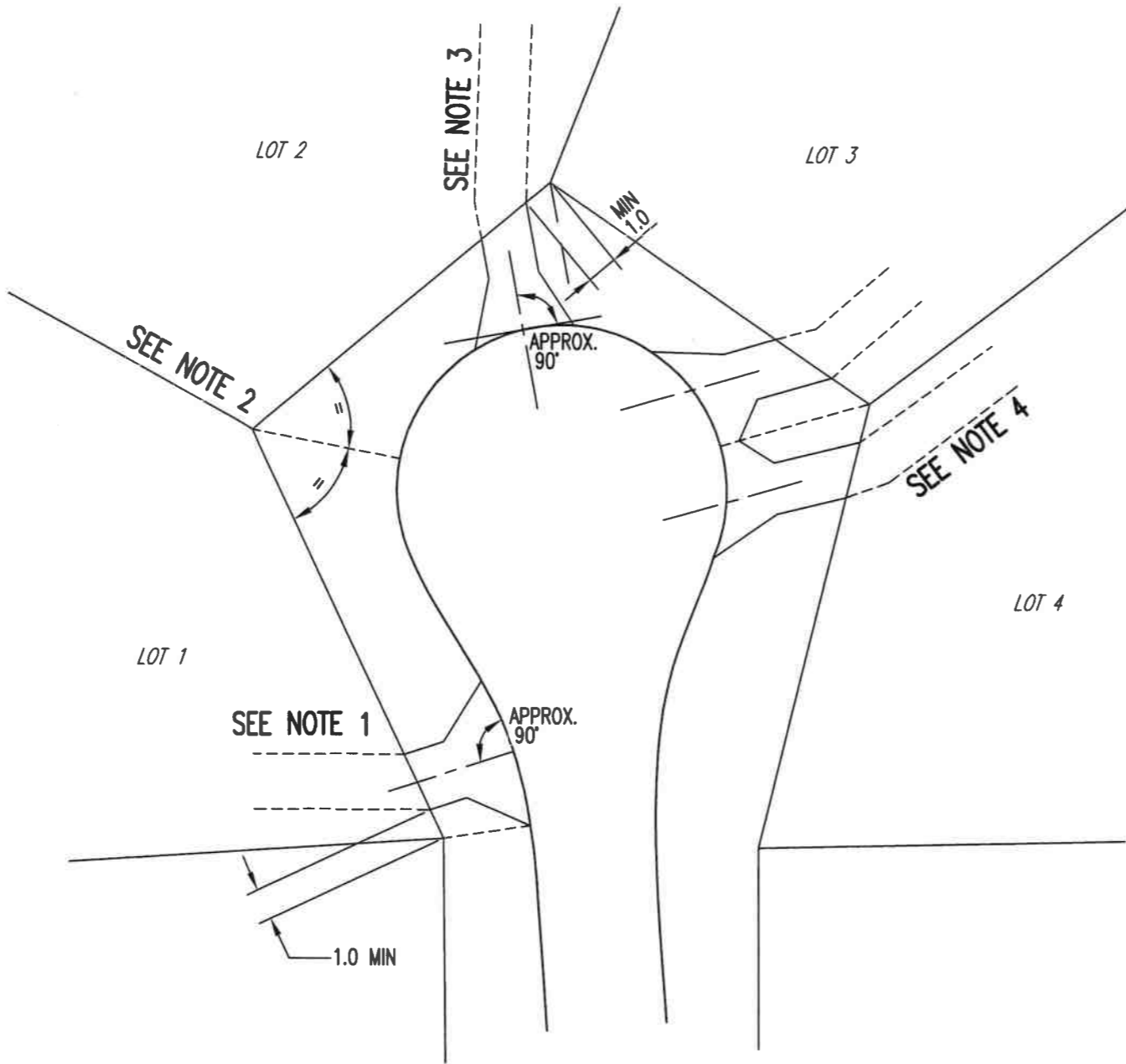


No	REVISION	BY	DATE	AUTH
0.	ISSUED	J.W.T.	8/2001	
1.	UPDATED TITLE BLOCK BRAND	K.R.	7/2022	P.W.



NOTES:

- CROSSOVER TO BE INSTALLED AT APPROXIMATELY 90° TO THE KERB AND TO BE A MINIMUM OF 1 METRE FROM THE SIDE BOUNDARY.
- DIVIDING THE VERGE BETWEEN NEIGHBOURING PROPERTIES IS ACHIEVED BY BISECTING THE ANGLE OF THE TWO FRONT BOUNDARIES.
- CROSSOVER MAY ENCROACH THE VERGE ADJACENT TO NEIGHBOURING PROPERTY.
- CROSSOVERS MAY INTERSECT WHEN THEY ARE CONSTRUCTED ALONG THE SAME SIDE BOUNDARY. 90° RULE NOT ENFORCED IN FAVOUR OF CROSSOVERS PARALLEL TO VERGE BOUNDARY TO GIVE BEST ACCESS TO EACH LOT.

SCALE: DIAGRAMMATIC		DATUM: N/A	GRID: N/A	CROSSOVERS AND VERGE RESIDENTIAL RESIDENTIAL CUL-DE-SAC HEAD  STANDARD	CITY OF WANNEROO ASSETS		
DESIGNED: C.O.W. CIVIL DESIGNER	DESIGN CHECKED:	APPROVED: * B. McCAWLEY 28/7/2022 COORDINATOR ASSET PLANNING SERVICES			FILE No. N/A	DRAWING No.	
DRAWN: C.O.W. CIVIL DESIGNER	DESIGN ARCHIVE:	APPROVED: * B. CHANG 1/8/2022 MANAGER ASSET PLANNING			PROJECT No. N/A	SHEET	
DRAWING ARCHIVE:	STANDARDS CHECK: * J. SONG 1/8/2022 TRANSPORT & DRAINAGE ASSET PLANNER	APPROVED: * B. GEE 1/8/2022 DIRECTOR ASSETS				REVISION	
				TS 07 -13-1			
				ORIGINAL DRG. SIZE A3			