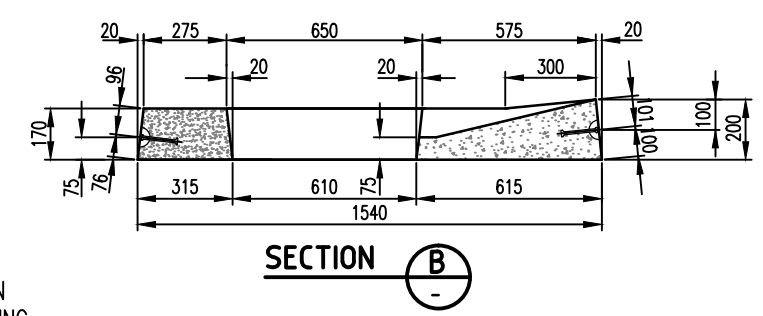
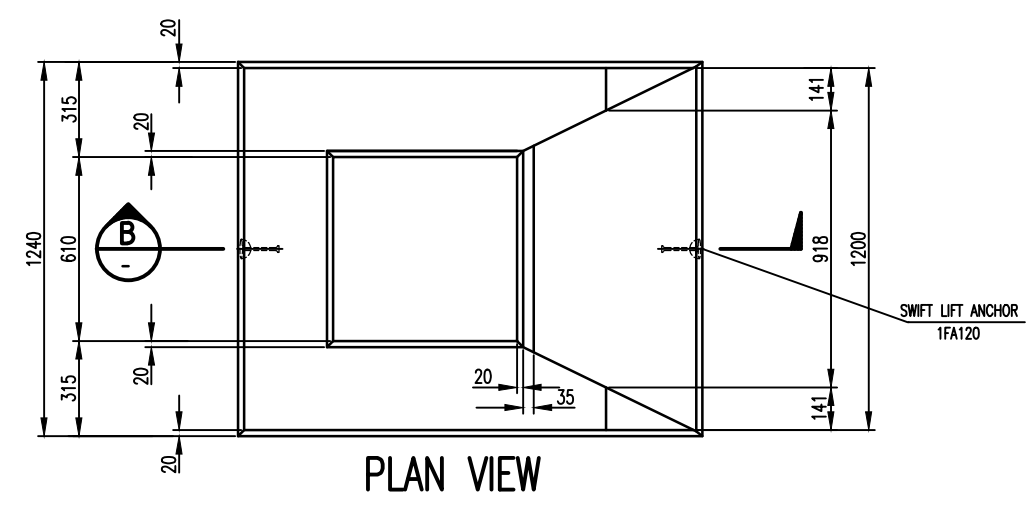
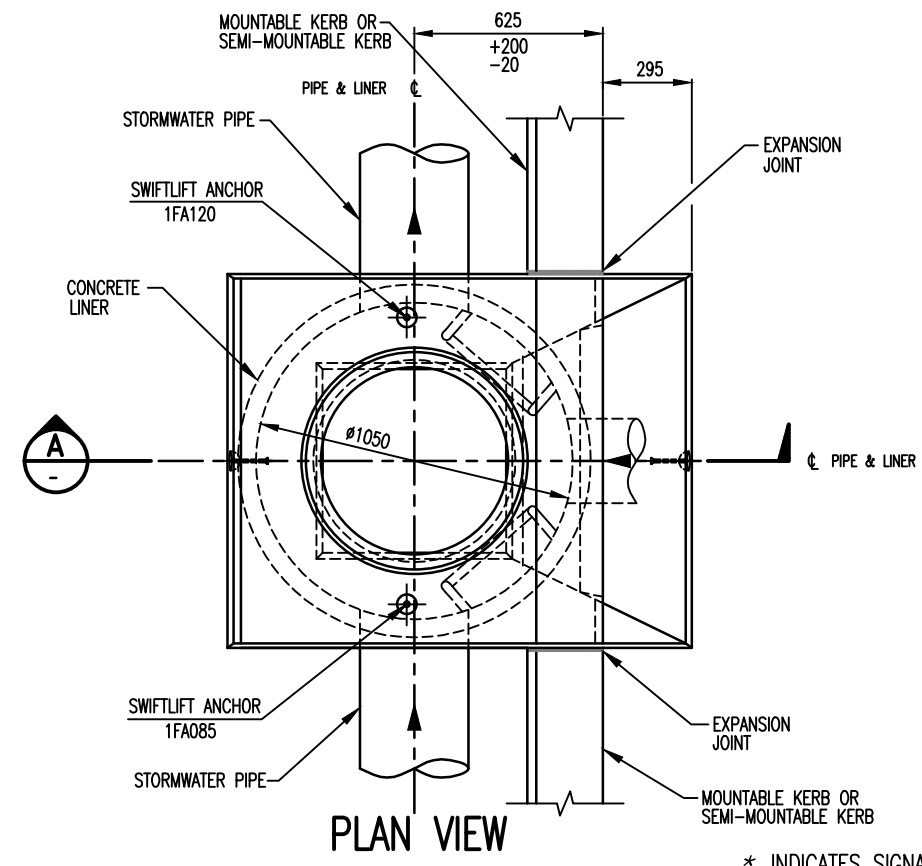
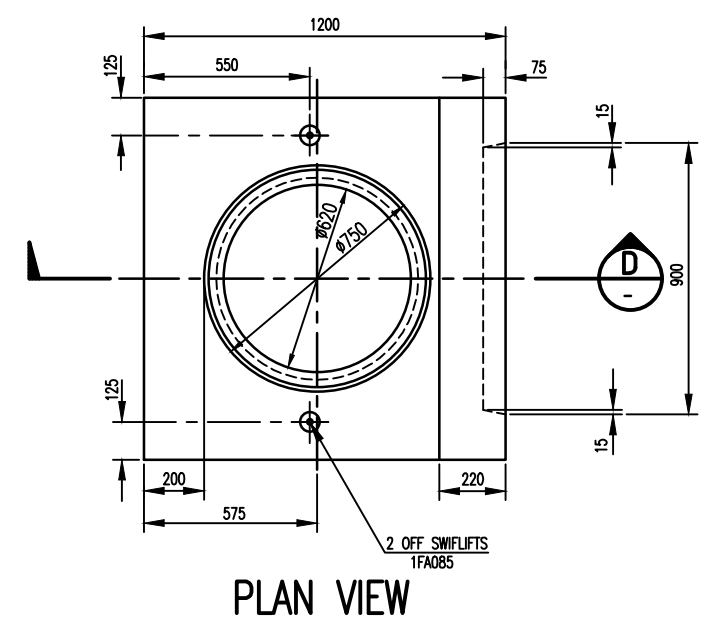
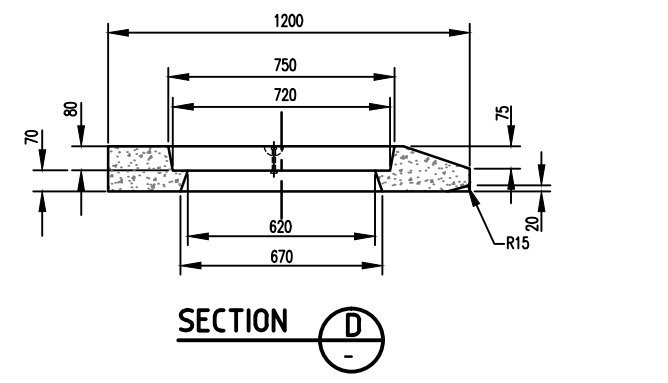
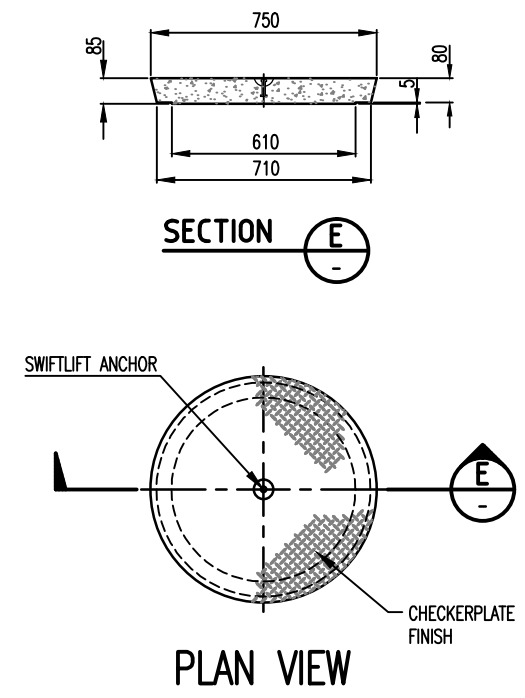
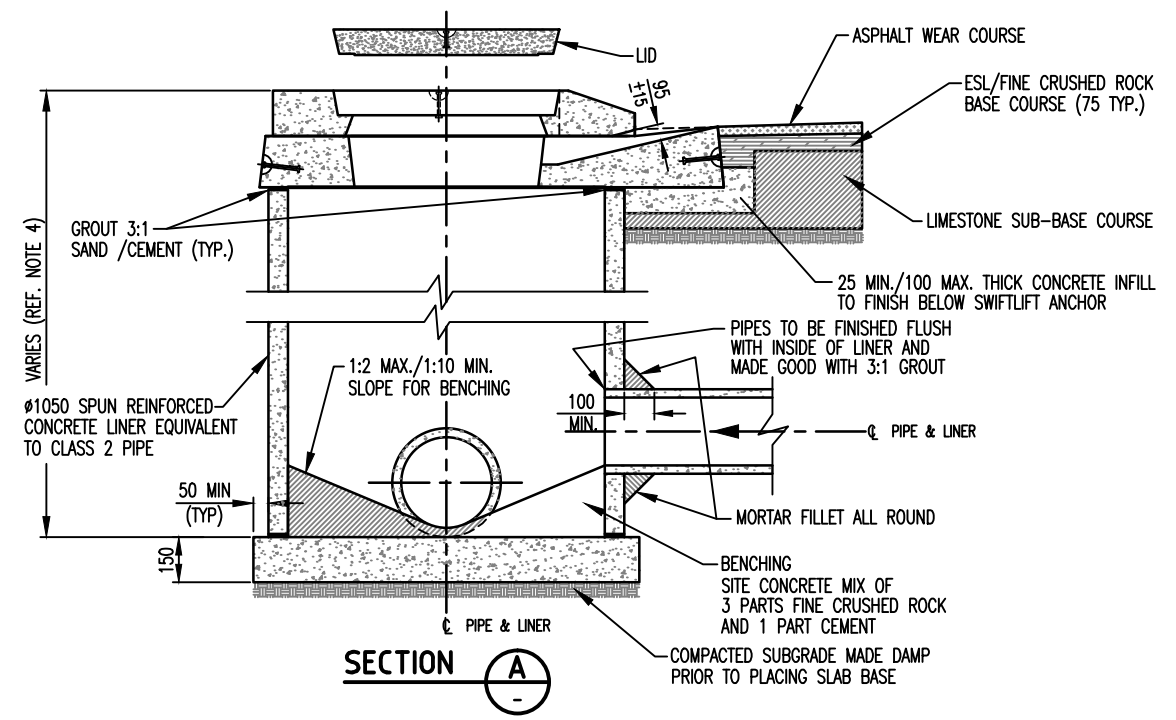


No	REVISION	BY	DATE	AUTH
0.	ISSUED	J.W.T.	8/2001	
1.	NOTE 3 & 4 ADDED	D.N.	6/2019	B.C.



- NOTES:**
1. ALL COMPONENTS TO BE DESIGNED TO A14 TRAFFIC LOADINGS 40KN.
 2. STEP IRONS REQUIRED IF DISTANCE BETWEEN BASE AND FINISHED GROUND LEVEL IS GREATER THAN 1 METRE.
 3. STEP IRON TOWARDS TRAFFIC DIRECTION
 4. DEPTH VARIES DEPENDING ON COVER REQUIREMENTS

* INDICATES SIGNATURES ON ORIGINAL ISSUE OF DRAWING.

DATUM: N/A	GRID: N/A	SURVEYOR: N/A	DESIGNED: C.O.W	APPROVED: * T. QUINN 8/8/2001
SCALE: 1:25	SCALE IN MILLIMETRES		DRAWN: C.O.W	COORDINATOR
DESIGN ARCHIVE:	DESIGN CHECKED:	DESIGNER	APPROVED: * R. KORENHOF 8/8/2001	MANAGER INFRASTRUCTURE
DRAWING ARCHIVE: *FINAL STANDARD DRAWINGS	STANDARDS/DOCUMENT CONTROL: * J. TRIMMER 8/8/2001	INFRASTRUCTURE TECHNICAL OFFICER	APPROVED: * D. BLAIR 8/8/2001	DIRECTOR TECHNICAL SERVICES

DRAINAGE
SIDE ENTRY PIT - TYPE 1
PLAIN SLAB
CONSTRUCTION DETAILS

LOCALITY: STANDARD

CITY OF WANNEROO
TECHNICAL SERVICES

INFRASTRUCTURE SERVICES

FILE No.	DRAWING No	SHEET	REVISION	ORIGINAL DRG.SIZE
	TS 03 - 7 - 1			A3