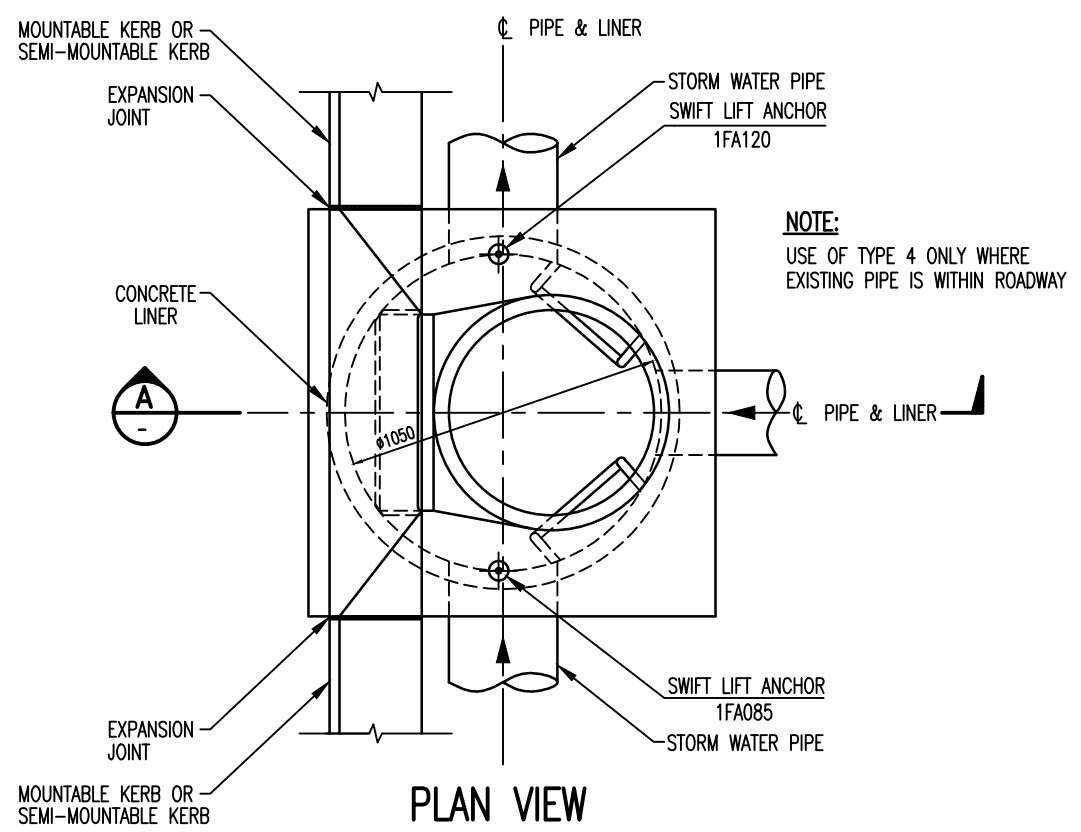
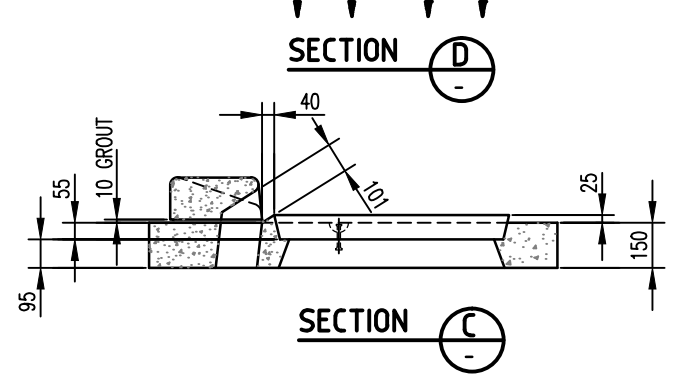
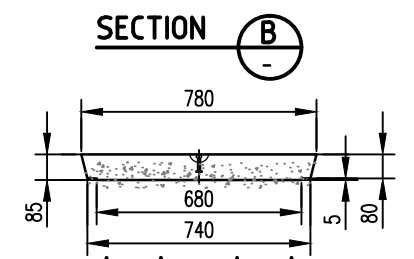
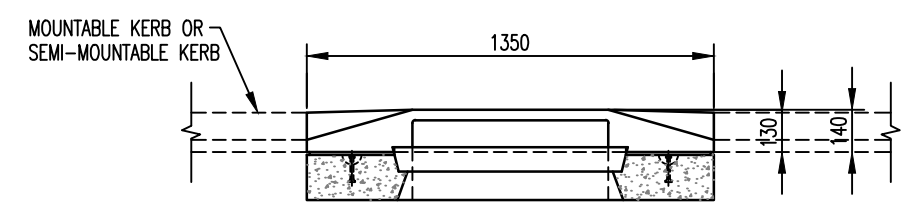
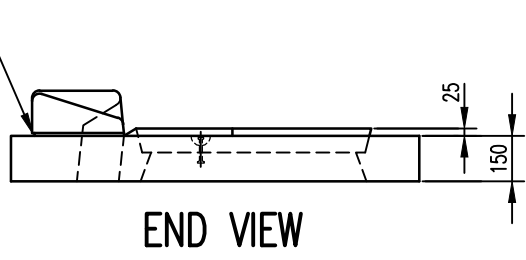
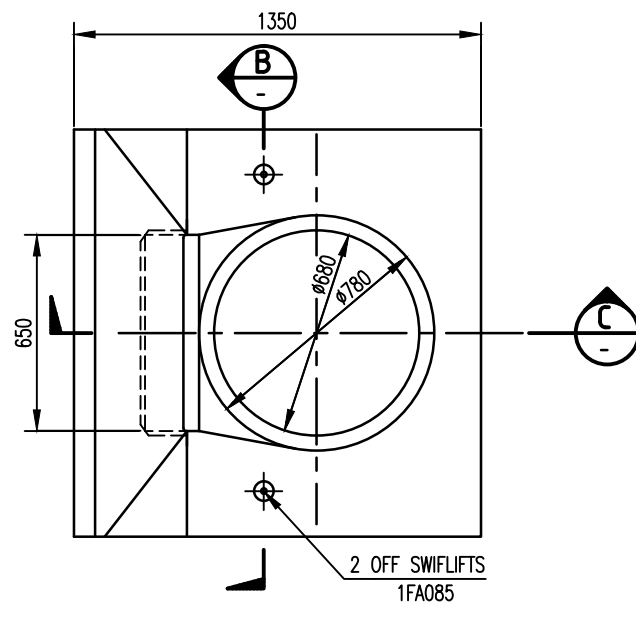
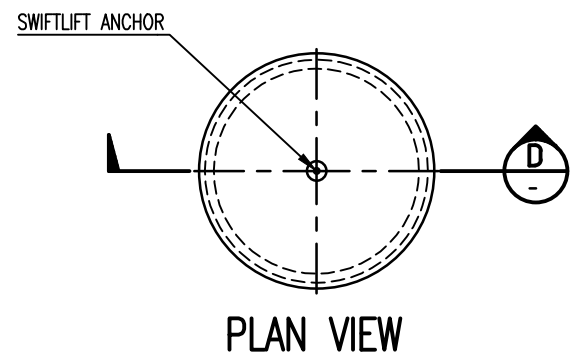
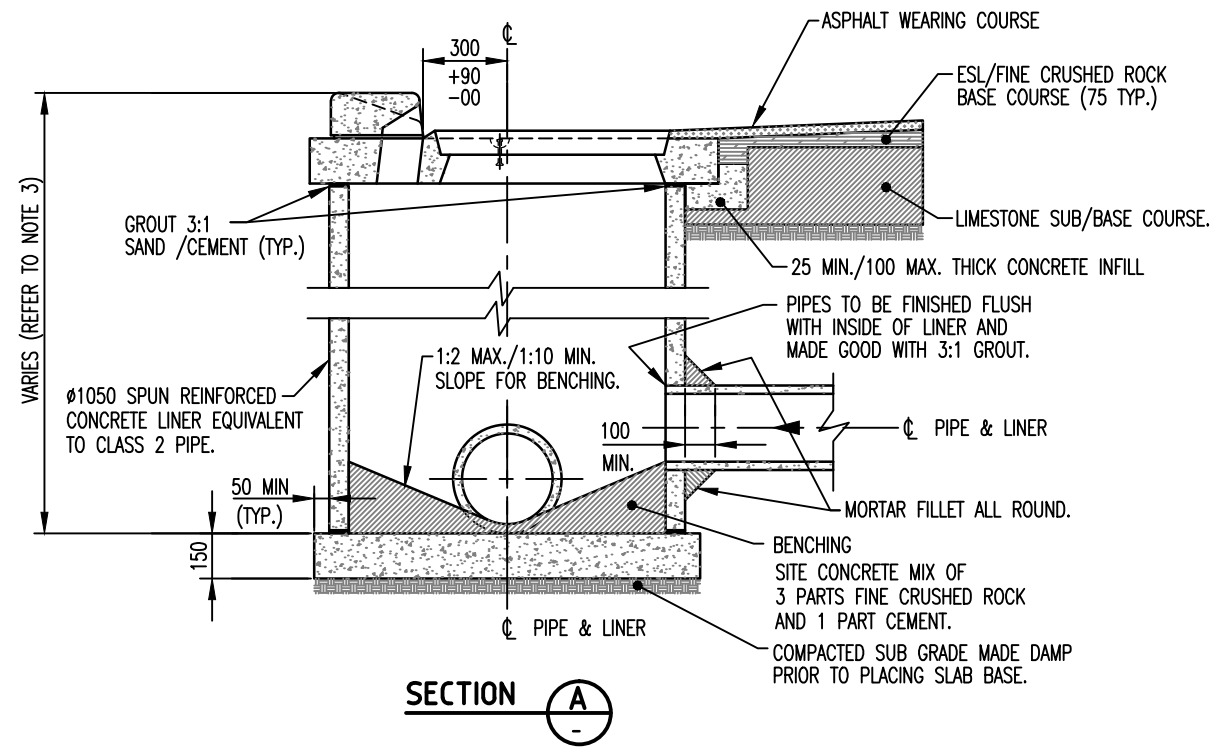


No	REVISION	BY	DATE	AUTH
0.	ISSUED	J.W.T.	8/2001	
1.	NOTE 2 & 3 ADDED	D.N.	6/2019	B.C.



- NOTES:**
- ALL COMPONENTS TO BE DESIGNED TO A14 TRAFFIC LOADINGS 40kN. STEP IRONS REQUIRED IF DISTANCE BETWEEN BASE AND FINISHED GROUND LEVEL IS GREATER THAN 1.0 METRE.
 - STEP IRON TOWARDS TRAFFIC DIRECTION
 - DEPTH VARIES DEPENDING ON COVER REQUIREMENTS

* INDICATES SIGNATURES ON ORIGINAL ISSUE OF DRAWING.

DATUM: N/A	GRID: N/A	SURVEYOR: N/A	DESIGNED: C.O.W.	APPROVED: * T. QUINN 8/8/2001
SCALE: 1:25	SCALE IN MILLIMETRES		DRAWN: C.O.W.	COORDINATOR
DESIGN ARCHIVE:	DESIGN CHECKED:	DESIGNER	* R. KORENHOF 8/8/2001 MANAGER INFRASTRUCTURE	APPROVED:
DRAWING ARCHIVE: *FINAL STANDARD DRAWINGS	STANDARDS/DOCUMENT CONTROL: * J. TRIMMER 8/8/2001 INFRASTRUCTURE TECHNICAL OFFICER	* D. BLAIR 8/8/2001 DIRECTOR TECHNICAL SERVICES		

DRAINAGE
SIDE ENTRY PIT - TYPE 4
COMBINATION SIDE ENTRY PIT & FLUSH ENTRY
CONSTRUCTION DETAILS

LOCALITY: STANDARD

CITY OF WANNEROO
TECHNICAL SERVICES

INFRASTRUCTURE SERVICES

FILE No.	DRAWING No	SHEET	REVISION	ORIGINAL DRG.SIZE
	TS 03 - 10 - 1			A3