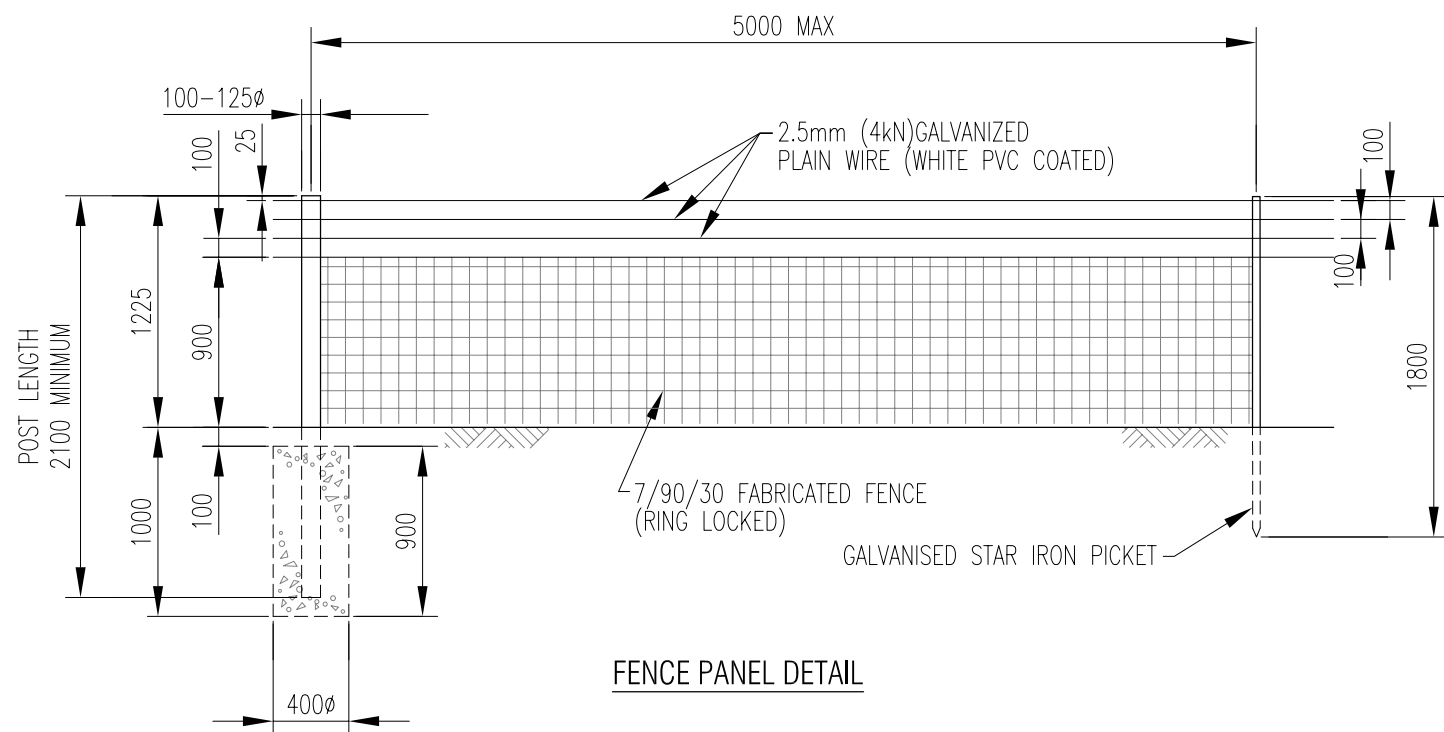
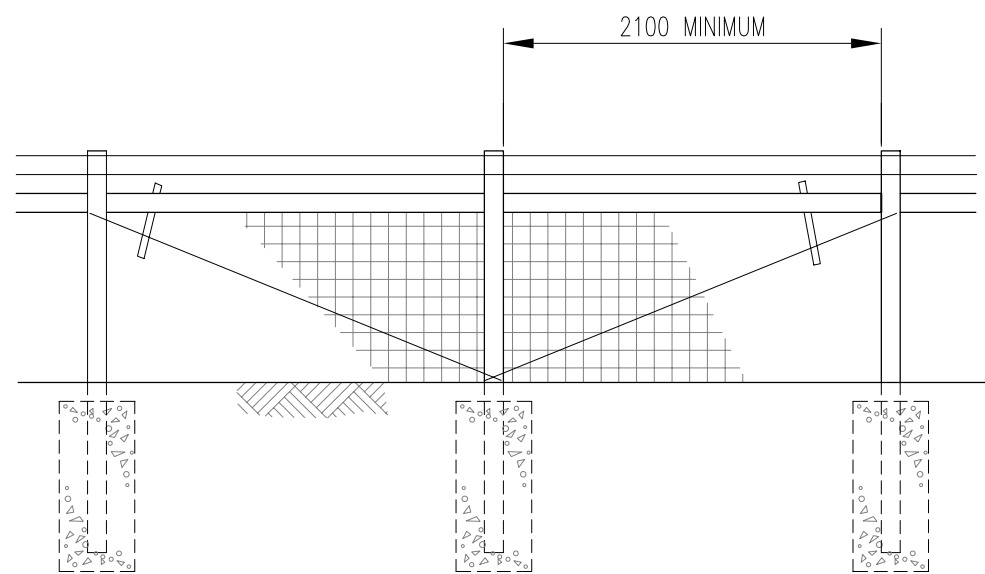


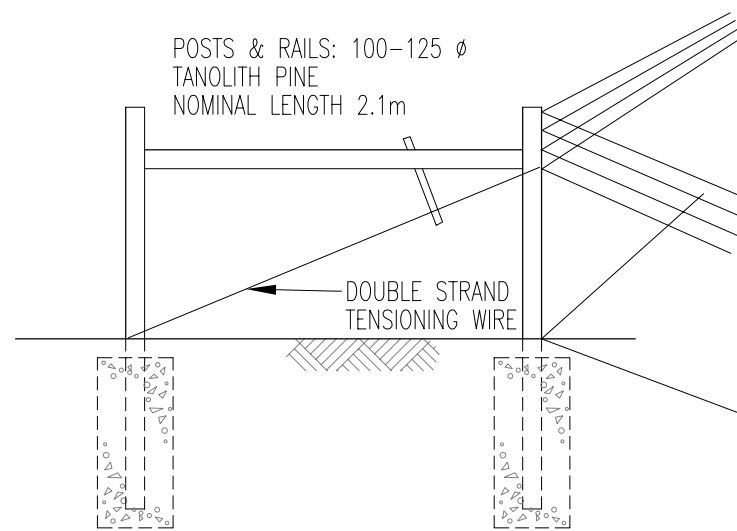
No	REVISION	BY	DATE	AUTH
0.	ISSUED	J.W.T.	8/2001	
1.	NOTES AMENDED	T.T.	3/2006	B.C.



FENCE PANEL DETAIL



INTERMEDIATE BRACING DETAIL



ALIGNMENT BRACING DETAIL

NOTES:

- FOR ROAD FRONTAGE FENCE, POSTS TO BE AT 25m CRS.(MAX.)
- FOR RURAL FENCING POSTS TO BE AT 100m MAX
- ALIGNMENT BRACING TO BE LOCATED AS DIRECTED
- INTERMEDIATE BRACING TO BE SPACED AS DIRECTED (ON STRAIGHT FENCES, MAXIMUM SPACING 125mm.)
- FABRICATED WIRE TO BE 7/90/30 RINGLOCK FENCING.
- WIRES TO BE FIRMLY SECURED TO POSTS AND PICKETS.
- ALL UPRIGHT MEMBERS SHALL BE VERTICAL WITHIN A TOLERANCE OF 1:100.
- THE BASE OF FOOTING HOLES SHALL BE ADEQUATELY COMPACTED BY RAMMING.
- THE DIAMETER OF EACH TIMBER POST OR RAIL SHALL NOT VARY BY MORE THAN 25mm OVER A 2m LENGTH (OR 12.5mm PER METRE LENGTH).
- CONCRETE SHALL BE MIXED IN THE PROPORTIONS OF (4) PARTS BY WEIGHT OF CLEAN DUST FREE AGGREGATE (NOT EXCEEDING 20mm SIZE) PLUS TWO (2) PARTS BY WEIGHT OF CLEAN DUST FREE SAND PLUS ONE (1) PART BY WEIGHT OF MASONRY CEMENT, WITH WATER CONTENT SUFFICIENT TO ENSURE A SLUMP OF NOT MORE THAN 100mm USING THE AUSTRALIAN STANDARD SLUMP TEST CONE.
- CONCRETE SHALL ACHIEVE A MINIMUM COMPRESSIVE STRENGTH OF 20MPa AT 28 DAYS.
- CONCRETE FOOTINGS SHALL BE CURED FOR TWENTY FOUR (24) HOURS BEFORE ERECTION OF WIRES OR MESH TO POSTS AND PICKETS.
- WIRES ARE TO BE FIXED ON THE ROAD PAVEMENT OR PUBLIC ACCESS WAY SIDE OF POSTS AND UPRIGHTS UNLESS ADJACENT TO PRIVATE PROPERTY OR AS INDICATED ON DESIGN DRAWINGS.
- GALVANIZED COATINGS FOR ALL FERROUS MATERIALS SHALL HAVE COATINGS OF ZINC IN COMPLIANCE WITH AS1650 (GALVANIZED COATINGS ON FERROUS ARTICLES). THE COATING FOR WIRE SHALL BE TYPE A (HEAVILY GALVANIZED). THE PVC COATING OR COLOURBOND COATING TO WIRE SHALL BE BLACK, UNLESS OTHERWISE DIRECTED BY THE CITY.
- ALL STAR PICKETS SHALL BE FITTED WITH APPROVED WHITE CAPS.
- TIMBER BEARING POLES/RAILS TO UPRIGHTS WITH 2 STRANDS PLAIN WIRE, END SHARPENED & INSERTED INTO UPRIGHTS OR END-DRILLED AND PINNED TO ENSURE SECURED FIXING. REFER TO TS01-4

* INDICATES SIGNATURES ON ORIGINAL ISSUE OF DRAWING.

DATUM: N/A	GRID: N/A	SURVEYOR: N/A	DESIGNED: C.O.W.	APPROVED: * T. QUINN 8/8/2001
SCALE: 1:40 SCALE IN MILLIMETRES			DRAWN: C.O.W.	COORDINATOR: APPROVED: * R. KORENHOF 23/8/2001 MANAGER INFRASTRUCTURE
DESIGN ARCHIVE:		DESIGN CHECKED:	DESIGNER:	APPROVED: * D. BLAIR 23/8/2001 DIRECTOR TECHNICAL SERVICES
DRAWING ARCHIVE: *\FINAL STANDARD DRAWINGS		STANDARDS/DOCUMENT CONTROL: * J. TRIMMER 8/8/2001 INFRASTRUCTURE TECHNICAL OFFICER		

FENCING

RURAL CONSERVATION FENCING

LOCALITY STANDARD

CITY OF WANNEROO
TECHNICAL SERVICES

INFRASTRUCTURE SERVICES

FILE No.	DRAWING No	SHEET	REVISION	ORIGINAL DRG. SIZE
	TS 01 - 3 - 1			A3