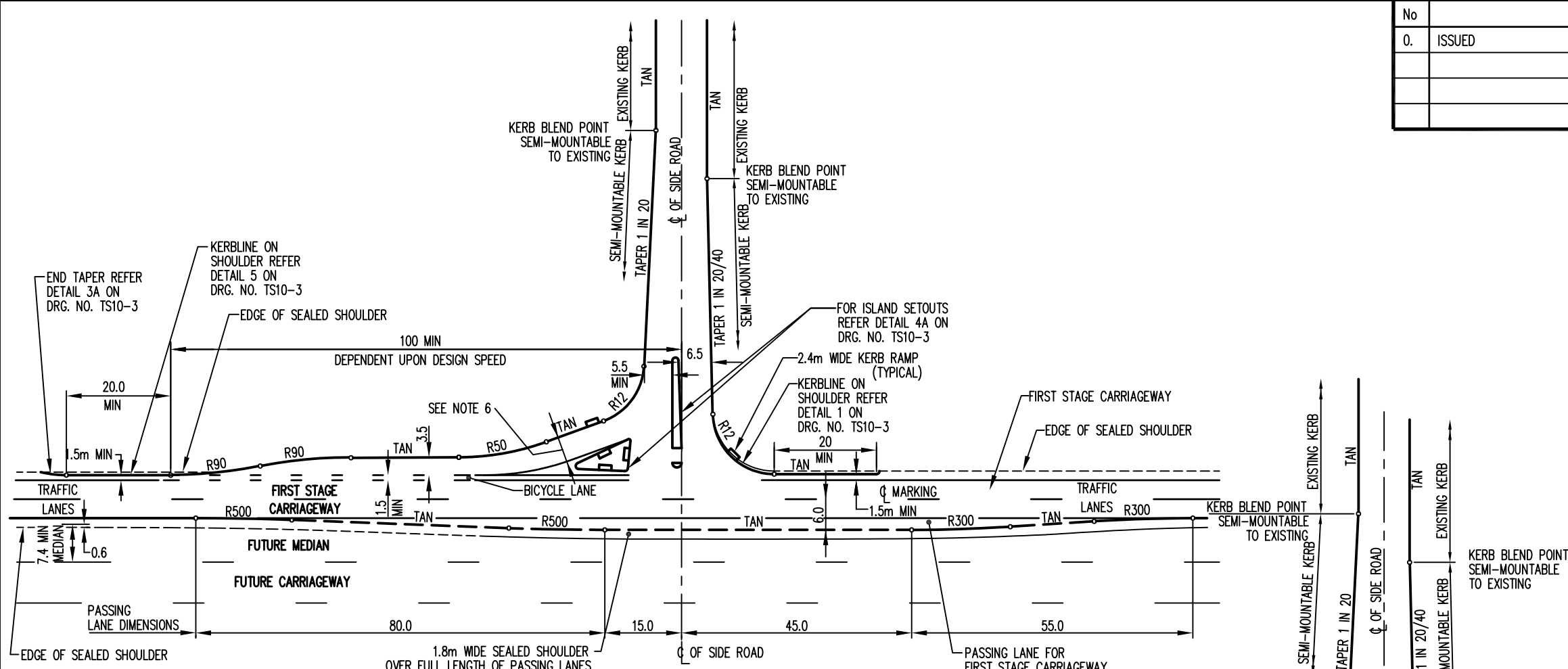
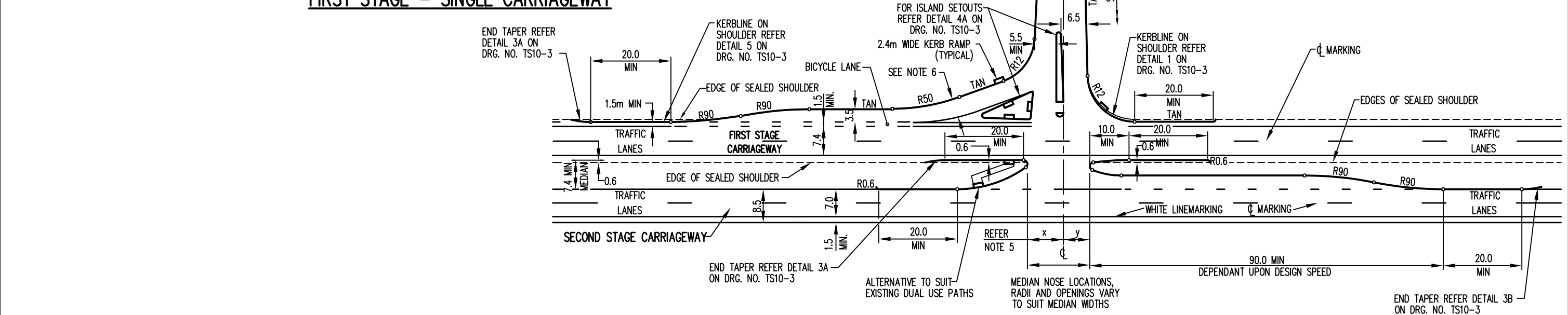


| No | REVISION | BY | DATE | AUTH |
|----|----------|--------|--------|------|
| 0. | ISSUED | J.W.T. | 8/2001 | |
| | | | | |
| | | | | |



FIRST STAGE - SINGLE CARRIAGEWAY



SECOND STAGE - DUAL CARRIAGEWAY

- NOTES**
1. ALL KERB RAMPS TO BE 2.4m WIDE. REFER TO STANDARD DRG. NO. TS05-3 FOR KERB RAMP DETAILS.
 2. STORMWATER DRAINAGE GULLIES TO BE LOCATED ON THE UPSTREAM SIDE OF KERB RAMPS.
 3. ALL KERBING TO BE SEMI-MOUNTABLE, REFER TO STANDARD DRG. NO. TS05-1 FOR DETAILS.
 4. AS A GENERAL GUIDE, AT ALL MEDIAN OPENINGS, DISTANCE "x" IS TO BE GREATER THAN DISTANCE "y".
 5. REFER TO DRG. NO. TS05-3 FOR HANDRAIL / KERB RAMP LAYOUT ON DUAL USE PATHS.
 6. LEFT TURN LANE MIN. WIDTH OF 4.6m. REFER TO AUSTRROADS STANDARDS.

* INDICATES SIGNATURES ON ORIGINAL ISSUE OF DRAWING.

| | | | | |
|---|--|----------------------------------|---------------------------------|------------------------------|
| DATUM: N/A | GRID: N/A | SURVEYOR: N/A | DESIGNED: C.O.W | APPROVED: *T. QUINN 8/8/2001 |
| SCALE: 1:1000 | SCALE IN METRES | | DRAWN: C.O.W | COORDINATOR |
| DESIGN ARCHIVE: | DESIGN CHECKED: / /2001 | DESIGNER | APPROVED: *R. KORENHOF 8/8/2001 | MANAGER INFRASTRUCTURE |
| DRAWING ARCHIVE: *FINAL STANDARD DRAWINGS | STANDARDS/DOCUMENT CONTROL: *J. TRIMMER 8/8/2001 | INFRASTRUCTURE TECHNICAL OFFICER | APPROVED: *D. BLAIR 8/8/2001 | DIRECTOR TECHNICAL SERVICES |

JUNCTION TREATMENTS
 DISTRICT DISTRIBUTOR TO LOCAL DISTRIBUTOR
 TYPE 1
 LOCALITY STANDARD

CITY OF WANNEROO
TECHNICAL SERVICES
INFRASTRUCTURE SERVICES

| | | | | |
|----------|------------|-------|----------|-------------------|
| FILE No. | DRAWING No | SHEET | REVISION | ORIGINAL DRG.SIZE |
| | | | | |

TS 10 - 1 - 0

A3