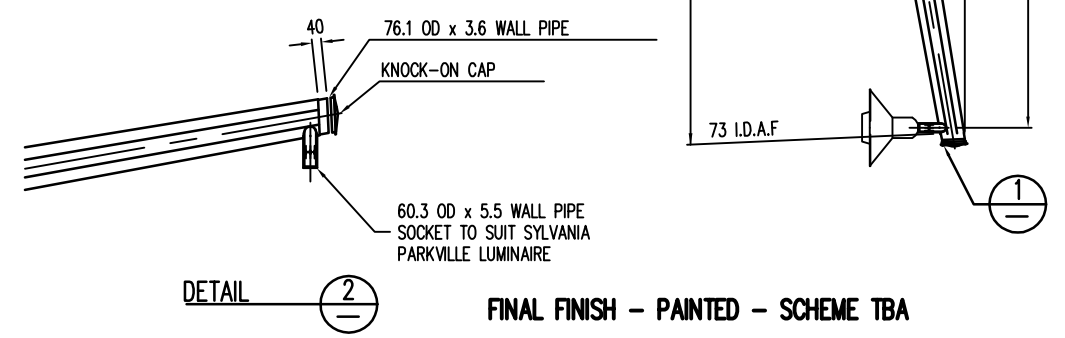


2- M12 WELD OVER Ø14 HOLES WITH M12 SET SCREWS FULLY SCREWED IN AFTER GALV.

CATALOGUE No WN/124FD/30DOS



FINAL FINISH - PAINTED - SCHEME TBA

NOTES:

1. ALL STEEL PLATES TO CONFORM TO AS 3678 GRADE 250 U.O.N.
2. ALL STEEL BARS AND SECTIONS TO CONFORM TO AS 3679 GRADE 250 U.O.N.
3. ALL FILLET WELDS TO BE 6mm CONTINUOUS U.O.N ARE TO CONFORM TO AS 1554, PART 1 CATEGORY G.P. U.O.N.
4. ALL SHARP EDGES AND BURRS TO BE REMOVED.
5. ALL TAPER LOCK JOINT LENGTHS ARE NOMINAL U.O.N.
6. ALL STEEL TO BE FULLY HOT DIP GALVANISED AFTER FABRICATION IN ACCORDANCE WITH AS 1650.
7. WORKSHOP FABRICATION TO BE DONE ACCORDING TO RIVERTON STANDARD TOLERANCE SHEET, (REFER TO SHEET DRG. No. WS 160)

COLOUR 1 - CLARET
COLOUR 2 - DOESKIN

* INDICATES SIGNATURES ON ORIGINAL ISSUE OF DRAWING.

DATUM: N/A	GRID: N/A	SURVEYOR: N/A	DESIGNED: C.O.W	APPROVED: * T. QUINN 8/8/2001
SCALE: DIAGRAMMATIC		DRAWN: C.O.W	DESIGN CHECKED:	COORDINATOR APPROVED: * R. KORENHOF 8/8/2001
DESIGN ARCHIVE:		DESIGNER:	STANDARDS/DOCUMENT CONTROL: * J. TRIMMER 8/8/2001	MANAGER INFRASTRUCTURE
DRAWING ARCHIVE: *FINAL STANDARD DRAWINGS		INFRASTRUCTURE TECHNICAL OFFICER	* D. BLAIR 8/8/2001	DIRECTOR TECHNICAL SERVICES

LIGHTING FACILITIES
LIGHT / BANNER POLES
MOUNTING DETAILS

LOCALITY STANDARD

CITY OF WANNEROO
TECHNICAL SERVICES

INFRASTRUCTURE SERVICES

FILE No.	DRAWING No	SHEET	REVISION	ORIGINAL DRG. SIZE

TS 19 - 2 - 1 **A3**