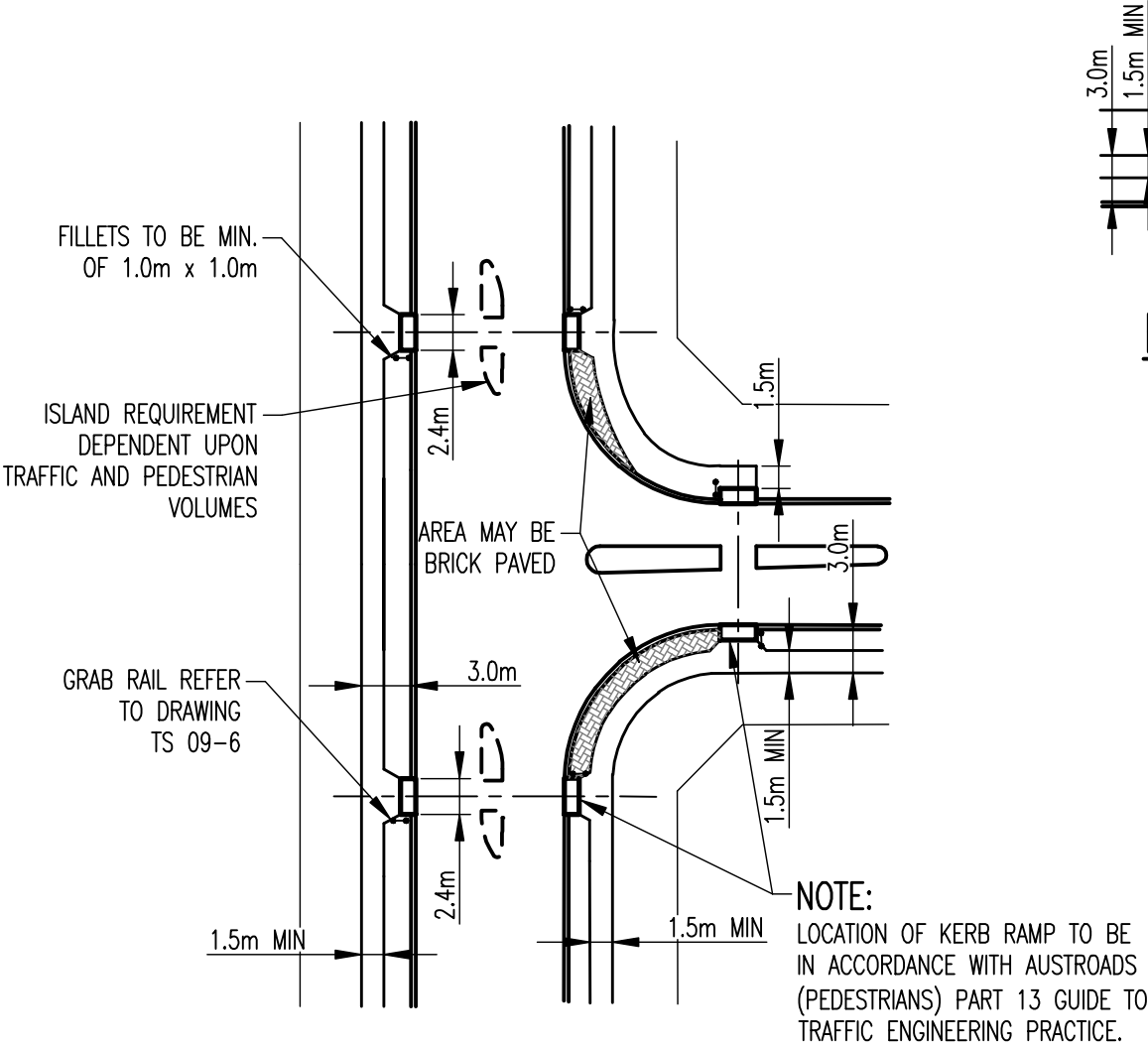
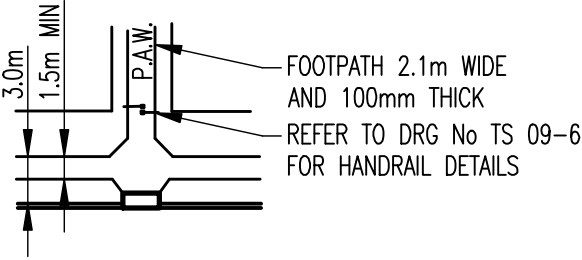


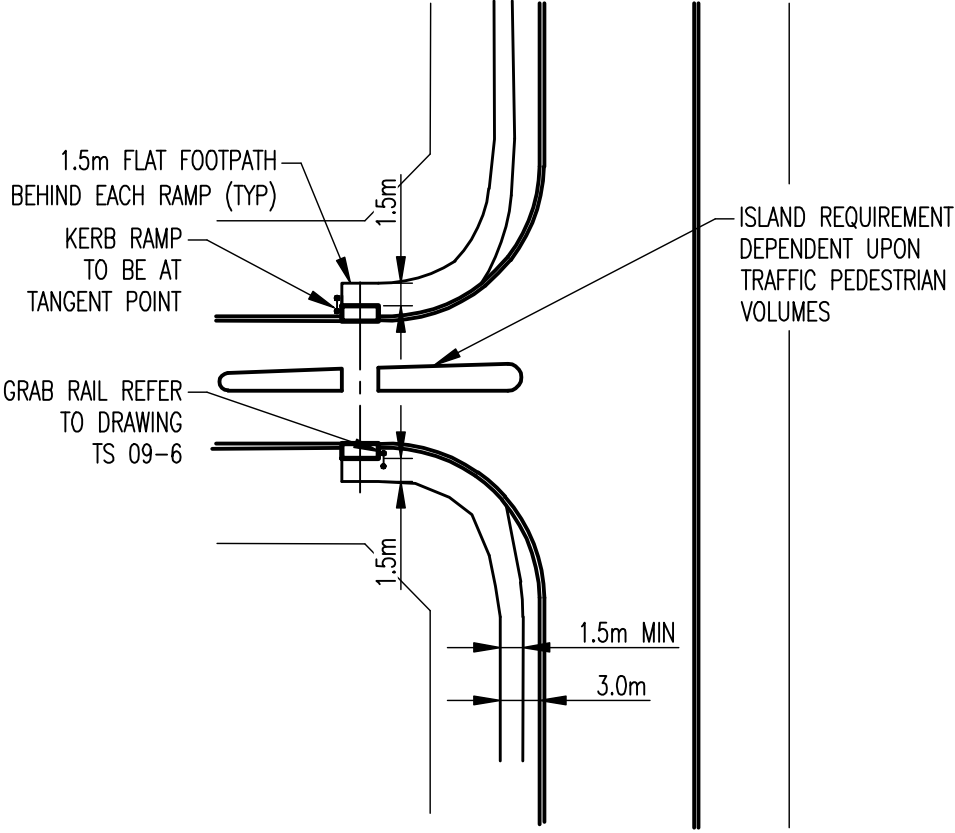
No.	REVISION	BY	DATE	AUTH
0	ISSUED	J.W.T	8/2001	
1	FOOTPATH DIMENSIONS ADDED	T.T	2/2006	B.C.
2	TITLE BLOCK UPDATED	C.H.	11/2010	B.C.



ROAD WITH FOOTPATH BOTH SIDES




FOOTPATH IN P.A.W.



ROAD WITH ONE FOOTPATH

- NOTES:
- REFER TO DRG. No. TS 05-3 FOR DETAILS FOR RAMPS
  - REFER TO DRG. NO. TS 09-7 FOR DETAILS OF TACTILE GROUND SURFACE INDICATORS.

SCALE: 1:500	50 0 5 10 15 20 25	DATUM: N/A	GRID: N/A
SURVEYED: N/A	CHECKED: * T.QUINN	2010	8/8/2001
SURVEYOR	COORDINATOR		
DESIGNED: C.O.W	AUTHORISED: * R.KORENHOF	2010	23/8/2001
CIVIL PROJECTS DESIGNER	MANAGER INFRASTRUCTURE		
DRAWN: C.O.W	APPROVED: * D.BLAIR	2010	23/8/2001
CIVIL PROJECTS DESIGNER	DIRECTOR TECHNICAL SERVICES		

PEDESTRIAN AND BICYCLE FACILITIES FOOTPATH LAYOUTS FOR DISTRIBUTOR AND LOCAL ROADS	CITY OF WANNEROO INFRASTRUCTURE				
	FILE No. N/A	DRAWING No.	SHEET	REVISION	ORIGINAL DRG. SIZE
	PROJECT No. N/A	TS 09-01-2			A3
STANDARD					