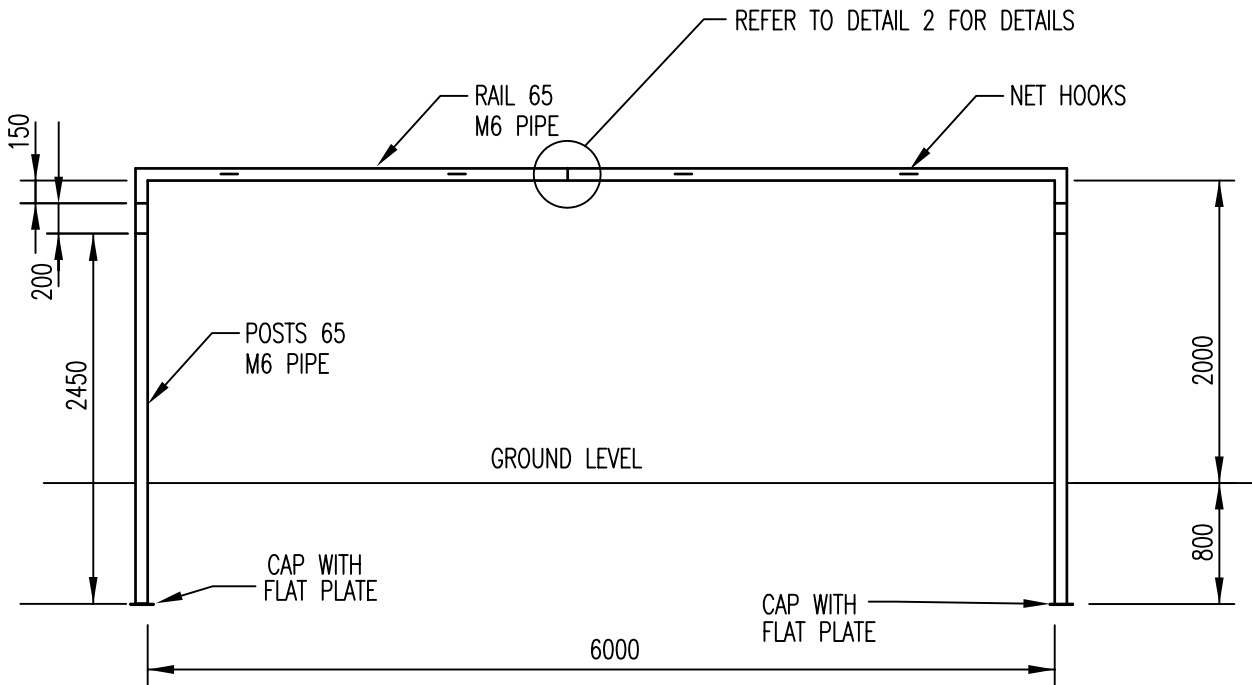
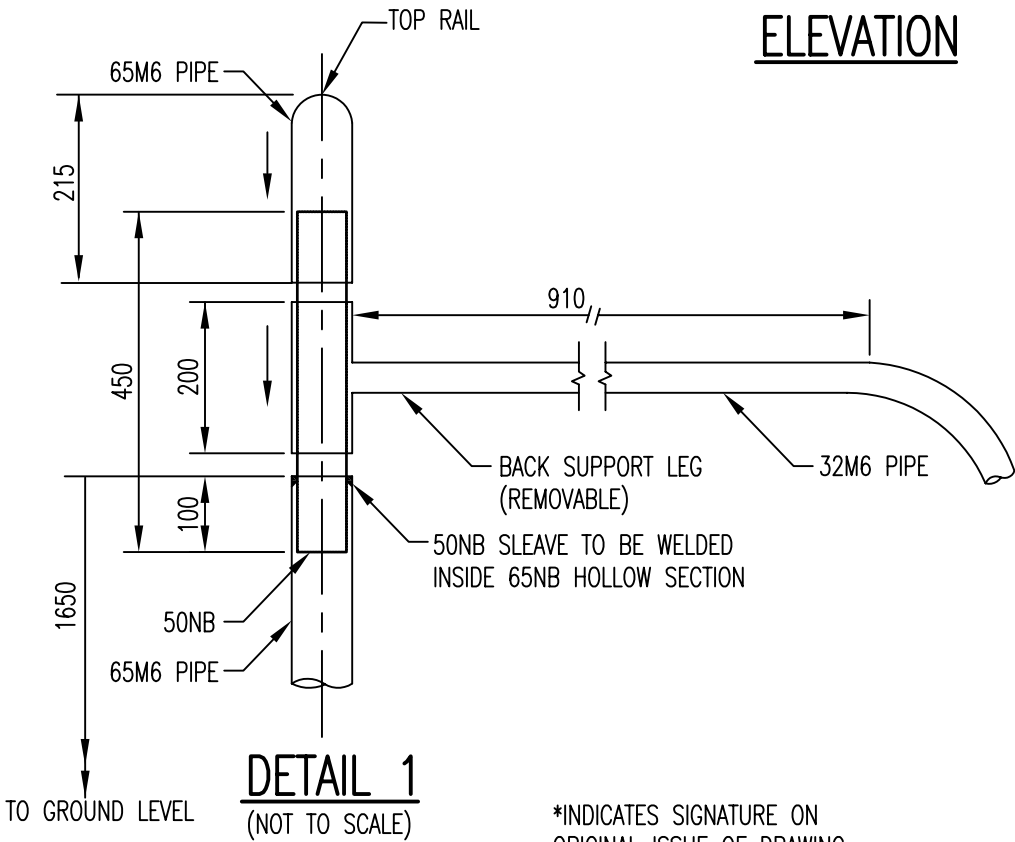


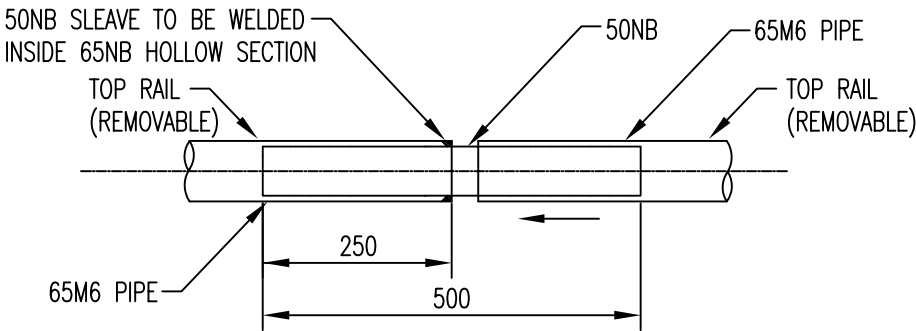
No.	REVISION	BY	DATE	AUTH
A	DRAFT COPY			
0	ISSUED	P.M.	3/2007	



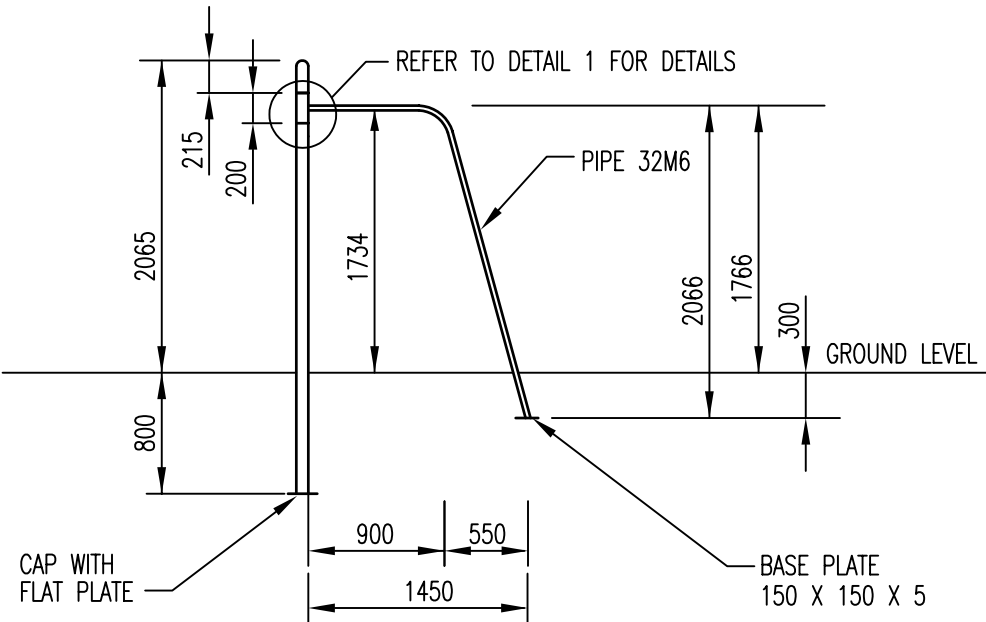
ELEVATION



DETAIL 1
(NOT TO SCALE)



DETAIL 2
(NOT TO SCALE)



END ELEVATION

NOTES:

- ALL MEASUREMENTS IN MILLIMETERS.
- FOUR POSTS AND TWO RAILS PER SET OF 65 M6 DIAMETER PIPE NOMINAL BORE 3.6MM THICKNESS OF WALL.
- FOUR BACK STRUTS PER SET OF 32M6 DIAMETER PIPE.
- BACK STRUT SLEEVES TO BE FREE OF WELDING AND CUTTING BURS ON THE INSIDE.
- POSTS AND STRUTS ARE TO HAVE CAPS WELDED ONTO THEIR ENDS.
- STRUTS TO HAVE 150x150x5 BASE PLATES WELDED ONTO THEIR ENDS.
- ALL WELDS TO BE COATED WITH COLD GALVANIZING PAINT.
- SPIGOTS TO BE SEAL WELDED TO POSTS ONLY.
- ALL EXPOSED SURFACES TO BE POWDER COATED WHITE

SCALE: 1:50	500 0 500 1000 1500 2000	DATUM: LOCAL	GRID: LOCAL
SURVEYED: / /2007	CHECKED: * PAUL WHITE 27/03/2007		
SURVEYOR	COORDINATOR PARKS MAINTENANCE		
DESIGNED: C.O.W. / /2007	AUTHORISED: * ALAN MILLARD 28/03/2007		
DESIGNER	MANAGER INFRASTRUCTURE MAINTENANCE		
DRAWN: C.O.W. / /2007	APPROVED: * DENNIS BLAIR 30/03/2007		
DESIGNER	DIRECTOR INFRASTRUCTURE		

SPORTING EQUIPMENT

TRANSPORTABLE SOCCER GOALS
CONSTRUCTION DETAILS
UNDER TEN'S

STANDARD
SHEET 2 OF 3

CITY OF WANNEROO INFRASTRUCTURE



FILE No.	DRAWING No.	SHEET	REVISION	ORIGINAL DRG. SIZE
PROJECT No.	TS 30-11-0			A3