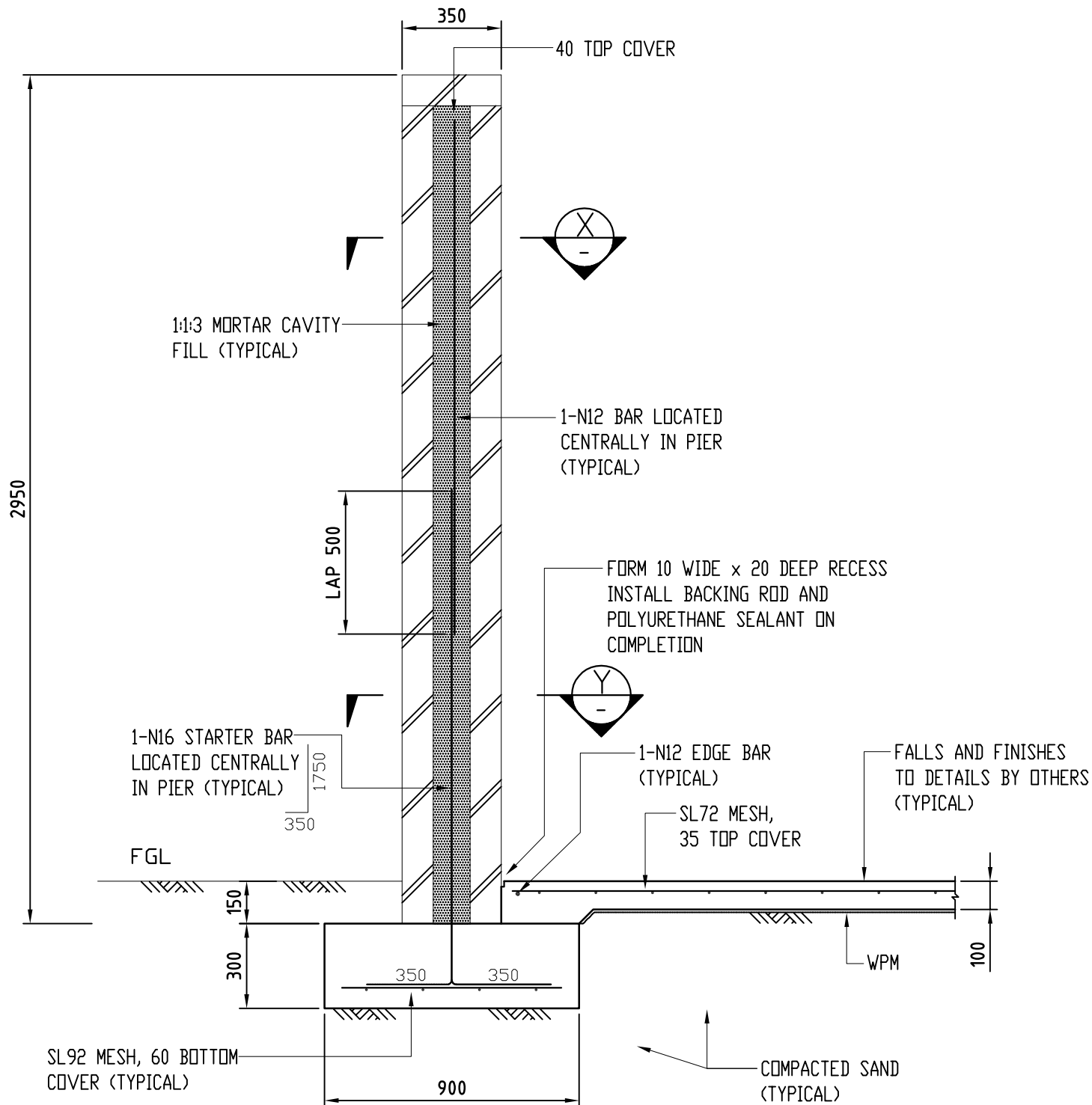


No.	REVISION	BY	DATE	AUTH
0	ISSUED	N.N	12/2006	
1	TITLE BLOCK CHANGED	N.N	02/2007	



GENERAL NOTES -

1. ALL DISCREPANCIES SHALL BE REFERRED TO THE SUPERINTENDENT FOR A DECISION BEFORE PROCEEDING WITH THE WORK.
2. DO NOT SCALE FROM THE DRAWINGS.
3. REFER TO SUPERINTENDENT FOR SETTING OUT DETAILS.
4. COMPLY WITH THE LATEST SAA CODES AND AMENDMENTS.
5. THE BUILDER SHALL ENSURE THE STABILITY OF THE STRUCTURE AND SAFETY TO PERSONNEL DURING ALL PHASES OF CONSTRUCTION.

FOOTING AND SLAB ON GROUND -

1. COMPACT THE SOIL UNDER FOOTING & SLAB TO 8 BLOWS PER 300mm TESTED USING A STANDARD PERTH SAND PENETROMETER FOR A DEPTH OF 750mm BELOW THE UNDERSIDE OF FOOTING AND SLAB ON GROUND
2. LOCATE FOOTING CENTRALLY UNDER WALL
3. PROVIDE AN APPROVED MOISTURE PROOF MEMBRANE TO THE UNDERSIDE OF SLAB ON GROUND.

CONCRETE -

1. ALL MATERIALS AND WORKMANSHIP SHALL COMPLY WITH AS 3600.
2. CURE ALL CONCRETE FOR SEVEN DAYS AFTER PLACEMENT BY PONDING OR BY OTHER APPROVED MEANS WHICH COMPLIES WITH AS 3799
3. COVER TO REINFORCEMENT UNLESS OTHERWISE SHOWN SHALL BE:
 - FOOTING 60mm
 - SLAB ON GROUND 35mm
4. COMPACT CONCRETE USING APPROVED INTERNAL VIBRATORS OR BY RODDING IN CAVITY FILL APPLICATIONS.
5. ALL CONCRETE SHALL BE SUPPLIED BY AN APPROVED PRE-MIX COMPANY AS FOLLOWS -

GRADE	SLUMP	MAX. AGG.
STRIP FOOTING	N25	80mm 20mm
SLAB ON GROUND	N25	80mm 20mm

REINFORCEMENT -

1. 'N' IS NORMAL DUCTILITY GRADE 500N DEFORMED BARS TO AS/NZS 4671.
2. 'R' IS GRADE 230R HOT ROLLED PLAIN BARS TO AS/NZS 4671.
3. 'SL' IS HARD DRAWN WIRE REINFORCING FABRIC TO AS/NZS 4671.
4. 'W' IS HARD DRAWN PLAIN WIRE TO AS/NZS 4671.
5. MINIMUM LAPS REQUIRED, FABRICS = 230mm, N BARS = 40 DIAMETERS, R BARS = 50 DIAMETERS U.N.D.
6. CLEAN ALL REINFORCEMENT PRIOR TO PLACING CONCRETE.
7. ENSURE ALL REINFORCEMENT IS ADEQUATELY SUPPORTED ON APPROVED FULLY PLASTIC CHAIRS OR CONCRETE BLOCKS.

MASONRY -

1. ALL MATERIALS AND WORKMANSHIP SHALL COMPLY WITH AS 3700, AS 2699 & BCA
2. MASONRY SHALL HAVE A MINIMUM CHARACTERISTIC UNCONFINED COMPRESSIVE STRENGTH (f'_{uc}) OF 12 MPa. U.N.D. IN THE TECHNICAL SPECIFICATION.
3. MINIMUM MORTAR MIX SHALL BE 1 CEMENT: 1 LIME: 6 SAND U.N.D.
4. THE BUILDER SHALL TAKE PARTICULAR CARE TO ENSURE ALL PERPENDS AND BEDJOINTS ARE FULLY MORTARED.

* INDICATES SIGNATURES ON ORIGINAL ISSUE OF DRAWING.

SCALE:	DATUM:	GRID:
	N/A	N/A
SURVEYED: N/A SURVEYOR	CHECKED: *M.BEST COORDINATOR PROJECTS DESIGN	12/01/2007
DESIGNED: TERPKOS & SANTILLO PTY LTD 04/2005	AUTHORISED: *P.CALLEY MANAGER INFRASTRUCTURE PROJECTS	12/01/2007
DRAWN: TERPKOS & SANTILLO PTY LTD 04/2005	APPROVED: *D.BLAIR DIRECTOR INFRASTRUCTURE	15/01/2007

SPORTING FACILITIES

HIT-UP WALL
FOOTING, SLAB ON GROUND AND WALL
ELEVATION

STANDARD
SHEET 2 OF 3



**CITY OF WANNEROO
INFRASTRUCTURE**

FILE No. N/A	DRAWING No.	SHEET	REVISION	ORIGINAL DRG. SIZE
PROJECT No. N/A	TS30-8-1			A3