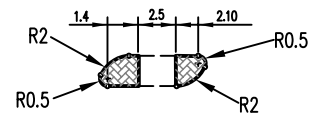
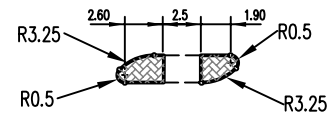


No	REVISION	BY	DATE	AUTH
0.	ISSUED	J.W.T.	8/2001	



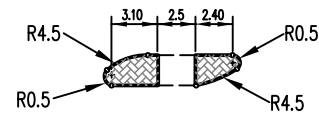
**ISLAND 7m**

LENGTH OF KERB: 14.7m  
AREA OF PAVING: 4.1m<sup>2</sup>



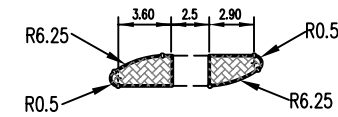
**ISLAND 8m**

LENGTH OF KERB: 16.2m  
AREA OF PAVING: 4.6m<sup>2</sup>



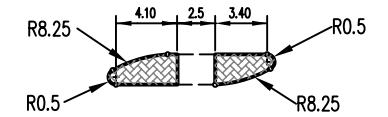
**ISLAND 9m**

LENGTH OF KERB: 18.6m  
AREA OF PAVING: 6.1m<sup>2</sup>



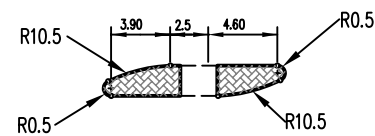
**ISLAND 10m**

LENGTH OF KERB: 20.6m  
AREA OF PAVING: 7.2m<sup>2</sup>



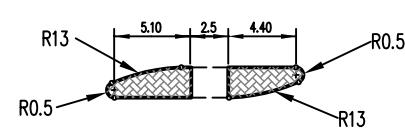
**ISLAND 11m**

LENGTH OF KERB: 22.5m  
AREA OF PAVING: 8.3m<sup>2</sup>



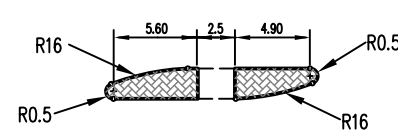
**ISLAND 12m**

LENGTH OF KERB: 24.4m  
AREA OF PAVING: 9.5m<sup>2</sup>



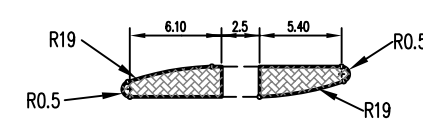
**ISLAND 13m**

LENGTH OF KERB: 26.4m  
AREA OF PAVING: 10.5m<sup>2</sup>



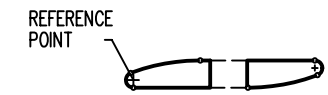
**ISLAND 14m**

LENGTH OF KERB: 28.4m  
AREA OF PAVING: 11.7m<sup>2</sup>

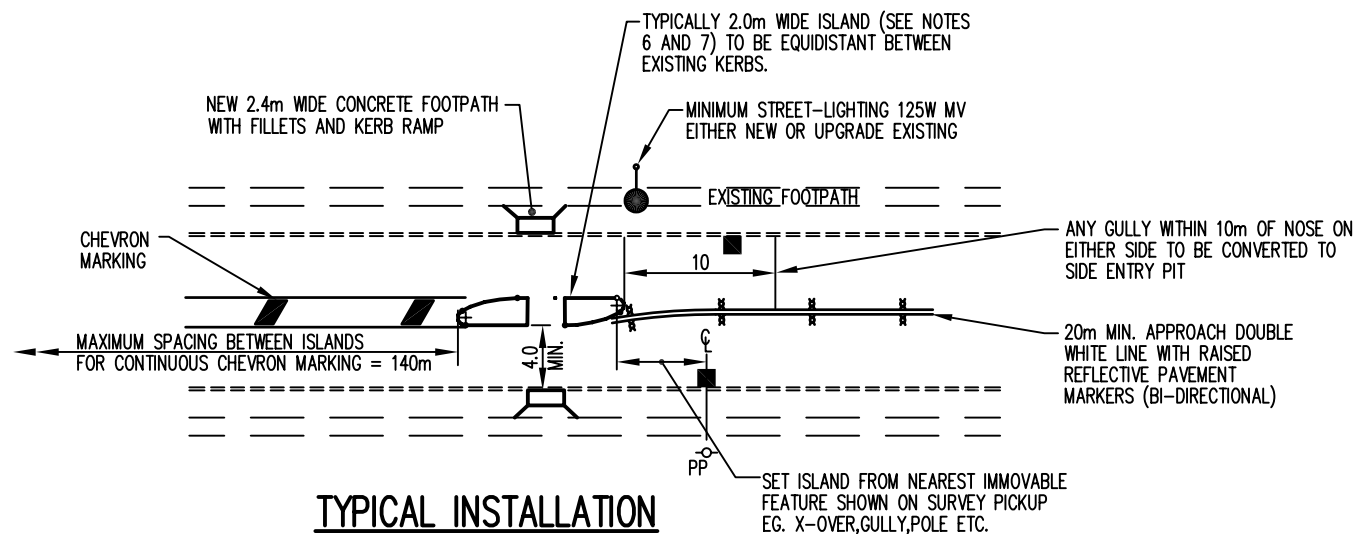
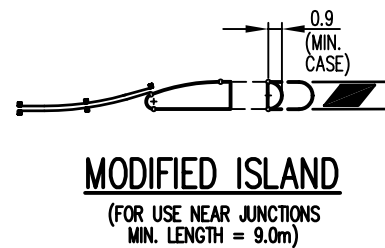


**ISLAND 15m**

LENGTH OF KERB: 30.3m  
AREA OF PAVING: 12.8m<sup>2</sup>



**SETOUT**



\* INDICATES SIGNATURES ON ORIGINAL ISSUE OF DRAWING.

**NOTES**

- FOR SPECIFIED PEDESTRIAN CROSSINGS (NOT GUARD CONTROLLED) INSTALL HAND RAILS. REFER TO DRG. NO. TS09-6
- FOR GUARD CONTROLLED CROSSING LINEMARKING, HANDRAIL AND PARKING PROHIBITION LAYOUT REFER TO MRWA STANDARD DRAWING.
- PREFERRED LENGTH FOR ISLANDS IS 10m OR GREATER.
- ISLANDS LESS THAN 10m ONLY TO BE USED AS PART OF AN OVERALL TREATMENT INCORPORATING OTHER ISLANDS AND PAVEMENT MARKINGS
- LONGER LENGTH ISLANDS TO RELATE TO ROAD GEOMETRY I.E. ISLAND TO FOLLOW ROAD CENTRELINE, CURVES ETC. AND BE COMPATIBLE WITH CREST LOCATIONS
- WIDTH OF ISLANDS - 2.0m DESIRABLE  
- 1.5m MINIMUM  
- 1.2m ABSOLUTE MINIMUM (NOT FOR PEDESTRIAN CROSSING)
- ALL ABOVE ISLAND DIMENSIONS BASED ON 2.0m WIDE ISLANDS
- MAXIMUM DISTANCE BETWEEN ISLANDS FOR CONTINUOUS PAINTED MEDIAN IS 140 METRES.

DATUM: N/A	GRID: N/A	SURVEYOR: N/A	DESIGNED: C.O.W	APPROVED: * T. QUINN 8/8/2001 COORDINATOR
SCALE: 1:500	SCALE IN METRES		DRAWN: C.O.W	APPROVED: * R. KORENHOF 8/8/2001 MANAGER INFRASTRUCTURE
DESIGN ARCHIVE:	DESIGN CHECKED:		DESIGNER	APPROVED: * D. BLAIR 8/8/2001 DIRECTOR TECHNICAL SERVICES
DRAWING ARCHIVE: *FINAL STANDARD DRAWINGS	STANDARDS/DOCUMENT CONTROL: * J. TRIMMER 8/8/2001 INFRASTRUCTURE TECHNICAL OFFICER			

**TRAFFIC MANAGEMENT  
PEDESTRIAN REFUGE ISLAND  
SET OUT DETAILS**

STANDARD

<b>CITY OF WANNEROO TECHNICAL SERVICES</b>				
<b>INFRASTRUCTURE SERVICES</b>				
FILE No.	DRAWING No	SHEET	REVISION	ORIGINAL DRG. SIZE
	<b>TS 11 - 1 - 0</b>			<b>A3</b>