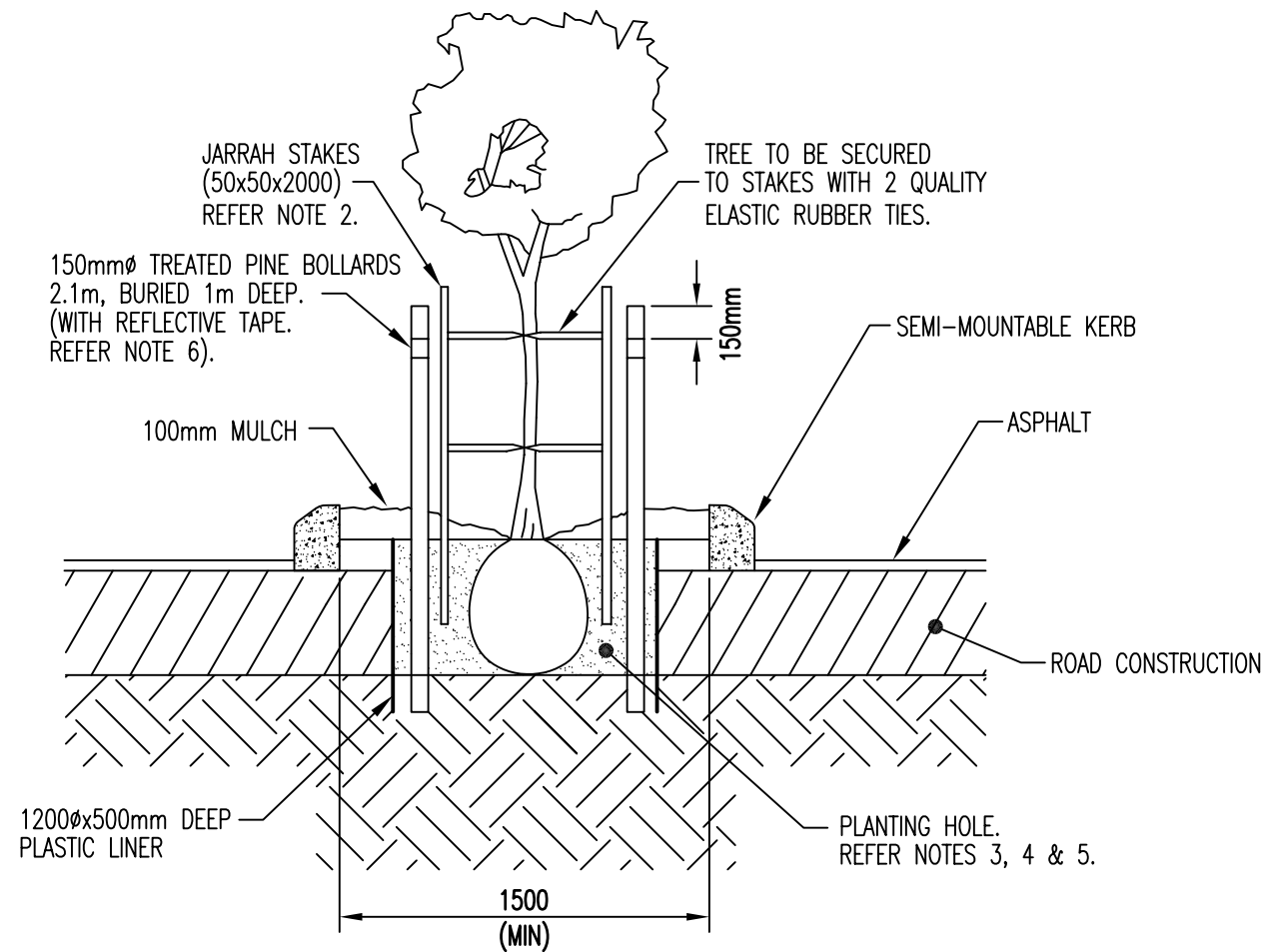


No	REVISION	BY	DATE	AUTH
0.	ISSUED	J.W.T.	2/2002	



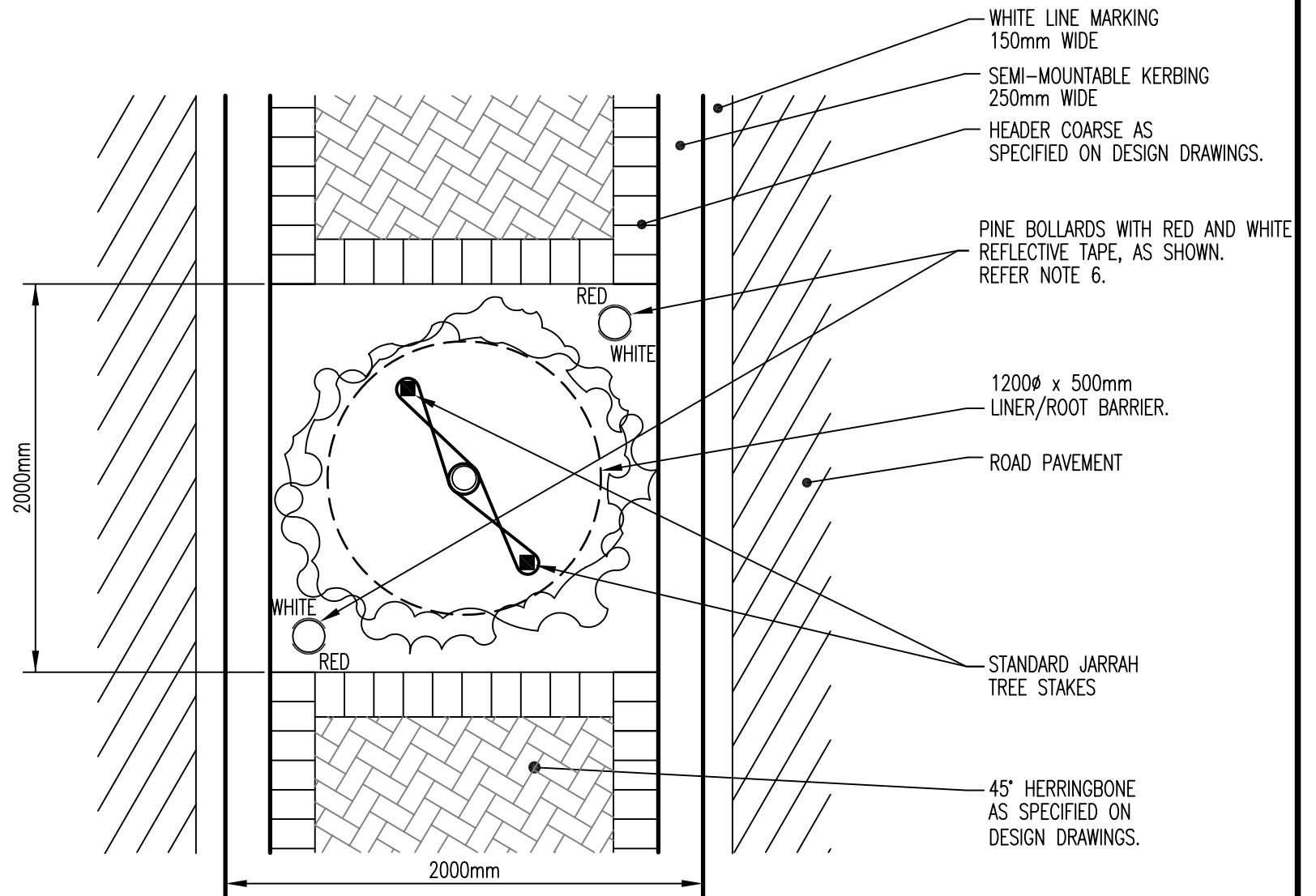
**ELEVATION OF TYPICAL TREE WELL DETAIL IN MEDIAN ISLAND**

SCALE N.T.S

**NOTES:**

- WHERE MEDIAN ISLANDS ARE CONSTRUCTED IN EXISTING PAINTED MEDIANS, TREE WELL WIDTH TO SUIT EXISTING WHITE LINING. EG. 1800 WIDE.
- ENSURE THAT TOPS OF STAKES FINISH JUST BELOW THE LOWEST BRANCH. BRANCHES LOWER THAN 1000mm SHOULD BE PRUNED CLOSE TO THE LEADING STEM.
- PLANTING HOLE TO BE THREE TIMES THE DIAMETER OF THE ROOTBALL, BACKFILLED WITH 50% SITE SOIL AND 50% TOPSOIL. TOPSOIL SHALL COMPLY WITH AS 4419 - SOILS FOR HORTICULTURAL PURPOSES.
- PLANTING MIX IS NOT TO BE ADDED BENEATH ROOTBALL. BASE OF PLANTING HOLE SHALL SUPPORT THE BASE OF THE TREE'S ROOTBALL.
- PLANTING HOLE TO BE BACKFILLED AND WATERED IN TO LEAVE A FINISHED SURFACE LEVEL FLUSH WITH THE SURROUNDING GROUND LEVEL.
- REFLECTIVE TAPE TO BE AS 1743 CLASS 2, 100mm WIDE.

\* INDICATES SIGNATURES ON ORIGINAL ISSUE OF DRAWING.



**PLAN OF TYPICAL TREE WELL DETAIL IN MEDIAN ISLAND**

SCALE N.T.S

DATUM: N/A	GRID: N/A	SURVEYOR: N/A	DESIGNED: C.O.W	APPROVED: * R. KORENHOF 20/2/2002
SCALE: DIAGRAMMATIC			DRAWN: C.O.W	COORDINATOR: * R. KORENHOF 20/2/2002
DESIGN ARCHIVE:			DESIGN CHECKED: I /2002	MANAGER INFRASTRUCTURE
DRAWING ARCHIVE: *FINAL STANDARD DRAWINGS			DESIGNER	APPROVED: * D. BLAIR 20/2/2002
			STANDARDS/DOCUMENT CONTROL: * J. TRIMMER 20/2/2002	DIRECTOR TECHNICAL SERVICES
			INFRASTRUCTURE TECHNICAL OFFICER	

**TRAFFIC MANAGEMENT  
TREE WELL IN KERBED MEDIAN ISLAND**

LOCALITY STANDARD

**CITY OF WANNEROO  
TECHNICAL SERVICES**



**INFRASTRUCTURE SERVICES**

FILE No.	DRAWING No	SHEET	REVISION	ORIGINAL DRG.SIZE
	<b>TS 11 - 4 - 0</b>			<b>A3</b>