



Waste Guide



Wheelie good habits: Give your garbo the gift of the gap!

Please place your bins on the verge by 6am on your collection day.

To ensure they can be emptied, keep bins:

- at least 1m apart
- at least 1m clear of cars, mailboxes, fences, street signs and power poles
- at least 1m from trees & clear of the tree canopy
- under 70kg.

Your red-lid waste bin is collected weekly.

Yellow-lid recycling and green-lid garden organics bins are collected on alternating fortnights.



Putting your bins out

Quick reference guide



General waste bin

- ✓ Food waste
 - ✓ Unrepairable clothing
 - ✓ Nappies and sanitary items
 - ✓ Shredded or dirty paper
 - ✓ Dirty cardboard (flattened)
 - ✓ Animal droppings
-



Recycling bin

- ✓ Aluminium and steel cans
 - ✓ Glass bottles and jars
 - ✓ Plastic bottles and containers
 - ✓ Clean cardboard (flattened)
 - ✓ Paper (not shredded)
-



Garden organics bin

- ✓ Grass cuttings
- ✓ Leaves and flowers
- ✓ Prunings and small branches
- ✓ Weeds, sticks and twigs

What can go in ✓
your general
waste bin
Collected weekly



Food waste and soft plastics



Unrepairable clothing and toys



Nappies and sanitary items



Shredded paper and
dirty paper/dirty cardboard



Animal droppings and bedding



General Waste

What can go
in your garden
organics bin
Collected fortnightly



Grass cuttings



Prunings and small branches



Leaves and flowers



Weeds, sticks and twigs



**What can't go X
in your garden
organics bin**
Collected fortnightly



No food waste



No animal droppings and bedding



No glass or ceramics



No building materials



No bags, keep it loose



**What can go ✓
in your recycling
bin**

Collected fortnightly



Paper

Clean and no shredded paper



**Plastic bottles and
containers**

Rinsed and lids removed



Glass bottles and jars

Rinsed and lids removed



Cans

Steel and aluminium



Cardboard

Flattened and clean



**What can't go X
in your recycling
bin**

Collected fortnightly



No meat trays



No soft plastics



No nappies



No food or garden organics



**No aerosols, electronic waste
or gas bottles**





Drop-off facilities

Some waste is just too big to fit in your kerbside bins and some waste doesn't belong in any household bins.

In these circumstances, there are a number of alternative disposal options available for things like e-waste, household hazardous waste and problematic waste.

Tamala Park

1700 Marmion Avenue, Mindarie.

Open 7 days from 9am-4pm.

mrc.wa.gov.au

Wangara Greens Recycling Facility

70 Motivation Drive, Wangara.

Open weekends and public holidays from 8am-4.45pm.

wanneroo.wa.gov.au

Balcatta Recycling Centre - 238 Balcatta Road, Balcatta. Open 7 days from 8am-4pm.

stirling.wa.gov.au

	Tamala Park	Wangara Green Rec. Facility	Balcatta Rec. Centre
Aerosols	✓	✗	✓
Asbestos	✗	✗	✗
Batteries (home/car)	✓	✓	✓
Bulk household waste	✗	✗	✗
Cardboard	✓	✓	✓
Cooking oil	✗	✓	✗
Engine/motor oil (daily limits apply)	✓	✓	✓
E-waste	✓	✗	✓
Flammable and flares	✓	✗	✓
Compact fluoro globes	✓	✓	✓
Gas cylinders	✓	✗	✓
Household chemicals/poisons	✓	✗	✓
Paint	✓	✗	✓
Printer cartridges	✓	✓	✓
Mattresses	✗	✗	✗
Polystyrene	✓	✓	✓
Mobile phones	✓	✓	✓
Scrap metal	✓	✓	✓
Syringes (In approved yellow syringe container)	✗	✗	✓
Tyres	✗	✗	✗
Whitegoods	✓	✗	✗
Vapes (low amounts)	✗	✗	✓ Trial

Contact facilities directly to clarify acceptance of specific items.
The table is a general guide only and was correct at time of printing.

Drop-off facilities



Problem waste

In the City of Wanneroo, we focus on getting waste to the right place, and some waste doesn't belong in any of our kerbside bins.

By taking problem waste to drop-off centres, you help prevent the pollution of groundwater and the risk of waste truck fires.

The City hosts drop-off days throughout the year so you can safely dispose of problem items like tyres, e-waste, cardboard and polystyrene.

You can also drop off problem, hazardous and excess waste at a number of facilities.

Turn to the next page (Drop-off facilities) to see what is accepted and where.



Never bin a battery

Or anything with a battery inside



Take them to your nearest
drop off location





Littering and illegal dumping

We love the land we live on.

Help keep it clean by reporting illegal dumping to:

- The City's Rangers on **9405 5000** or **1300 138 393** after hours

- The Department of Water and Environmental Regulation's illegal dumping hotline **1300 784 782**

- Keep Australia Beautiful Litter Reporter Scheme - when reporting dumping or littering from a vehicle
kabc.wa.gov.au/report-littering

Bookable verge collections

Convenient bulk junk and greens collections are now just a click or call away with the City's new bookable verge collection service.

Every financial year you can book:

1 x bulk junk waste, up to 3m³

1 x bulk green waste, up to 3m³

1 x mattresses, up to 3 items

1 x white goods, up to 4 items

1 x e-waste (electronic) up to 6 items

For more information on how to use the new service, how to place items on your verge, what can and cannot be collected and rehoming or donating items that are in good condition, visit wanneroo.wa.gov/waste

1x



1x



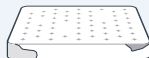
1x



1x



1x



Bookable verge collections

Wangara Greens Recycling Facility vouchers

Too much waste for your verge collection?

Ratepayers can dispose of clean greens for free at the Wangara Greens Recycling Facility, with four green waste tipping vouchers issued with annual rates notices in August.

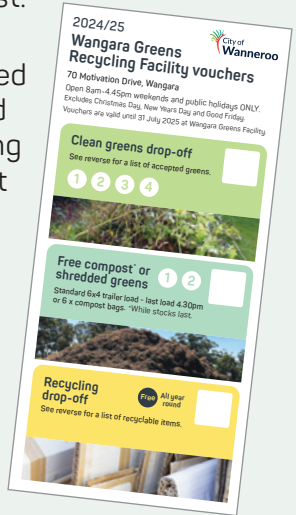
To redeem a voucher, simply bring your rates notice (printed or digital copy) to be scanned on entry to the facility, making sure printed vouchers are not damaged and the QR code is visible.

If you're a tenant, contact your landlord or property manager about the vouchers for your property.

Each voucher allows for the disposal of a standard 6x4 trailer, or vehicle with up to 500kg of clean greens for free – only at the Wangara Greens Recycling Facility.

- ✓ Small prunings/grass clippings
- ✓ Small stumps
- ✓ Branches up to 1.5 metres long

-
- ✗ No sand, soil, turf, rocks, building materials or bricks
 - ✗ No processed timber, sleepers or bamboo screens
 - ✗ No large tree stumps





Free compost* or shredded greens

Did you know you can collect two standard 6x4 trailers of shredded greens (mulch) or six bags of compost* from our Wangara Greens Recycling Facility?

Adding mulch or compost not only beautifies your garden, it also reduces evaporation, saves water and can help reduce weeds!

*While stocks last



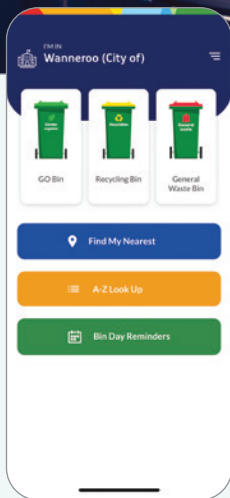
Recycle Right

Not sure what goes where?

The free Recycle Right app has the answers to your questions, from what can and can't go in each bin, to the location of your nearest recycling centre or drop-off point for items that can't go in your kerbside bins.

You'll also find tips and advice to help you live more sustainably.

recycleright.wa.gov.au



recycleright.wa.gov.au



Waste education

Did you know the City has a Waste Education team?

They organise activities to encourage and inspire locals to introduce the best possible sustainable waste practices in their everyday lives to benefit the wider community.

From coordinating visits to local facilities and running pop up community stands to creating a waste sorting game available in 11 different languages, the team is passionate about helping residents better manage waste and live more sustainably!

Check out the City's event listings for workshops and events throughout the year.

Head to wanneroo.wa.gov.au/events