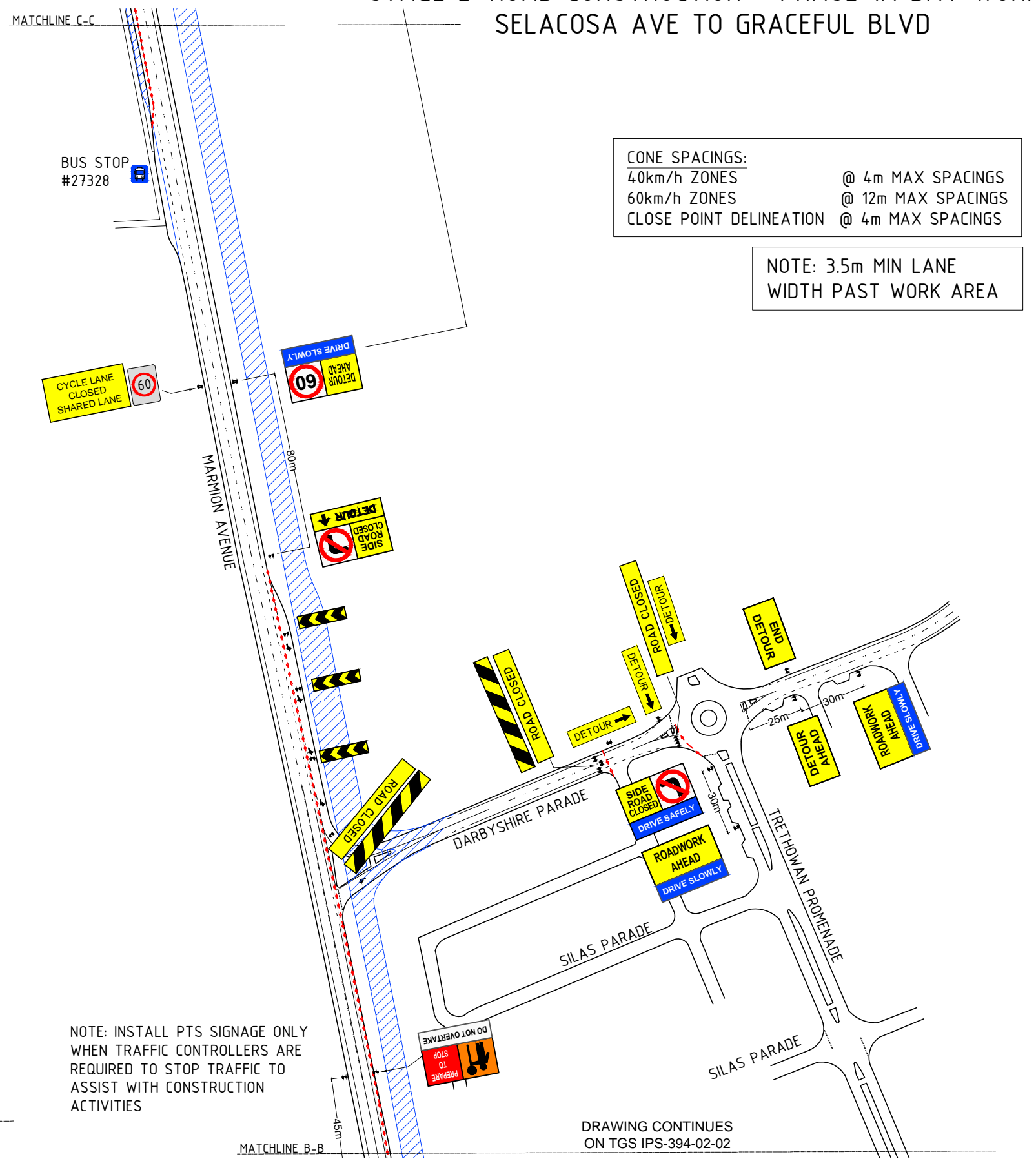
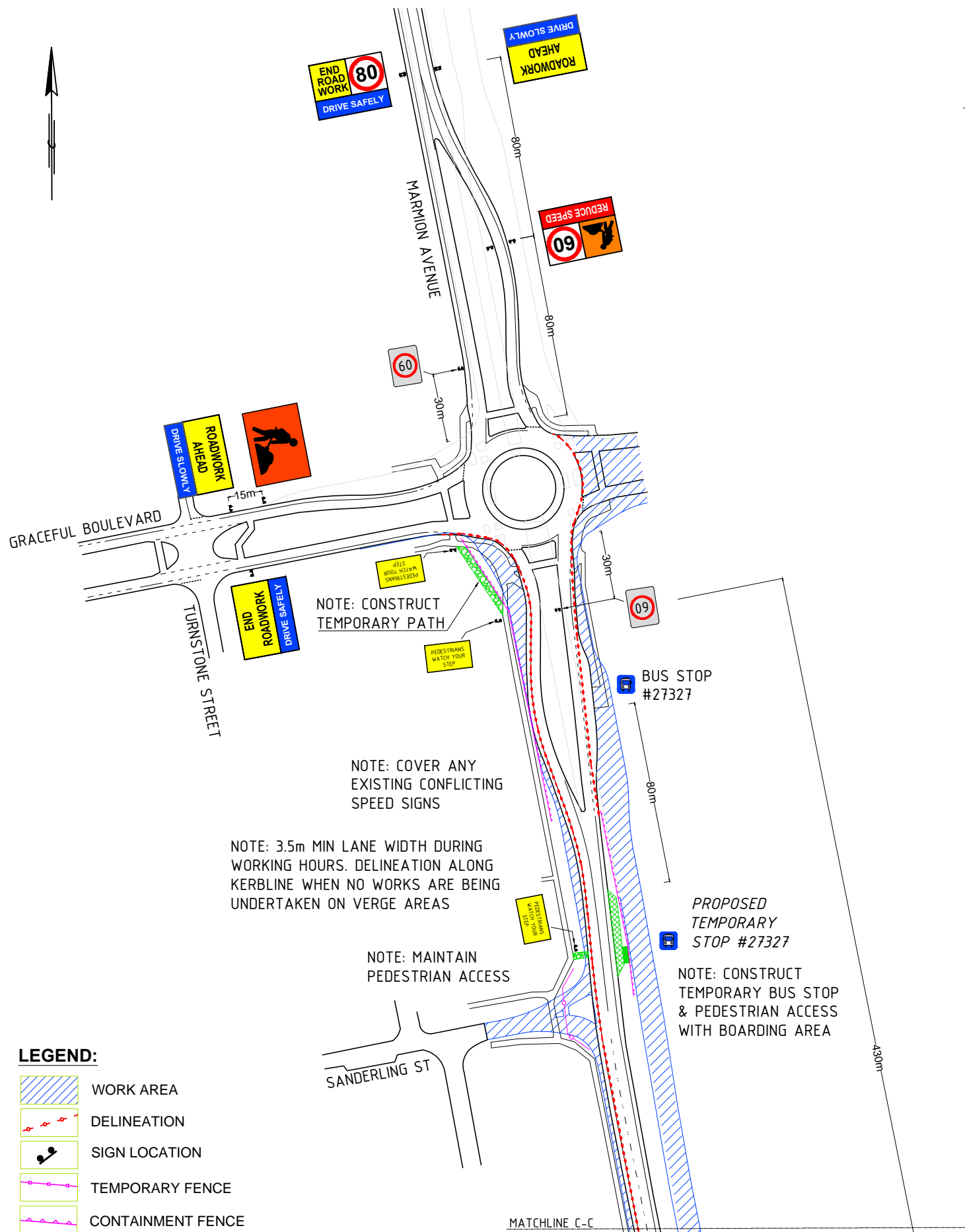


MARMION AVENUE DUPLICATION

STAGE 2: ROAD CONSTRUCTION - PHASE 1A DAY WORKS SELACOSA AVE TO GRACEFUL BLVD



DRAWING CONTINUES ON TGS IPS-394-02-02



CLIENT: RJV CIVIL INFRASTRUCTURE	LOCATION: MARMION AVENUE, ALKIMOS	DRAWN BY: PAUL ASHFOLD KTS-AWTM-16-03742-02	SIGNED: 	TITLE: MARMION AVENUE DUPLICATION
CONTACT: SEAN ROBINSON 0405 461 367	POSTED SPEED: 80km/h	WORK SITE SPEED LIMIT: 40km/h	DESIGNED BY: PAUL ASHFOLD KTS-AWTM-16-03742-02	SIGNED:
ROAD AUTHORITY: CITY OF WANNEROO	DATE: 13/03/2019	SCALE: N.T.S	CHECKED BY: KYLE HARTLEY STAP-AWTM-17-00626-02	SIGNED:
			DRAWING NUMBER: IPS-394-02-02A	REVISION: 0
				SIZE: A3