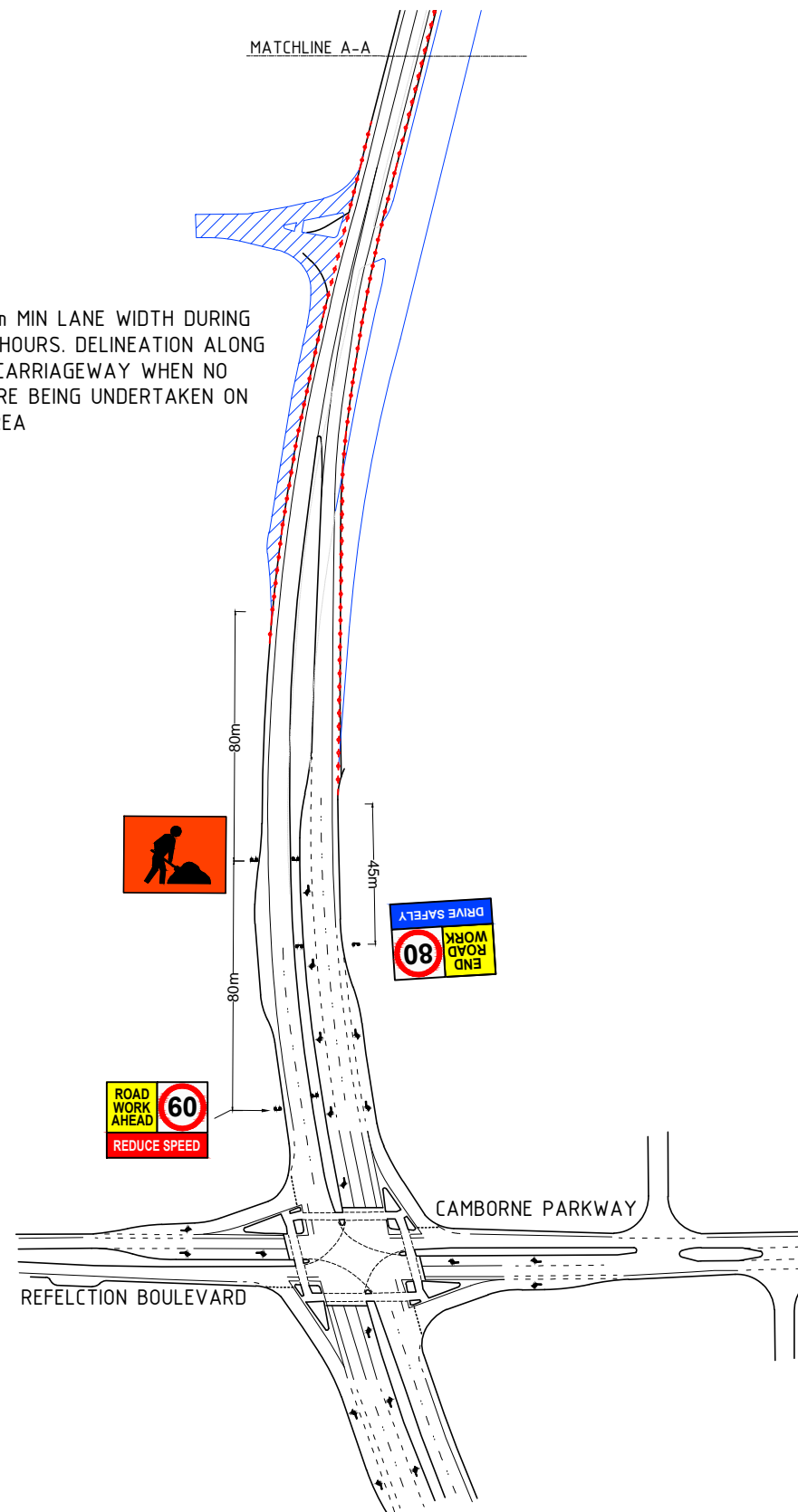


MARMION AVENUE DUPLICATION

STAGE 2: ROAD CONSTRUCTION - PHASE 1B DAY WORKS SELACOSA AVE TO GRACEFUL BOULEVARD

NOTE: 3.5m MIN LANE WIDTH DURING WORKING HOURS. DELINEATION ALONG EDGE OF CARRIAGEWAY WHEN NO WORKS ARE BEING UNDERTAKEN ON VERGE AREA



NOTE: REMOVE OR COVER CONFLICTING LINE MARKINGS INSTALL TRRPM's AS CENTRE LINE DELINEATION

NOTE: CREATE SMALL SEPARATION ISLAND AT INTERSECTION

NOTE: REMOVE OR COVER CONFLICTING LINE MARKINGS INSTALL TRRPM's AS CENTRE LINE DELINEATION

CYCLE LANE CLOSED SHARED LANE

MODIFIED ROAD LAYOUT

PROTECTIVE MESH WITH STOP

NOTE: COVER EXISTING SPEED SIGN

NOTE: WIDEN CARRAGEWAY TO PROVIDE FOR 2 x 3.5m MIN TRAFFIC LANES PAST END OF TRAFFIC ISLAND

NOTE: 2 x 4.25m MIN TRAFFIC LANES ON APPROACH TO ROUNDABOUT

NOTE: COVER EXISTING SPEED SIGN

NOTE: MAINTAIN ACCESS TO BUS STOP

NOTE: 3.5m MIN LANE WIDTH PAST WORK AREA

CONE SPACINGS:
40km/h ZONES @ 4m MAX SPACINGS
60km/h ZONES @ 12m MAX SPACINGS
CLOSE POINT DELINEATION @ 4m MAX SPACINGS

DRAWING CONTINUES ON TGS-394-02-03A

LONGSTAFF AVE

DOBELL ROAD

SANTORINI PROMENADE

HOLLINGTON BLVD

LEGEND:

- WORK AREA
- DELINEATION
- SIGN LOCATION
- TEMPORARY FENCE
- CONTAINMENT FENCE