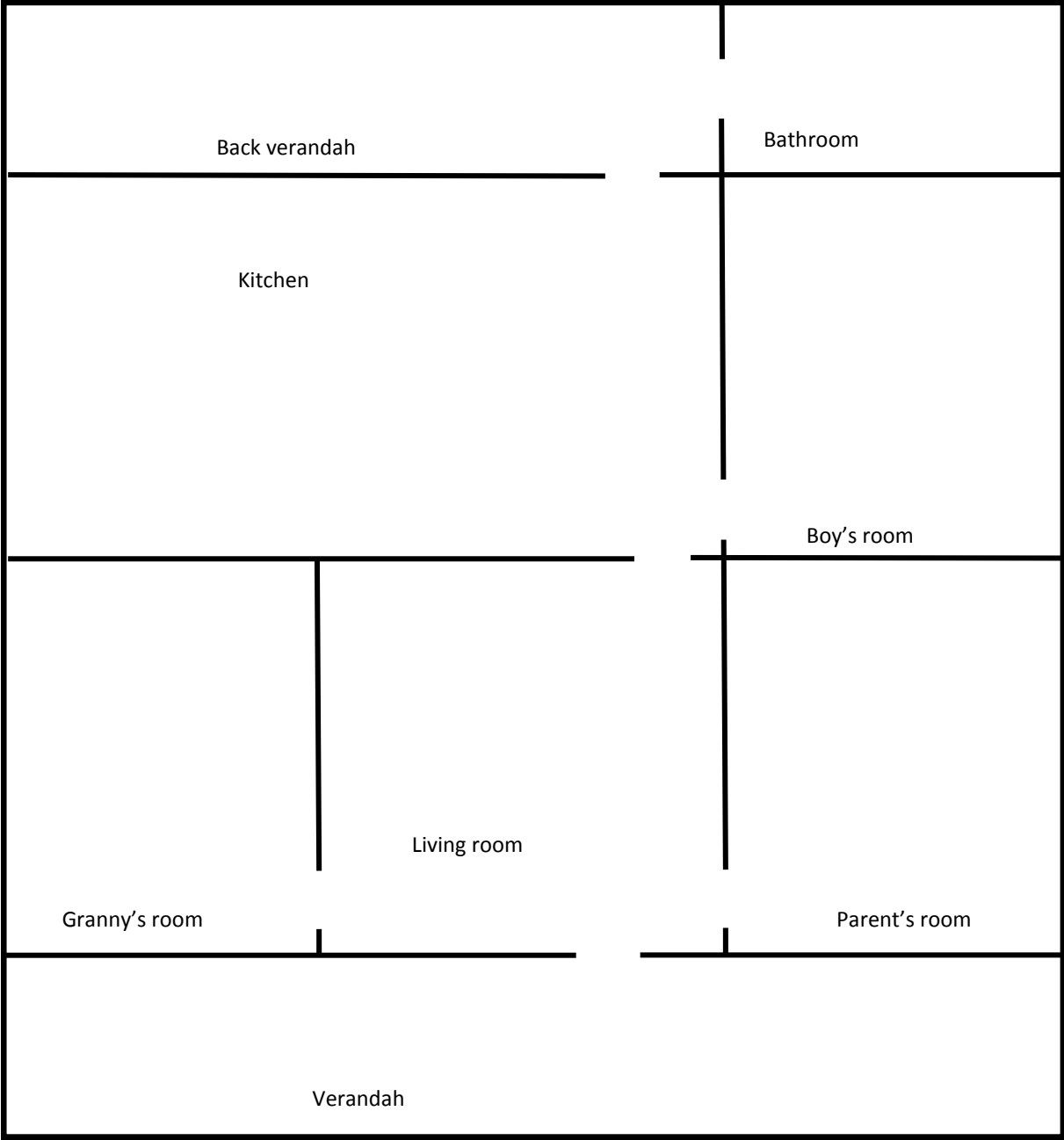


Dunny

Old washhouse

**Cockman House  
floorplan**



## Activity suggestions using the floorplan

### Prediction activity:

1. Show students the floorplan of Cockman House. Brainstorm the kind of furniture that might have been in each room. Students can either draw or label what they think will be in each room. Discuss (lack of) electricity; (lack of) running water and what this might mean.
2. Play the [virtual tour of Cockman House](#).
3. Students can add in additional furniture they observe.

### Observation and discussion:

- Compare furniture from the past and present. Discuss furniture which looks *similar* and furniture which looks *different*.
- Discuss electricity and lighting: What kinds of everyday items do we use in our house which need electricity? Brainstorm what might be in the different rooms which need electricity if this were a modern house (e.g. kitchen: fridge? Bedrooms: lights? Google Home?) Go through the virtual tour and write in/draw household items in each room where we would use electricity today (e.g. Kitchen: Coolgardie Safe; ice chest; Living Room: lamp).

[Cockman House virtual tour](#): See the 'Cockman House virtual tour' link on the webpage.

