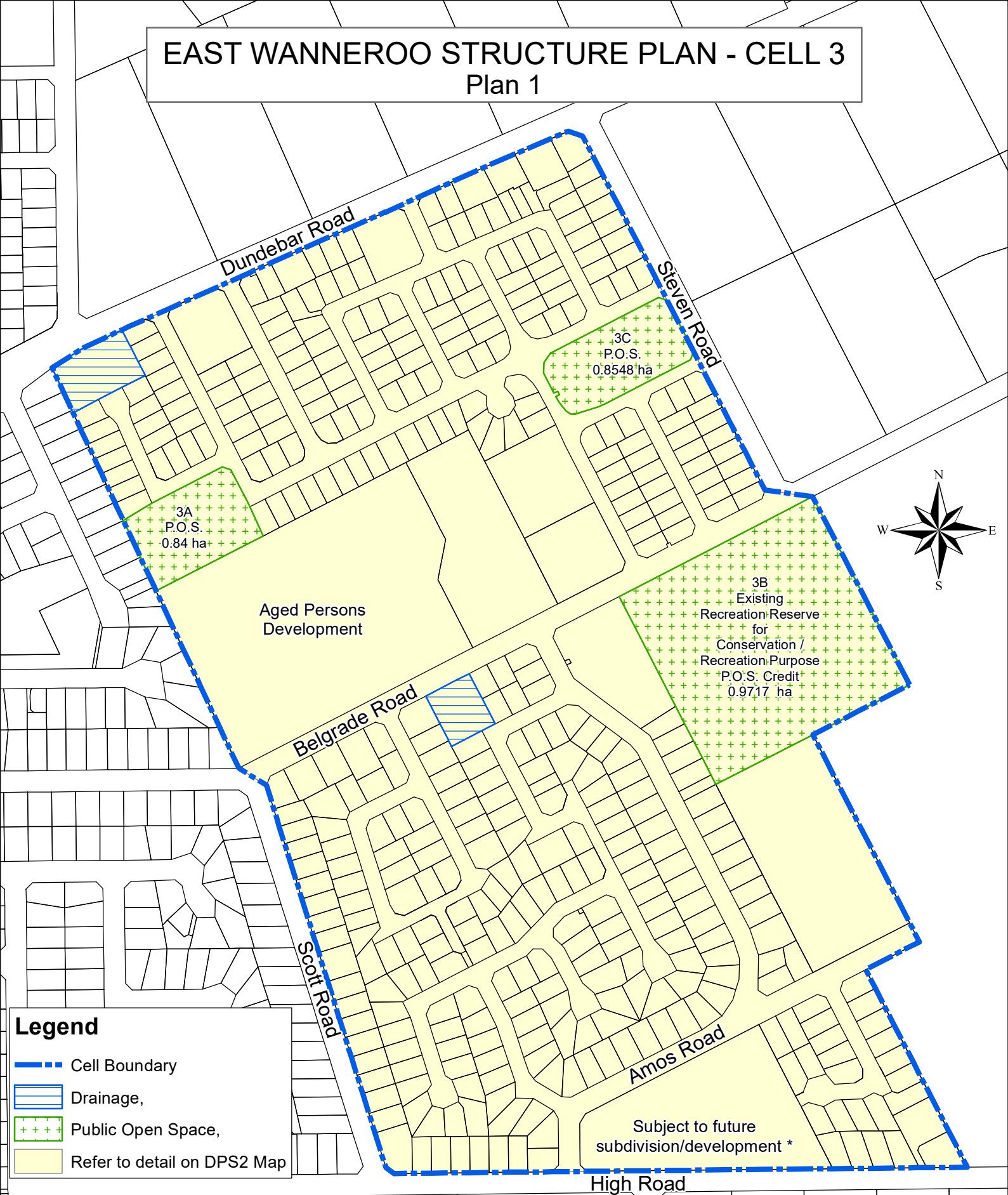


EAST WANNEROO STRUCTURE PLAN - CELL 3

Plan 1



Legend

- Cell Boundary
- Drainage,
- Public Open Space,
- Refer to detail on DPS2 Map

*Subdivision/development of this site should provide for:
a) an appropriate street network for internal and external connectivity for local vehicle/pedestrian movement, which will enable development to address and front the existing and proposed streets; and
b) an appropriate interface with existing residential development, in accordance with Liveable Neighbourhoods.

