

City of Wanneroo

Nature Passport



In partnership with  Nature Play^{WA}

Nature Passport



First name:

Age:

How to use this passport

This is your City of Wanneroo Nature Passport!

Use it to explore nature in the City of Wanneroo. Play, create, imagine, look closer and have some fun with your friends and family.

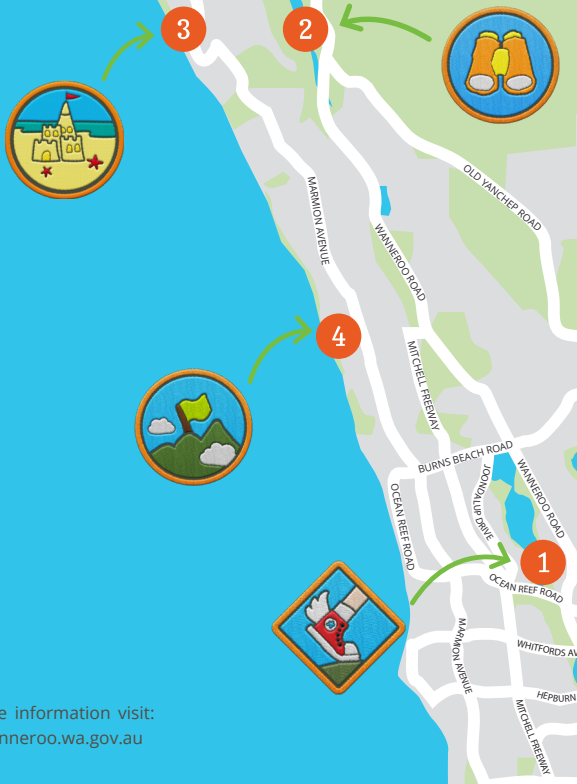
- Try new nature activities.
- Journal your escapades.
- Record the wildlife you come across.
- Tick off our list of '15 things to do'.

Flip forward to your **Activity Map** to see the six activity locations, then find the corresponding activity page and get stuck in!

Each of the activities can be done using the international Nature Passport app and there are over one hundred more to choose from.

Visit www.naturepassport.org to get started!

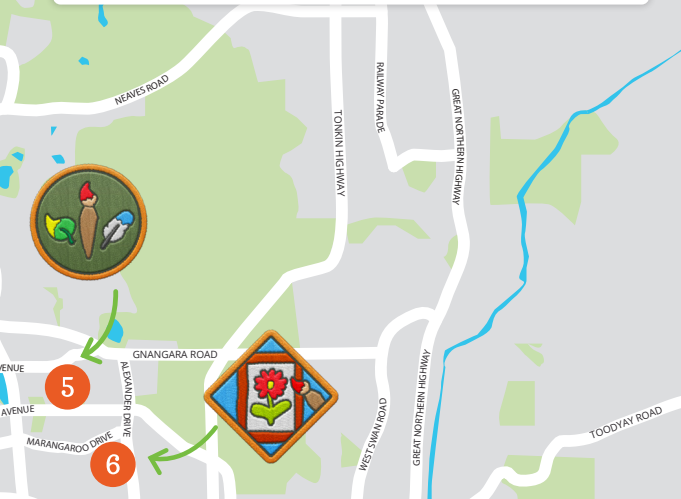
Activity Map



For more information visit:
www.wanneroo.wa.gov.au

Key

- | | |
|---|--|
| 1 Studmaster Park
<i>Obstacle Course</i> | 4 Mindarie Foreshore and Kinsale
Park Trail Head
<i>Plant Pose</i> |
| 2 Yanchep National Park
<i>You're a Scavenger!</i> | 5 Landsdale Park Conservation
Reserve
<i>Leaf Collector</i> |
| 3 Yanchep Lagoon
<i>Sand Angel</i> | 6 Koondoola Regional Bushland
<i>Listen Up</i> |



Activity 1: Studmaster Park

James Spiers Drive, Wanneroo



Adventurous



Over 1 hour



Move

Obstacle Course

Dream up your very own obstacle course at Studmaster Park!

Plan out where the start and finish will be, and use the playground elements (and nature!) to design a set of obstacles.

Get some ideas on the opposite page, and tick off the obstacles you include.

Have fun racing through your obstacle course with friends.

Pro Tip! Check out the lookout tower for a view of the surrounding wetlands!.

Journal

Draw, take notes and fill in the blank space!

My obstacle course has...

- ☐ Jumping
- ☐ Limbo-ing
- ☐ Crawling
- ☐ Weaving
- ☐ Hopping
- ☐ Balancing

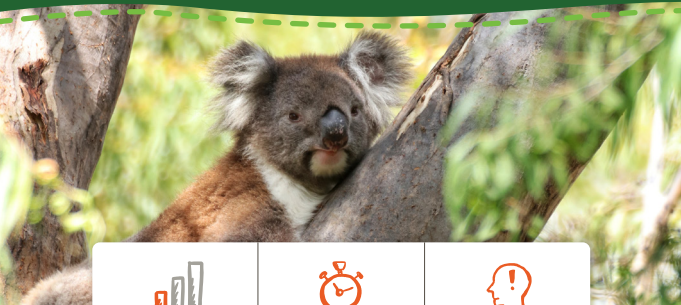


Safety first! Keep safety in mind when designing your course, and have a grown-up sign off before your test run.

Visit app.naturepassport.org (Backyard Adventure Pack) to complete this activity and many more!

Activity 2: Yanchep National Park

Yanchep Beach Road, Yanchep



Beginner



30 to 45 minutes



Observe

You're a Scavenger!

Create your own nature scavenger hunt.

Write a list of natural objects and animals to search for. You can write down shapes, colours, or specific items or wildlife.

Search high and low for the items on your list as you explore Yanchep National Park.

Did you discover any other cool items that weren't on your list?

Be kind to living things. Try to collect items off the ground.

Note: Entry fees to Yanchep National Park apply.

Journal

Record your findings!



Add to the list below for your scavenger hunt items.

My Scavenger Hunt:

☐ Something brown

☐ A rock

☐ A koala

☐ A kangaroo

☐ _____

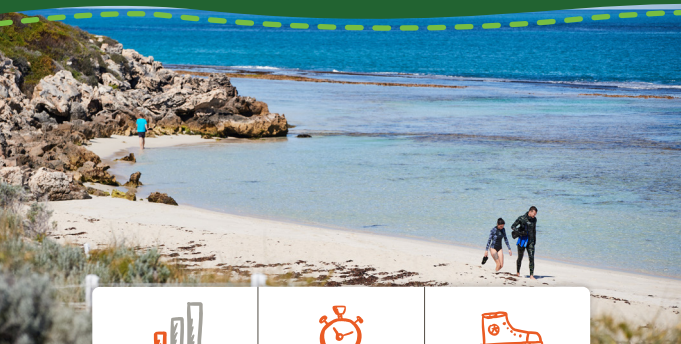
☐ _____

☐ _____

Visit app.naturepassport.org (Launch Pack) to complete this activity and many more!

Activity 3: Yanchep Lagoon

Brazier Road, Yanchep



Beginner



15 mins or less



Move

Sand Angel

You've probably heard of "snow angels" before, but have you ever made a "sand angel"?

Visit Yanchep Lagoon and look for a good patch of sand. Lay down and sweep your arms and legs back and forth to make an angel imprint. How many sand angels can you make?

Decorate your best sand angel with rocks, leaves, twigs, shells or seaweed.

Pro Tip! Try snorkelling in the shallow, crystal clear waters.

Journal

Record your findings!



Number of sand angels

I made: _____.

Angels aren't the only characters you can make in the sand. Choose a different character or creature like:

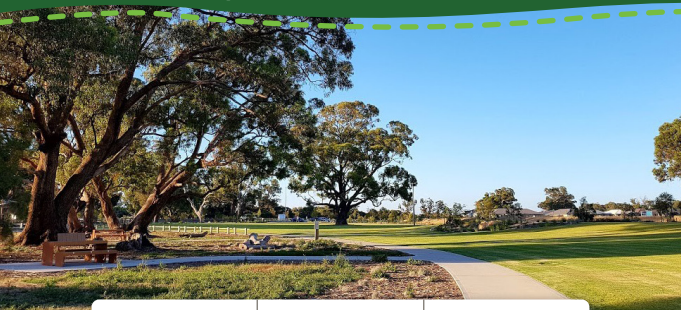
- ☐ A dinosaur
- ☐ A mermaid
- ☐ A dragon
- ☐ A troll

Safety first! Scan the area carefully and remove anything sharp or spiky.

Visit app.naturepassport.org (A Day at the Beach Pack) to complete this activity and many more!

Activity 4: Mindarie Foreshore and Kinsale Park Trail Head

Quinns Road, Mindarie



Beginner



15 mins or less



Move

Plant Pose

Welcome to Mindarie Foreshore, and the Kinsale Park Trail Head.

This [*small trail*](#) will introduce you to a range of coastal plant communities and rare flora species.

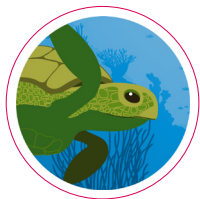
Wander around the Foreshore and Kinsale Park taking note of the different colours, smells, nuts, flowers, trees and shapes.

Find the most interesting looking plants and try copying their shape with your body.

Badge Stickers



Avatar Stickers



Journal

Record your findings!



Which one of these shapes did you see?

- ☐ Round
- ☐ Oval
- ☐ Cylindrical
- ☐ Triangular
- ☐ Branching

Visit app.naturepassport.org (Launch Pack) to complete this activity and many more!

Activity 5: Landsdale Park Conservation Reserve

Landsdale Road, Darch



Beginner



15 mins or less



Create

Leaf Collector

Create some leafy artwork!

Go on a leaf hunt and collect the leaves you like best.

Which is your favourite leaf and why?

Place a leaf underneath the next page in your booklet.

Use a pencil or the long side of a crayon to rub over it and watch how details from the leaf show up on your page.

Be kind to living things. Try to collect leaves off the ground, rather than picking from plants.

Journal

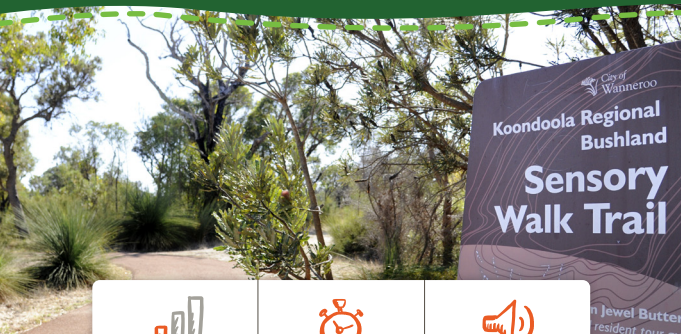
Draw, take notes and fill in the blank space!

Place your leaf underneath this page and use a pencil or crayon to rub over it!



Visit app.naturepassport.org (Everyday Explorer Pack) to complete this activity and many more!

Activity 6: Koondoola Regional Bushland *Waddington Cres, Koondoola*



Beginner



15 mins or less



Listen

Listen Up

Take a moment to listen to the world around you.

Try this trick... Make your hand into a “C”-shape then cup it behind your ear to make extra big “bat ears” that can catch even more sound waves!

Did you know... Bats have the best hearing of any mammal on earth. They rely on hearing to catch flying insects for food.

Fun fact! Koondoola Regional Bushland is a Bush Forever site, meaning the animals and plants in here are all protected!

Journal

Draw, take notes and fill in the blank space!

Draw and describe the sounds you've heard (e.g. loud, shrill, rhythmic...).



Sound 1

The sound was:

Sound 2

The sound was:

Visit app.naturepassport.org (Hone Your Senses Pack) to complete this activity and many more!

Museum and heritage houses

Buckingham House and the Old Wanneroo Schoolhouse

Free; open to the public every Sunday in autumn and spring from 10am to 12pm.

Built in the late 1800s, Buckingham House was home to John and Amelia Buckingham and their seven children and gives a fascinating insight into life in early Wanneroo.



Cockman House

Free; open to the public every Sunday in autumn and spring from 1pm to 4pm.

The beautiful and historic Cockman House is the oldest remaining house in the Wanneroo area.

The [Cockman House Play Trail](#) tells the story of James Cockman and his dream of building a family home to last generations.

We encourage you to come along, bring a picnic and take in everything that this fascinating home has to offer.

Perry's Paddock

Perry's Paddock is a part of the Yellagonga Regional Park. It is named after John (Jack) Perry who bred racehorses and held races on his property.

George Shenton Snr originally purchased the land in 1843. The ruins that are still visible are the remains of his old cottage and stables.



Wanneroo Regional Museum

Free; open Monday to Friday, 10am to 4pm; Saturdays: 10am to 1pm.

The Wanneroo Regional Museum researches, preserves and develops the City of Wanneroo's cultural heritage and history,

sharing the stories of the district.

The Museum provides children's activities, programs and memorable experiences that help connect people of all ages with the people and stories that came before.

Let's go on a Nature Safari!

Nature is all around you. How many species of plants, animals or fungi can you spot and record?

Start your safari!

Draw your species

Give it a name!

What is it doing?

Why do you think it likes this spot?

Create a digital record of your nature safari!

Develop observation and stealth skills as you go “hunting” for new species in the wild. In addition to this booklet, use the ‘Safari’ section of app.naturepassport.org to record your Safari animal sightings.



Draw your species

Give it a name!

What is it doing?

Why do you think it likes
this spot?



Draw your species

Give it a name!

What is it doing?

Why do you think it likes
this spot?

Let's go on a Nature Safari!



Draw your species

Give it a name!

What is it doing?

Why do you think it likes
this spot?



Draw your species

Give it a name!

What is it doing?

Why do you think it likes
this spot?

1. Visit the animals at Yanchep National Park ☐
2. Use the Play Trails app to explore the SS Alkimos shipwreck ☐
3. Visit Mary Lindsay Homestead and Lookout ☐
4. Explore Shorehaven Treasure Island Playground ☐
5. Try snorkeling at Yanchep Lagoon ☐
6. Visit the Crystal Caves at Yanchep National Park ☐
7. Have a picnic at Yanchep Lavender Farm ☐
8. Visit Discovery Park in Banksia Grove ☐
9. Explore the Yaberoo Budjara Heritage Trail ☐
10. Walk along the 10th Light Horse Trail ☐
11. Count the colours of nature at Wanneroo Botanic Gardens ☐
12. Visit Opportunity Playspace at Rotary Park ☐
13. Visit the Dinosaur Playground at Kingsway ☐
14. Visit the animals at Landsdale Animal Farm ☐
15. Explore the Girrawheen Community Garden ☐

Play, explore and learn outdoors!

The City of Wanneroo supports outdoor play for
healthier, happier children.

Nature Play WA is supported by



Department of
**Local Government, Sport
and Cultural Industries**

www.natureplaywa.org.au



Follow us on Facebook

The development of this booklet is funded by Lotterywest
through Nature Play WA's Digital Wellbeing Campaign.