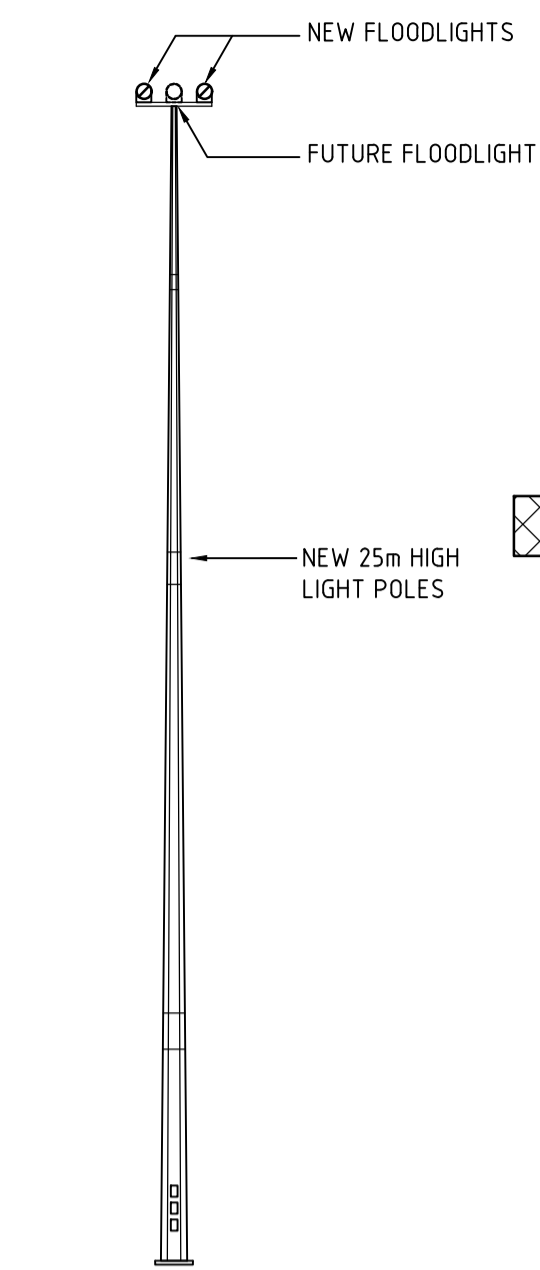
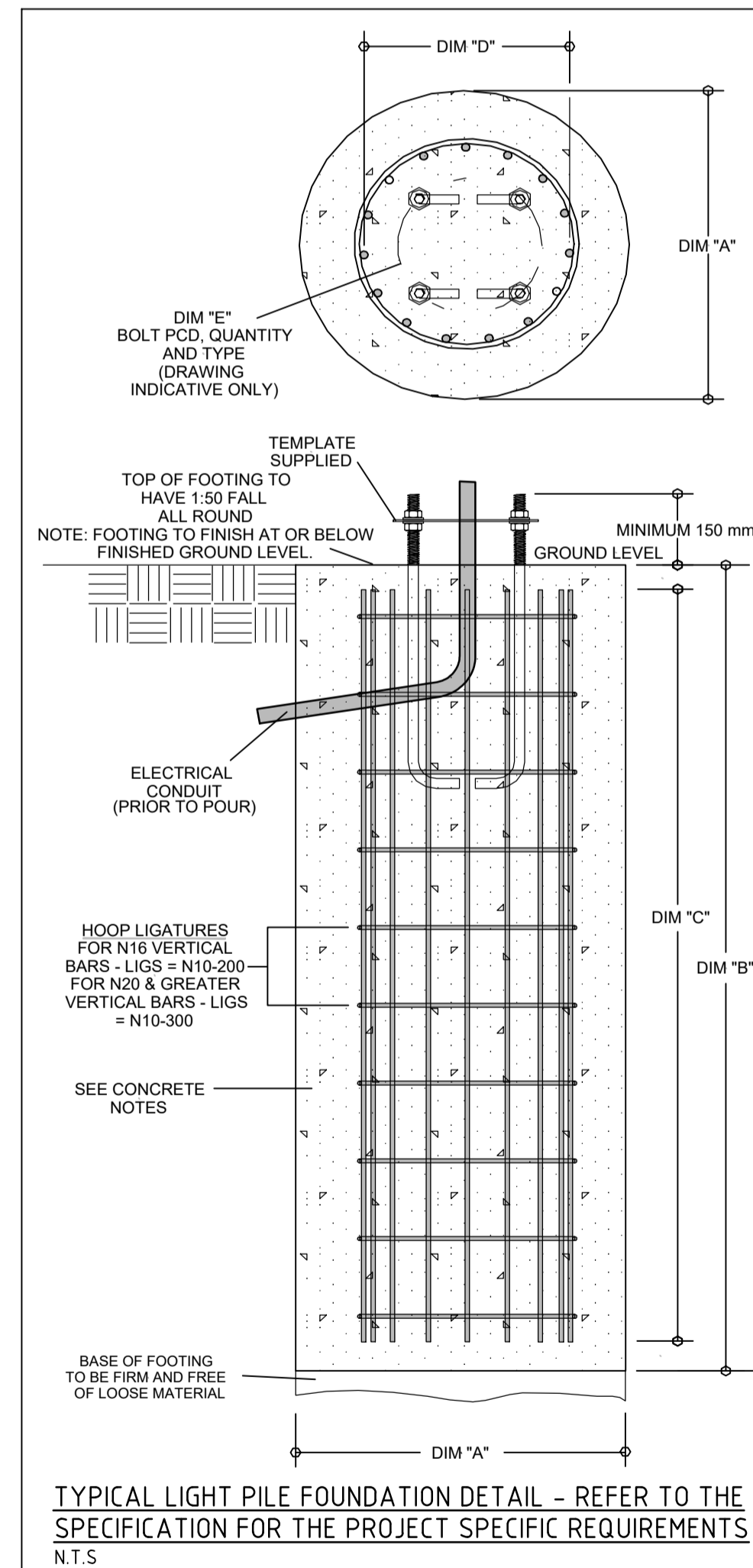


SITE PLAN - SPORTS LIGHTING LAYOUT
SCALE 1:500 @ A1



TYPICAL LIGHTING COLUMN
DETAIL (POLES 1-4)
SCALE N.T.S



TYPICAL LIGHT PILE FOUNDATION DETAIL - REFER TO THE SPECIFICATION FOR THE PROJECT SPECIFIC REQUIREMENTS
N.T.S

NOTES
1. DIRECTIONALLY DRILL UNDER PATHWAY TO ACCOMMODATE NEW CONDUITS.

LEGEND CONTINUED
HATCHING DENOTES EXTENT OF DIRECTIONAL DRILLING REQUIRED BENEATH EXISTING PLAYING FIELD

- LEGEND**
- WESTERN POWER POINT OF ATTACHMENT (PILLAR)
 - UNDERGROUND POWER CONDUIT
 - UNDERGROUND COMMUNICATIONS CONDUIT
 - INDICATIVE ROUTE OF EXISTING UNDERGROUND POWER CONDUIT
 - INDICATIVE ROUTE OF EXISTING UNDERGROUND COMMUNICATIONS CONDUIT
 - SITE MAIN SWITCHBOARD
 - DISTRIBUTION BOARD
 - NEW LIGHTING TOWER & TWO (2) PM1 FLOODLIGHTS & PROVISION FOR ONE (1) FUTURE FLOODLIGHT - REFER TO THE SPECIFICATION FOR DETAILS.
 - EXISTING LIGHT POLE TO BE REMOVED
 - AIMING 50Lux
 - POWER PIT - ACO CABLE MATE TYPE 66H WITH STEEL POWER LOK LID
 - COMMUNICATIONS PIT
 - EARTH PIT
 - 2C50 50mm HD UNDERGROUND COMMUNICATIONS CONDUIT x 2
 - 1P100 100mm HD UNDERGROUND POWER CONDUIT x 1
 - 1P63 63mm HD UNDERGROUND POWER CONDUIT x 1
 - 2P63 63mm HD UNDERGROUND POWER CONDUIT x 2
 - 1P50 50mm HD UNDERGROUND POWER CONDUIT x 1
 - 1S100 100mm SPARE HD UNDERGROUND POWER CONDUIT x 1
 - (E) DENOTES EXISTING SERVICE TO BE REMOVED
 - (R)
 - DPA DIGITAL POWER ANALYSER
 - kWHR WESTERN POWER MASTER METER
 - CIRCUIT BREAKER
 - ISOLATOR - LOAD SWITCHING
 - THREE PHASE & NEUTRAL
 - SINGLE PHASE & NEUTRAL
 - TWO PHASE & EARTH
 - COMBINED MCB/RCD
 - NORMALLY OPEN CONTACT 32AMP RATING
 - FUSE
 - SURGE DIVERTER
 - THREE PHASE RCD
 - THERMOSTAT
 - CONDENSATION HEATER
 - 240VAC TIME DELAY DEVICE WHERE 'n' DENOTES IDENTIFICATION
 - RELAY - 24VDC COIL 240V/5AMP CONTACT
 - 32A-4 POLE 32A 4-POLE CONTACTOR WITH 240V COIL
 - 240V RELAY COIL WHERE 'n' DENOTES IDENTIFICATION
 - EARTH ELECTRODE

ISSUED FOR TENDER
REFER TO REVISION COLUMN

FOCUS CONSULTING WA
PO BOX 138, LEEDERVILLE WA 6007
Ph: 0408 721 167
info@focuswa.com.au
FOCUS PROJECT No. 1920-002

CITY OF WANNEROO
ASSETS

PALOMA PARK
ELECTRICAL SERVICES
SPORTS FLOODLIGHTING
MARANGAROO

SOUTH OVAL SITE PLAN AND LEGEND
SHEET 2 OF 4

DRAWING No. SHEET REVISION ORIGINAL DRG. SIZE
3914-2-0 A1

No.	REVISION	BY	DATE	AUTH	No.	REVISION	BY	DATE	AUTH	SCALE: 5000 0 5000 10000 15000 20000 25000	DESIGNED: PAUL JEFFS	CHECKED: CAROLINE WHITE	AUTHORISED: MANAGER INFRASTRUCTURE CAPITAL WORKS	FINANCE CODE: PR-4214	FNO No.: 19092
0	ISSUED FOR TENDER	PJ	31/08/20	PJ						1:500	DESIGNER: PAUL JEFFS	COORDINATOR FACILITY PROJECTS: 16/12/19	MANAGER INFRASTRUCTURE CAPITAL WORKS	PR-4214	19092
										LOCAL LOCAL	CHECKED: SHARLINA MORSETH	CHECKED: SHANE SPINKS	MANAGER INFRASTRUCTURE CAPITAL WORKS	20/192040	37406
											PROJECT MANAGER	MANAGER COMMUNITY FACILITIES	DIRECTOR ASSETS		