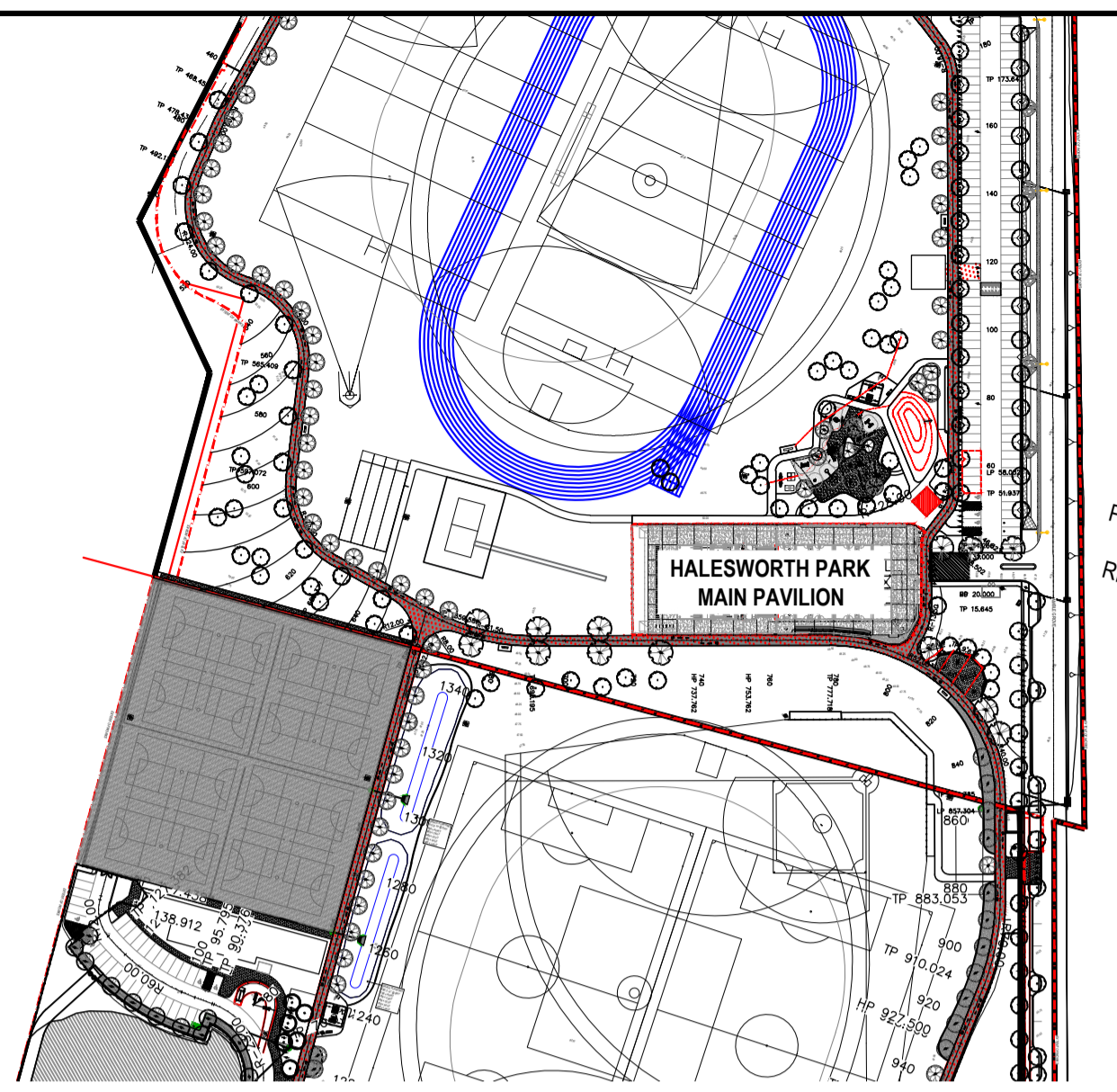


SITE PLAN
SCALE 1:500

CITY OF WANNEROO TEMPORARY TRANSPORTABLE PUBLIC AMENITIES. CONTRACTOR TO ALLOW REMOVAL & RELOCATION TO CITY'S REQUIREMENTS & LOCATION. CITY TO CONFIRM REMOVAL & RELOCATION REQUIREMENTS. CONTRACTOR TO ENSURE ALL SERVICES ARE TO BE TERMINATED & CAPPED OFF TO SERVICES CONSULTANTS' REQUIREMENTS.

5 EXISTING CAR PARKING BAYS NOMINATED FOR CONTRACTOR'S USE.



LOCATION PLAN
SCALE 1:2000

NOTE - CONTRACTOR TO CHECK & VERIFY ALL DIMENSIONS, LEVELS, & ANGLES ON SITE BEFORE COMMENCING. ALL CONSTRUCTION WORK TO BE IN ACCORDANCE WITH THE NATIONAL CONSTRUCTION CODE OF AUSTRALIA, APPROVED DOCUMENTS & RELEVANT AUSTRALIAN STANDARDS.

GENERAL NOTES

- ALL SERVICES & STRUCTURAL INFORMATION SHOWN ON ARCHITECTURAL DRAWINGS ARE INDICATIVE ONLY. REFER TO CONSULTANT DRAWINGS FOR SERVICES & STRUCTURAL REQUIREMENTS.
- ALL BUILDING INSULATION R-VALUE PERFORMANCES, AS A MINIMUM, IS TO ACHIEVE REQUIREMENTS AS OUTLINED IN THE ENERGY ASSESSMENT REPORT. INSTALLATION OF INSULATION IS TO COMPLY WITH MANUFACTURER & NCC REQUIREMENTS.
- 1. CONTRACTOR TO PROTECT EXISTING LANDSCAPING, FOOTPATHS, PARK FURNITURE, STRUCTURES & CARPARK FROM DAMAGE DURING CONSTRUCTION.
- 2. CONTRACTOR TO ALLOW FOR REINSTATEMENT & REMEDIATION OF EXISTING LANDSCAPING, FOOTPATHS PARK FURNITURE, STRUCTURES & CARPARK DAMAGED BY CONSTRUCTION WORKS. CONTRACTOR TO ENSURE SITE IS SURVEYED PRIOR TO CONSTRUCTION. NOTIFY SUPERINTENDENT'S REPRESENTATIVE OF ANY DISCREPANCIES.

NOTE A

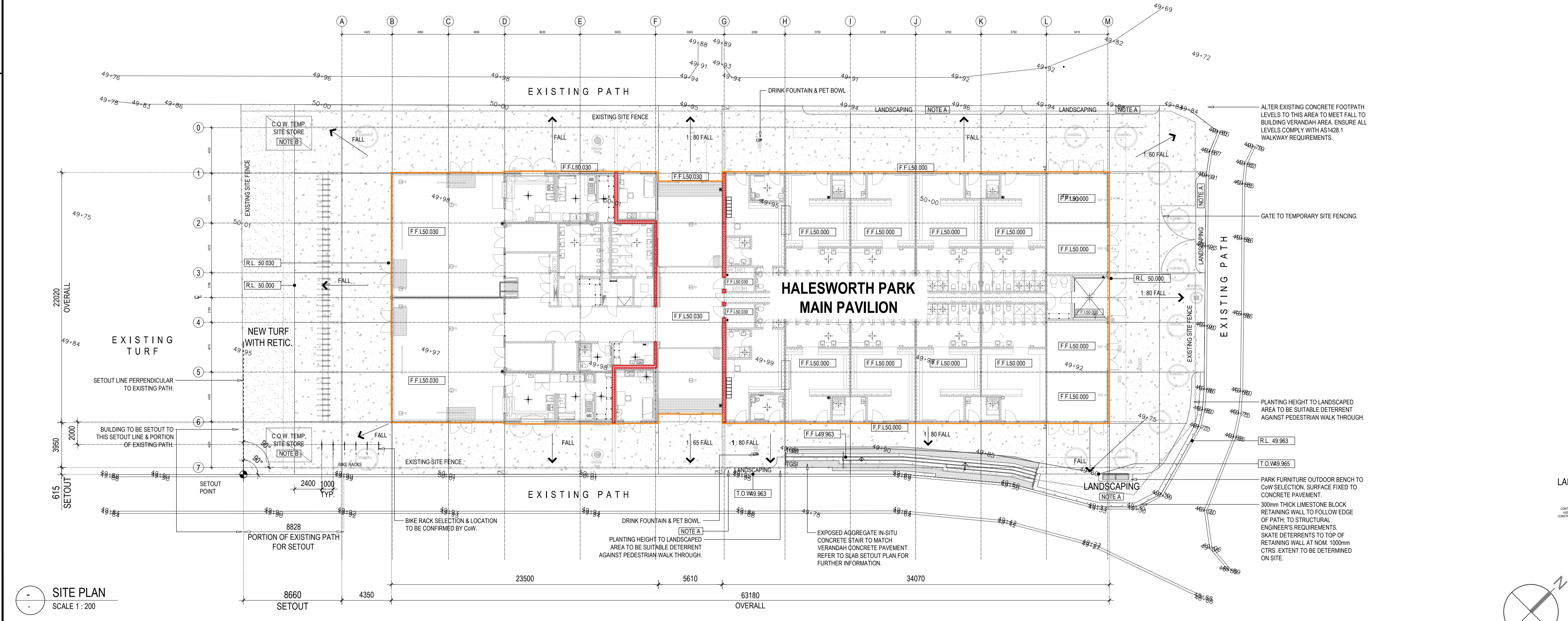
ALL LANDSCAPING TO BE BY CITY OF WANNEROO. CONTRACTOR TO SUPPLY & INSTALL RETICULATION SERVICES TO CITY'S SPECIFICATION & REQUIREMENT.

NOTE B

CITY OF WANNEROO TEMPORARY SITE STORAGE SHED. BUILDER TO ALLOW FOR REMOVAL. CITY TO CONFIRM REMOVAL REQUIREMENTS. MAKE GOOD TO SITE AFTER REMOVAL OF SITE SHED. TERMINATE & CAP ALL SERVICES TO SERVICES CONSULTANTS' REQUIREMENTS.

LEGEND

- EXISTING SITE FENCING BY CITY OF WANNEROO SHOWN INDICATIVELY. CONTRACTOR TO REQUEST PERMISSION FROM CITY FOR ANY SITE FENCING MODIFICATIONS. CONTRACTOR TO ALLOW FOR THE REMOVAL & RELOCATION OF FENCING. CITY TO CONFIRM REQUIREMENTS OF FENCING MODIFICATIONS, REMOVAL & RELOCATION.
- CO INDICATIVE PLUMBING CLEANOUT.
- C COMMUNICATION SERVICE PIT.
- VB PLUMBING VALVE BOX.
- DG DISCONNECTOR GULLY.



SITE PLAN
SCALE 1:200

ALTER EXISTING CONCRETE FOOTPATH LEVELS TO THIS AREA TO MEET FALL TO BUILDING VERANDAH AREA. ENSURE ALL LEVELS COMPLY WITH AS1428.1 WALKWAY REQUIREMENTS.

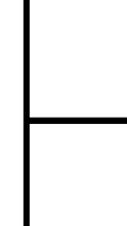
GATE TO TEMPORARY SITE FENCING.

PLANTING HEIGHT TO LANDSCAPED AREA TO BE SUITABLE DETERRENT AGAINST PEDESTRIAN WALK THROUGH.

PARK FURNITURE OUTDOOR BENCH TO COW SELECTION. SURFACE FIXED TO CONCRETE PAVEMENT.

300mm THICK LIMESTONE BLOCK RETAINING WALL TO FOLLOW EDGE OF PATH. TO STRUCTURAL ENGINEER'S REQUIREMENTS.

SKATE DETERRENTS TO TOP OF RETAINING WALL AT NOM. 100mm CTRS. EXTENT TO BE DETERMINED ON SITE.



CONSTRUCTION
CITY OF WANNEROO
ASSETS

b.g.
BOLLIG DESIGN GROUP
Level 1, 1200 King Street, West Perth 6005
PO Box 1224, West Perth 6012
E. bollig@bdlg.com.au W. bollig.com.au

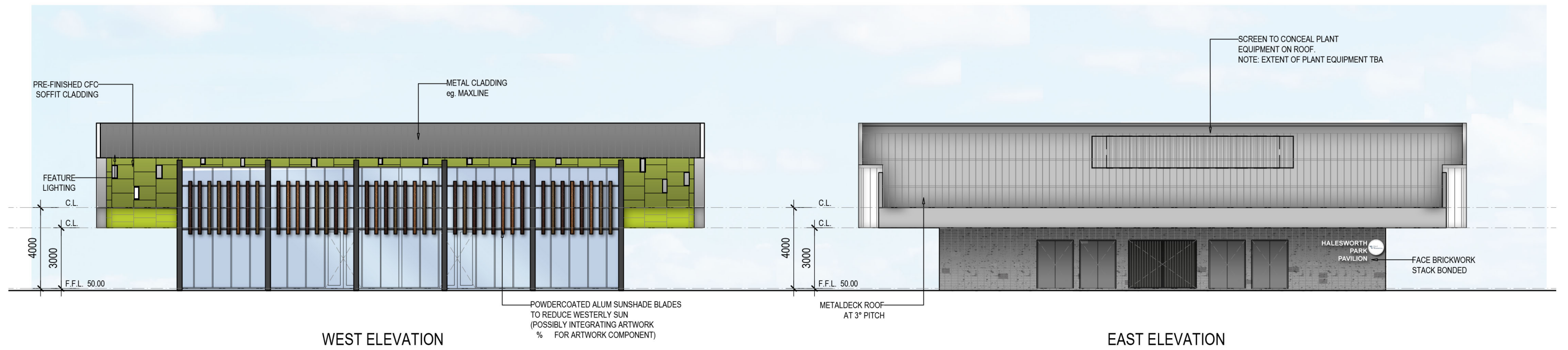
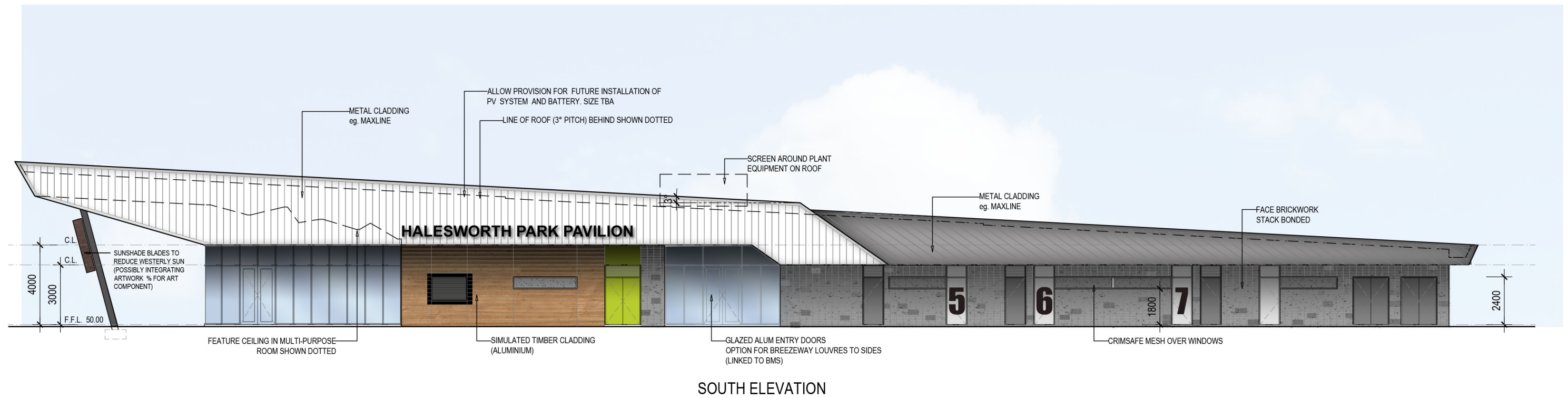
HALESWORTH PARK MAIN PAVILION
SPORTS AMENITIES BUILDING
24 HALESWORTH ROAD,
BUTLER 6036

LOCATION & SITE PLAN
SHEET 1 OF 1

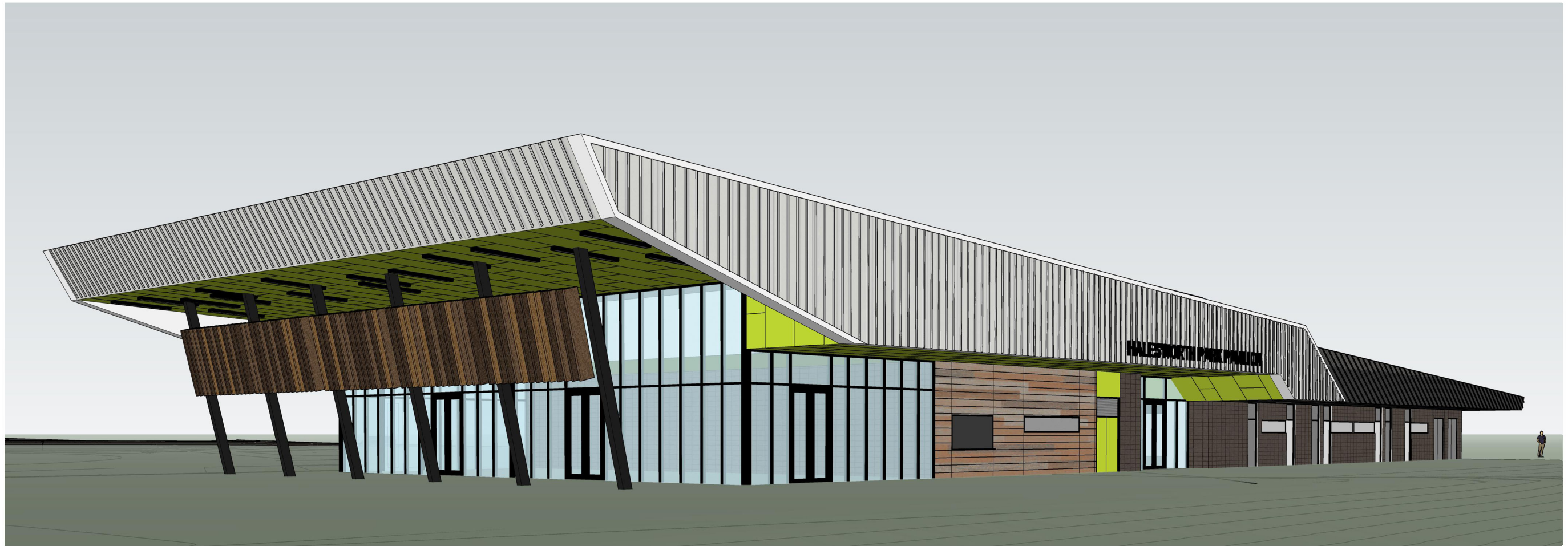
NO.	REVISION	BY	DATE	AUTH	NO.	REVISION	BY	DATE	AUTH	NO.
0	ISSUED FOR TENDER	BDC	30/06/22							
1	ISSUED FOR CONSTRUCTION	BDC	06/04/23							

SCALE: 2000 0 2000 4000 6000 8000 10000	1:200	SCALE IN MILLIMETRES	DATE: LOCAL	GRID: LOCAL	DRAWN: BOLLIG DESIGN GROUP	SPONSOR: MANAGER INFRASTRUCTURE CAPITAL WORKS	APPROVED: DIRECTOR ASSETS	FINANCE CODE: PR-2955	PMD No: 16061	DRAWING No: 3959-100-1	SHEET: A1	REVISION: 1 OF 1	ORIGINAL DRG. SIZE: A1
---	-------	----------------------	-------------	-------------	----------------------------	---	---------------------------	-----------------------	---------------	------------------------	-----------	------------------	------------------------

3959-100-1 **A1**



PRELIMINARY



VIEW FROM SOUTH WEST



VIEW FROM SOUTH EAST

PRELIMINARY



VIEW FROM NORTH WEST



VIEW FROM NORTH EAST

PRELIMINARY