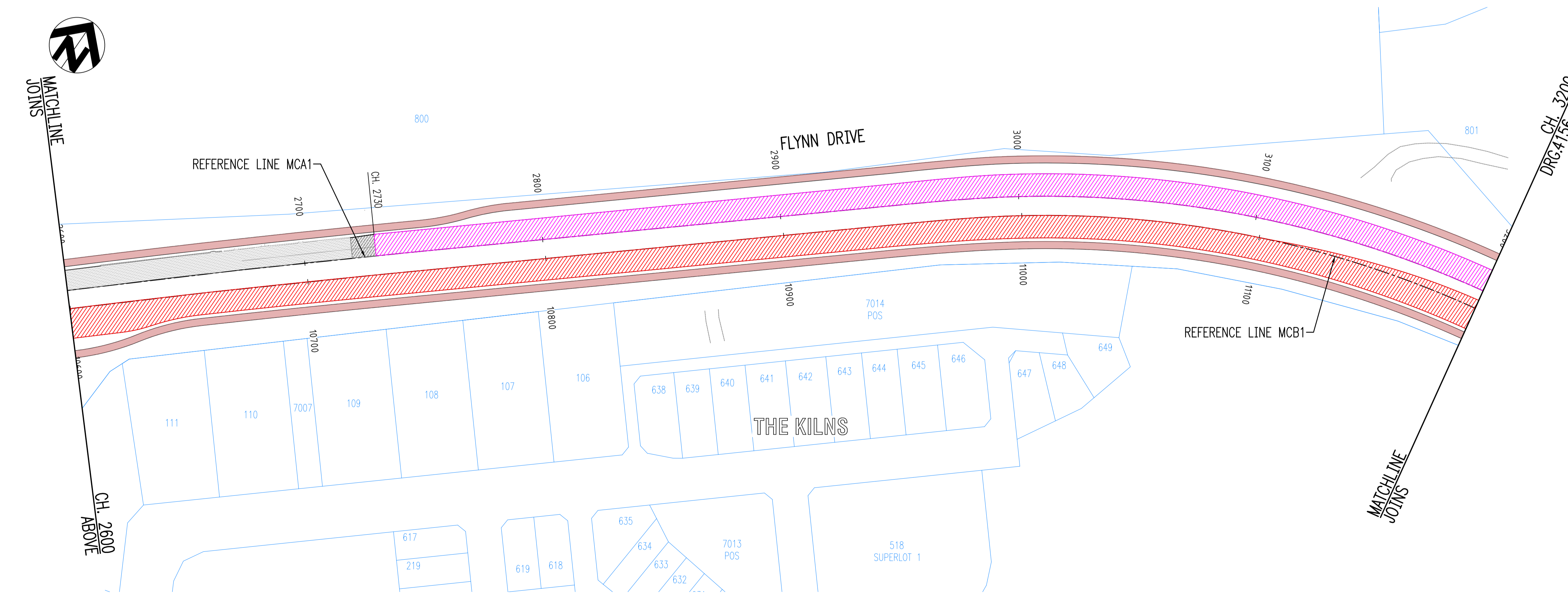


PLAN
SCALE 1:1000

- LEGEND**
- EXISTING PAVEMENT TO BE RETAINED
 - PAVEMENT TYPE 1
 - 30mm ASPHALTIC CONCRETE (10mm DGA A15E PMB)
 - TACK COAT (FULL WIDTH)
 - 100mm EMULSION STABILISED LIMESTONE BASECOURSE
 - 250mm LIMESTONE SUBBASE
 - PAVEMENT TYPE 2 (INTERSECTION MIX)
 - 40mm ASPHALTIC CONCRETE (INTERSECTION MIX A15E PMB)
 - TACK COAT (FULL WIDTH)
 - 100mm EMULSION STABILISED LIMESTONE BASECOURSE
 - 250mm LIMESTONE SUBBASE
 - PAVEMENT TYPE 3
 - 30mm ASPHALTIC CONCRETE (10mm DGA A15E PMB)
 - TACK COAT
 - 100mm EMULSION STABILISED LIMESTONE BASECOURSE
 - 225mm LIMESTONE SUBBASE
 - PAVEMENT TYPE 4
 - 30mm ASPHALTIC CONCRETE (10mm OGA A20E PMB)
 - 30mm ASPHALTIC CONCRETE (10mm DGA A15E PMB)
 - TACK COAT
 - 100mm EMULSION STABILISED LIMESTONE BASECOURSE
 - 250mm LIMESTONE SUBBASE
 - BRICK PAVING
 - 45° HERRINGBONE
 - COLOUR - 'FEDERATION RED'
 - SHARED PATH
 - 25mm THICK 7mm NOMINAL SIZE DENSE GRADED LATERITE RED ASPHALT (2% RED OXIDE)
 - TACK COAT
 - 150mm CRUSHED LIMESTONE
 - PAVEMENT BLEND AREA



PLAN
SCALE 1:1000

DESIGNED: (NAME) R. WILSON CONSULTANT: (COMPANY)	CHECKED: (NAME) A. ABABA CONSULTANT: (COMPANY)
DRAWN: (NAME) R. WILSON CONSULTANT: (COMPANY)	APPROVED: (NAME) A. THOMSON CONSULTANT: (COMPANY)

COPYRIGHT
The concepts and information contained in this document are the Copyright of Cossill & Webley Pty Ltd. Use or copying of the document in whole or part without the written permission of Cossill & Webley Pty Ltd constitutes an infringement of copyright.

Cossill & Webley
CONSULTING ENGINEERS

Mailing Address: PO Box 680, Subiaco WA 6904
Street Address: B12 (Level 2) 431 Roberts Road, Subiaco WA 6008
T (08) 9422 5800 F (08) 9422 5801 E admin@cosweb.com.au

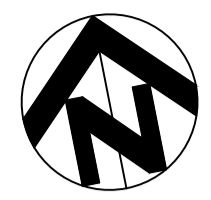
CITY OF WANNEROO
INFRASTRUCTURE

FLYNN DRIVE DUPLICATION
INTERIM ALIGNMENT
NEERABUP

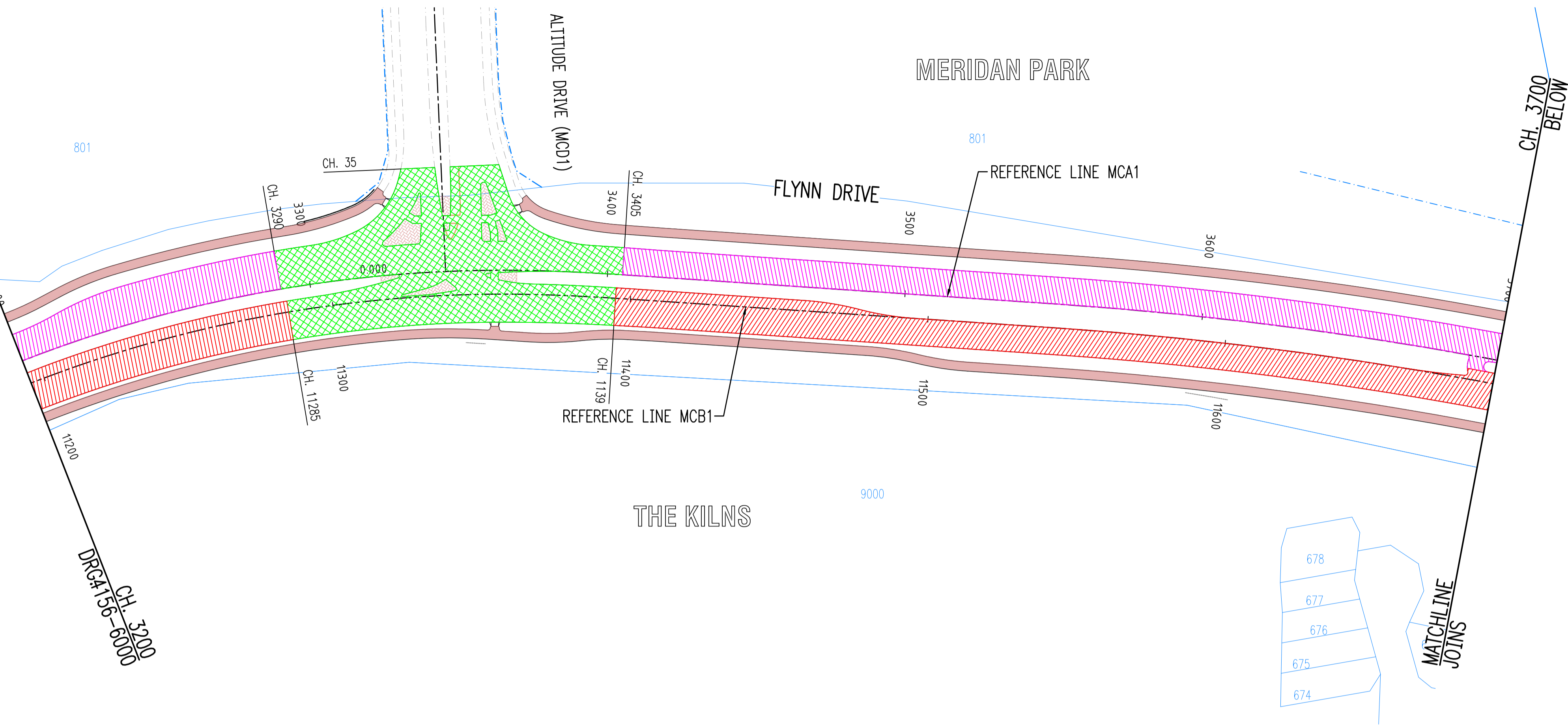
PAVEMENT PLAN
FLYNN DRIVE (MCA1) - START TO CH. 3200.000

No.	REVISION	BY	DATE	AUTH	No.	REVISION	BY	DATE	AUTH	SCALE: 1:1000	SURVEYED: DENADA SURVEYOR	DRAWN: CIVIL DESIGNER	AUTHORISED: MANAGER INFRASTRUCTURE CAPITAL WORKS	FINANCE CODE: PR-4347	FWD No.: 21060
1	ISSUED FOR TENDER	RW	22/12/22	AT						1:1000	DESIGNED: CIVIL DESIGNER	CHECKED: SENIOR PROJECT MANAGER	APPROVED: DIRECTOR ASSETS	00/0000	42656
2A	ISSUED FOR TENDER ADDENDUM	RW	15/02/23	AT						AHD	PCC94			00/0000	42656

DRAWING No. SHEET REVISION ORIGINAL DRG. SIZE
4156-6000-TA A1

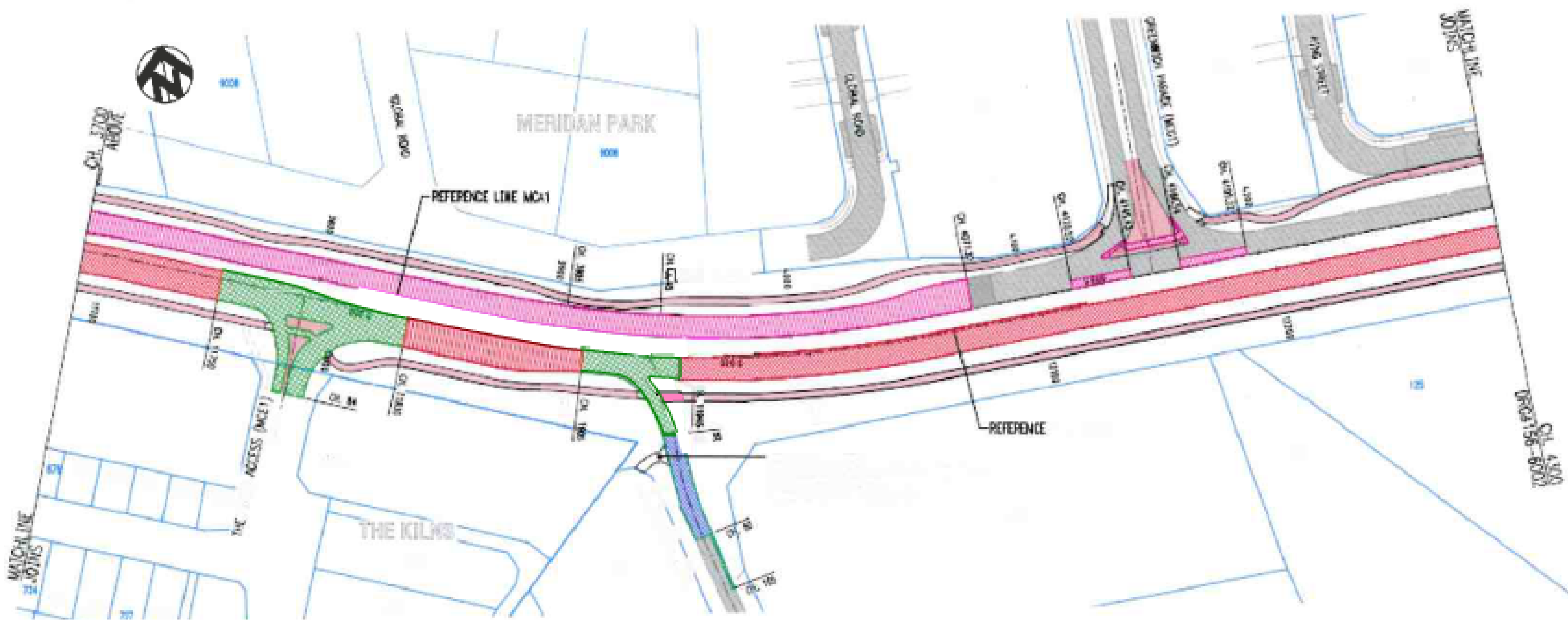


MATCHLINE JOINS



LEGEND

- EXISTING PAVEMENT TO BE RETAINED
- PAVEMENT TYPE 1
 - 30mm ASPHALTIC CONCRETE (10mm DGA A15E PMB)
 - TACK COAT (FULL WIDTH)
 - 100mm EMULSION STABILISED LIMESTONE BASECOURSE
 - 250mm LIMESTONE SUBBASE
- PAVEMENT TYPE 2 (INTERSECTION MIX)
 - 40mm ASPHALTIC CONCRETE (INTERSECTION MIX A15E PMB)
 - TACK COAT (FULL WIDTH)
 - 100mm EMULSION STABILISED LIMESTONE BASECOURSE
 - 250mm LIMESTONE SUBBASE
- PAVEMENT TYPE 3
 - 30mm ASPHALTIC CONCRETE (10mm DGA A15E PMB)
 - TACK COAT
 - 100mm EMULSION STABILISED LIMESTONE BASECOURSE
 - 225mm LIMESTONE SUBBASE
- PAVEMENT TYPE 4
 - 30mm ASPHALTIC CONCRETE (10mm OGA A20E PMB)
 - 30mm ASPHALTIC CONCRETE (10mm DGA A15E PMB)
 - TACK COAT
 - 100mm EMULSION STABILISED LIMESTONE BASECOURSE
 - 250mm LIMESTONE SUBBASE
- BRICK PAVING
 - 45° HERRINGBONE
 - COLOUR - 'FEDERATION RED'
- SHARED PATH
 - 25mm THICK 7mm NOMINAL SIZE DENSE GRADED LATERITE RED ASPHALT (2% RED OXIDE)
 - TACK COAT
 - 150mm CRUSHED LIMESTONE
- PAVEMENT BLEND AREA



DESIGNED (NAME) <i>R. WILSON</i> CONSULTANT (COMPANY)	CHECKED (NAME) <i>A. ABABA</i> CONSULTANT (COMPANY)
DRAWING (NAME) <i>R. WILSON</i> CONSULTANT (COMPANY)	APPROVED (NAME) <i>A. THOMSON</i> CONSULTANT (COMPANY)

COPYRIGHT
 The concepts and information contained in this document are the Copyright of Cossill & Webley Pty Ltd. Use or copying of the document in whole or part without the written permission of Cossill & Webley Pty Ltd constitutes an infringement of copyright.

Cossill & Webley
CONSULTING ENGINEERS

Mailing Address
 PO Box 680
 Subiaco WA 6904

Street Address
 B12 (Level 2) 431 Roberts Road
 Subiaco WA 6908

T (08) 9422 5800 F (08) 9422 5801 E admin@cosweb.com.au

CITY OF WANNEROO
INFRASTRUCTURE

FLYNN DRIVE DUPLICATION
 INTERIM ALIGNMENT
 NEERABUP

PAVEMENT PLAN
 FLYNN DRIVE (MCA1) - CH. 3200.000 TO CH. 4300.000

No.	REVISION	BY	DATE	AUTH	No.	REVISION	BY	DATE	AUTH	No.
1	ISSUED FOR TENDER	RW	22/12/22	AT						
2A	ISSUED FOR TENDER ADDENDUM	RW	15/02/23	AT						

SCALE: 1:1000

DATUM: AHD GRID: PCC94

SURVEYED: DENADA SURVEYOR 2022

DESIGNED: CIVIL DESIGNER

CHECKED: SENIOR PROJECT MANAGER

DRAWN: CIVIL DESIGNER

AUTHORISED: INFRASTRUCTURE CAPITAL WORKS

APPROVED: DIRECTOR ASSETS

FINANCE CODE: PR-4347

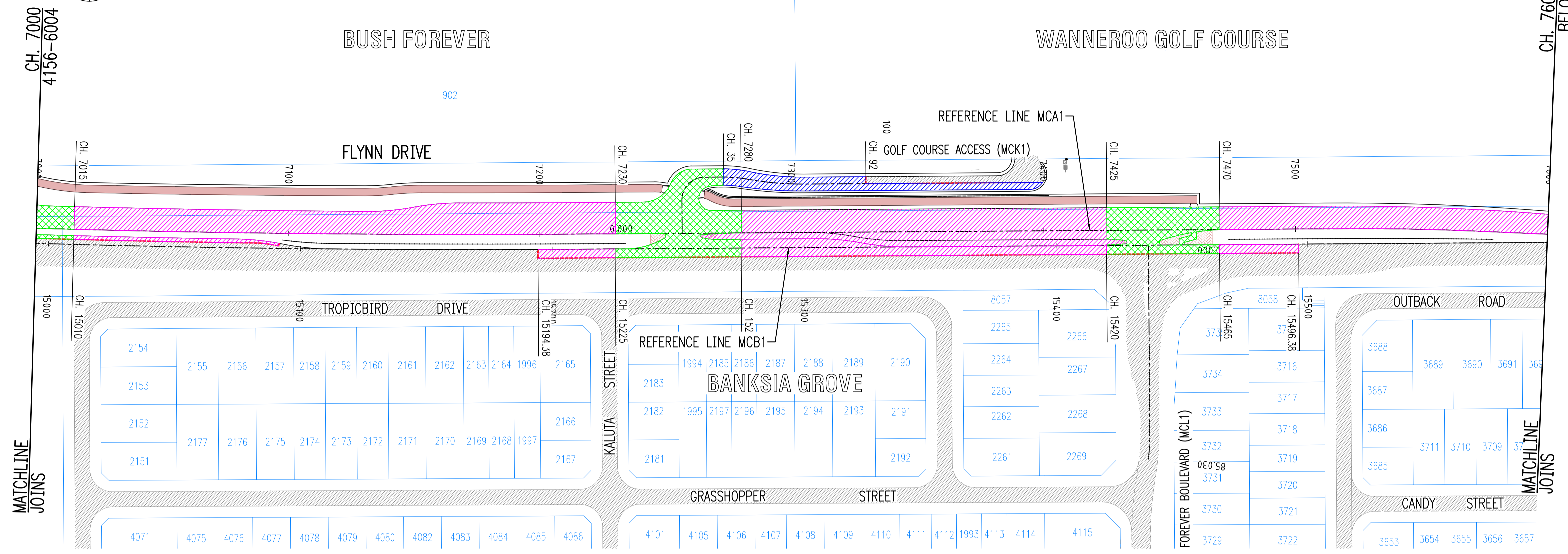
DRAWING SET REF: 00/00000

PMO No.: 21060

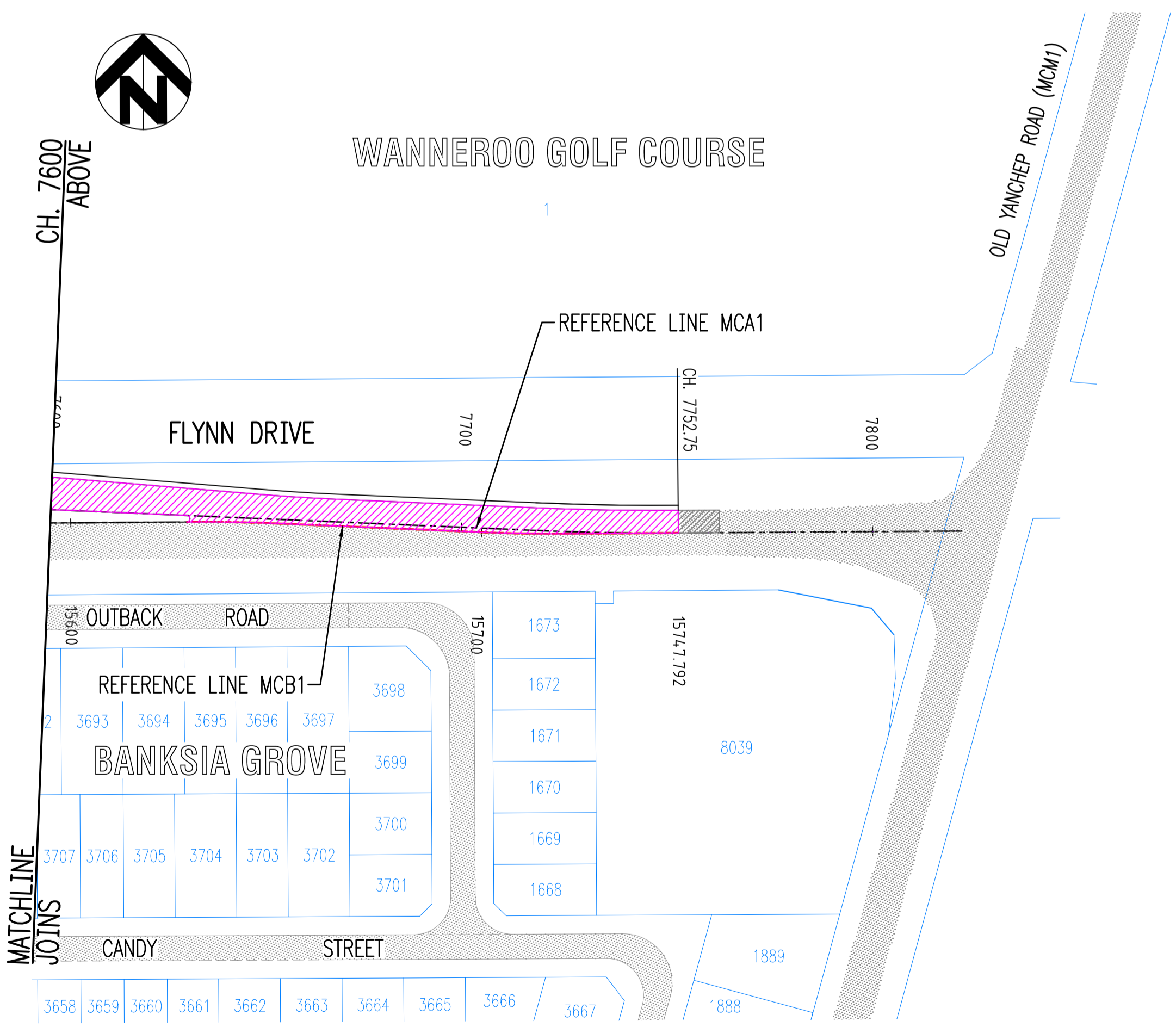
PMO CONTAINER No.: 42656

4156-6001-TA

A1



LEGEND	
	EXISTING PAVEMENT TO BE RETAINED
	PAVEMENT TYPE 1 30mm ASPHALTIC CONCRETE (10mm NOMINAL DGA) TACK COAT (FULL WIDTH) 100mm EMULSION STABILIZED LIMESTONE 250mm LIMESTONE SUBBASE
	PAVEMENT TYPE 2 (INTERSECTION MIX) 40mm ASPHALTIC CONCRETE (14mm NOMINAL DGA) TACK COAT (FULL WIDTH) 100mm EMULSION STABILIZED LIMESTONE 250mm LIMESTONE SUBBASE
	PAVEMENT TYPE 3 30mm ASPHALTIC CONCRETE TACK COAT 100mm EMULSION STABILIZED LIMESTONE 225mm LIMESTONE SUBBASE
	BRICK PAVING 45° HERRINGBONE COLOUR - 'FEDERATION RED'
	SHARED PATH 25mm THICK 7mm NOMINAL SIZE DENSE GRADED LATERITE RED ASPHALT (2% RED OXIDE) TACK COAT 150mm CRUSHED LIMESTONE
	PAVEMENT BLEND AREA



DESIGNED: (NAME) R. WILSON CONSULTANT: (COMPANY)	CHECKED: (NAME) A. ABABA CONSULTANT: (COMPANY)
DRAWN: (NAME) R. WILSON CONSULTANT: (COMPANY)	APPROVED: (NAME) A. THOMSON CONSULTANT: (COMPANY)

CW Cossill & Webley
CONSULTING ENGINEERS

Copyright
The concepts and information contained in this document are the Copyright of Cossill & Webley Pty Ltd. Use or copying of the document in whole or part without the written permission of Cossill & Webley Pty Ltd constitutes an infringement of copyright.

Mailing Address
PO Box 690
Subiaco WA 6904

Street Address
B12 (Level 2) 431 Roberts Road
Subiaco WA 6008

T (08) 9422 5800 F (08) 9422 5801 E admin@cosweb.com.au

CITY OF WANNEROO
INFRASTRUCTURE

FLYNN DRIVE DUPLICATION
INTERIM ALIGNMENT

NEERABUP

PAVEMENT PLAN
FLYNN DRIVE (MCA1) - CH. 7000.000 TO END

DRAWING No. SHEET REVISION ORIGINAL DRG. SIZE

4156-6005-A A1

No.	REVISION	BY	DATE	AUTH	No.	REVISION	BY	DATE	AUTH	SCALE:	SURVEYED:	DRAWN:	AUTHORISED:	FINANCE CODE	PMO No.
A	ISSUED FOR 100% DESIGN REVIEW	R.W.	09.05.22							1:1000	DEVNADA		MANAGER INFRASTRUCTURE CAPITAL WORKS	PR-4347	21060
													APPROVED:	DRAWING SET REF	PMO CONTAINER No.
													APPROVED:	00/00000	42656