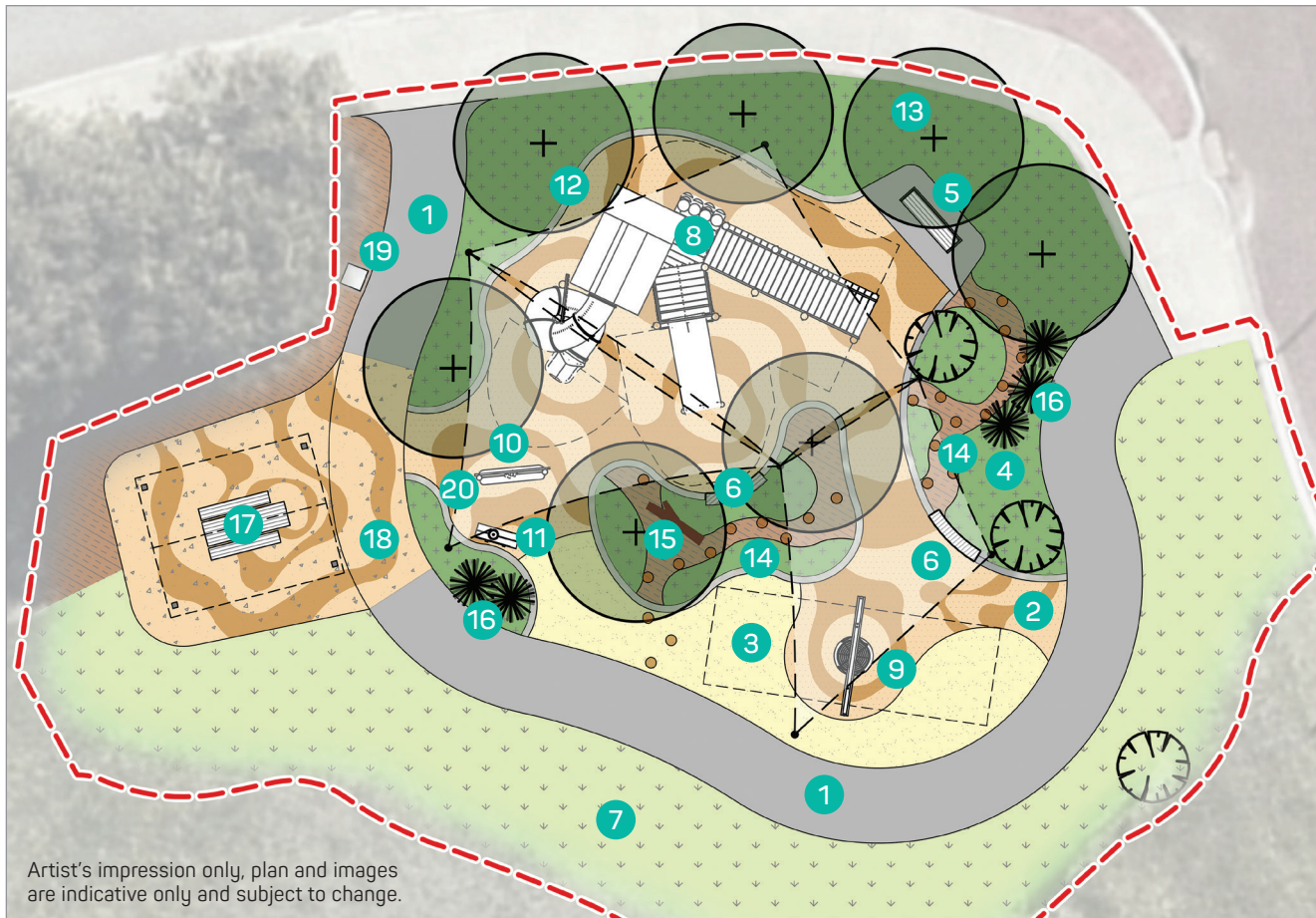


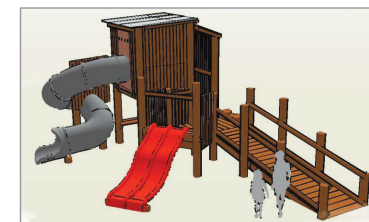
CAMIRA PARK

Construction notification

New playground equipment will be installed at this park from early February 2025.



- | | |
|-----------------------------------|--------------------------------|
| 1 Concrete Path | 11 Kitchen Interactive Play |
| 2 Rubber Softfall with Patterning | 12 Concrete Kerb Edging |
| 3 Sand Softfall | 13 Proposed Trees |
| 4 Feature Garden Bed | 14 Log Steppers |
| 5 Seat with Arm Rest | 15 Balance Logs |
| 6 Limestone Seating Wall | 16 Grasstree Transplants |
| 7 Turfed Area to match existing | 17 Picnic Setting and Shelter |
| 8 Combination Unit | 18 Coloured Concrete Hardstand |
| 9 Steel Basket Swing | 19 Relocated Bin Location |
| 10 Shopfront Play | 20 Shade Sails |



Nature Play Combination Unit.



Nature Play Logs and Steppers.



For details and updates, visit our website wanneroo.wa.gov.au

